

United States Department of the Interior
National Park Service

National Register of Historic Places
Registration Form

This form is for use in nominating or requesting determinations for individual properties and districts. See instructions in *How to Complete the National Register of Historic Places Registration Form* (National Register Bulletin 16A). Complete each item by marking "x" in the appropriate box or by entering the information requested. If any item does not apply to the property being documented, enter "N/A" for "not applicable." For functions, architectural classification, materials, and areas of significance, enter only categories and subcategories from the instructions. Place additional entries and narrative items on continuation sheets (NPS Form 10-900a). Use a typewriter, word processor, or computer, to complete all items.

1. Name of Property

historic name Chambers Park Log Cabin

other names CAR-288

2. Location


street & number Chambers Park, Liberty Road not for publication

city or town Federalsburg vicinity

state Maryland code MD county Caroline code 011 zip code 21532

3. State/Federal Agency Certification

As the designated authority under the National Historic Preservation Act of 1966, as amended, I hereby certify that this nomination request for determination of eligibility meets the documentation standards for registering properties in the National Register of Historic Places and meets the procedural and professional requirements set forth in 36 CFR Part 60. In my opinion, the property meets does not meet the National Register criteria. I recommend that this property be considered significant nationally statewide locally. (See continuation sheet for additional comments).

 Director/SHPO 5.10.16
Signature of certifying official/Title Date

Maryland Historical Trust
State or Federal agency and bureau

In my opinion, the property meets does not meet the National Register criteria. (See continuation sheet for additional comments).

Signature of certifying official/Title Date

State or Federal agency and bureau

4. National Park Service Certification

I hereby, certify that this property is:

- entered in the National Register.
 See continuation sheet.
- determined eligible for the National Register.
 See continuation sheet.
- Determined not eligible for the National Register.
- removed from the National Register.
- other (explain): _____

Signature of the Keeper

Date of Action

Chambers Park Log Cabin (CAR-288)
Name of Property

Caroline County, MD
County and State

5. Classification

Ownership of Property
(Check as many boxes as apply)

Category of Property
(Check only one box)

Number of Resources within Property
(Do not include previously listed resources in the count)

- private
- public-local
- public-State
- public-Federal

- building(s)
- district
- site
- structure
- object

Contributing	Noncontributing	
1		buildings
		sites
		structures
		objects
1	0	Total

Name of related multiple property listing
(Enter "N/A" if property is not part of a multiple property listing)

number of contributing resources previously listed in the National Register

N/A

0

6. Function or Use

Historic Functions
(Enter categories from instructions)

Current Functions
(Enter categories from instructions)

Recreation and Culture: outdoor recreation

Social: meeting hall

Vacant – not in use

7. Description

Architectural Classification
(Enter categories from instructions)

Materials
(Enter categories from instructions)

No Style

foundation Concrete

walls Wood

roof Wood

other Stone

Narrative Description

(Describe the historic and current condition of the property on one or more continuation sheets)

8. Statement of Significance

Applicable National Register Criteria

(Mark "x" in one or more boxes for the criteria qualifying the property for National Register listing)

- A** Property is associated with events that have made a significant contribution to the broad pattern of our history.
- B** Property associated with the lives of persons significant in our past.
- C** Property embodies the distinctive characteristics of a type, period, or method of construction or represents the work of a master, or possesses high artistic values, or represents a significant and distinguishable entity whose components lack individual distinction.
- D** Property has yielded, or is likely to yield, information important in prehistory or history.

Criteria Considerations

(Mark "x" in all the boxes that apply)

Property is:

- A** owned by a religious institution or used for religious purposes.
- B** removed from its original location.
- C** a birthplace or grave.
- D** a cemetery.
- E** a reconstructed building, object, or structure.
- F** a commemorative property.
- G** less than 50 years of age or achieved significance within the past 50 years.

Narrative Statement of Significance

(Explain the significance of the property on one or more continuation sheets)

Area of Significance

(Enter categories from instructions)

Politics/Government
 Architecture

Period of Significance

1937

Significant Dates

1937

Significant Person

(Complete if Criterion B is marked above)

Cultural Affiliation

N/A

Architect/Builder

S. R. Preston, architect

9. Major Bibliographical References

Bibliography

(Cite the books, articles, and other sources used in preparing this form on one or more continuation sheets)

Previous documentation on files (NPS):

- preliminary determination of individual listing (36 CFR 67) has been requested
- previously listed in the National Register
- previously determined eligible by the National Register
- designated a National Historic Landmark
- recorded by Historic American Buildings Survey # _____
- recorded by Historic American Engineering Record # _____

Primary location of additional data:

- State Historic Preservation Office
- Other State agency
- Federal agency
- Local government
- University
- Other

Name of repository:

United States Department of the Interior
National Park Service

National Register of Historic Places Continuation Sheet

CAR-288
Chambers Park Log Cabin

Name of Property

Caroline County, MD

County and State

Section 7 Page 1

Description Summary:

The Chambers Park Log Cabin is a one-story log building located in Chambers Park, Federalsburg, Maryland that was constructed in 1937 under the auspices of the National Youth Administration.

General Description:

The Chambers Park Log Cabin is a one-story gable-roofed building constructed in 1937 of round cypress logs saddle-notched at the corners. The north façade faces Liberty Road, and comprises a central entrance door of wood battens flanked on either side by a 6/6 sash window. The slope of the gable roof extends to form a small hood over the entrance. The east and west gable ends are marked by paired six-light casement windows. All windows are fitted with batten shutters. The rectangular building measures 24 by 36 feet and contains a single room, with logs exposed as the interior finish. The roof framing, consisting of common rafters, is also exposed on the interior. Originally, a 14 by 14 shed-roofed log extension housing a brick chimney was centered on the rear elevation; this extension was removed ca. 1993 because of deterioration, and the present stone chimney was constructed in its place. The gable roof is covered with wood shingles. The building rests on a concrete foundation.

United States Department of the Interior
National Park Service

National Register of Historic Places Continuation Sheet

CAR-288
Chambers Park Log Cabin

Name of Property

Caroline County, MD

County and State

Section 8 Page 1

Summary Statement of Significance:

The Chambers Park Log Cabin is significant under Criterion A for its association with the construction programs of the New Deal in the 1930s. Built under the auspices of the National Youth Administration (NYA), the cabin provided work for local carpenters and laborers and resulted in a meeting place for youth. The cabin derives additional significance for its architecture, as a representative example of a type of structure associated with these programs. While several such cabins survive in parks in Central and Western Maryland, examples are especially rare in the Eastern Shore region. The Chambers Park Log Cabin was among the first of its type constructed as a NYA project, and provided a model for at least two similar projects elsewhere in the region.

Resource History and Historic Context:

The log cabin was designed by local architect S. R. Preston. As many as nineteen young carpenters and laborers were employed in its construction in 1937. Boy Scouts assisted with concrete work and caulking. The cypress logs were harvested in the Great Pocomoke Swamp. The building was provided with electricity, and a "wagon wheel" chandelier was made by industrial arts students at the Federalsburg high school to light the main room. The total cost of construction was \$1,431, of which Federal funds covered \$1,025.

The log cabin design was popular in parks associated with New Deal "alphabet" programs such as the Civilian Conservation Corps (CCC) in the 1930s.

The cabin is located in Chambers Park, an 18-acre municipal park located near Federalsburg's downtown business district. Thomas H. Chambers, Mayor of Federalsburg from 1915 to 1947, donated the land for the park in several parcels beginning in 1922. He also diverted his Mayoral salary to the town for park maintenance and development.

The log cabin in the park was a project of the National Youth Administration, which was part of President Roosevelt's New Deal program for stimulating the economy and ending the Great Depression. Another recovery program, the Works Progress Administration (WPA), developed the rest of Chambers Park and the lake.

In the 1930s, the concept of providing a recreational center for local youth was innovative on the Eastern Shore. The cabin, designated NYA park improvement project number 1536, was said to be the first project of its type in the nation. It served as a model for similar projects in Hurlock (Dorchester County) and Crisfield (Somerset County).

United States Department of the Interior
National Park Service

National Register of Historic Places Continuation Sheet

CAR-288
Chambers Park Log Cabin

Name of Property

Caroline County, MD

County and State

Section 8 Page 2

The cabin was dedicated on May 15, 1937. The dedication program for the Log Cabin NYA Youth Center stated, "It is hoped that all of the young people in this community will make full use of this building and see it as a meeting place where inspiration and character shall abound." It was intended to serve a wide variety of youth organizations, including Boy Scouts, Camp Fire Girls, Boy Cathedral Builders, Excelsior Girls Club, 4-H Clubs and Civic Clubs.

The cabin was used through the late 1960s for Scout meetings, church groups, family picnics, birthday parties and reunions and for a variety of community functions including firemen's carnivals, parades, and games. Use of the park declined in the 1970s and the cabin fell into disrepair. In the early 1990s the Town removed the rear extension, replaced the deteriorating brick chimney with a stone chimney, and installed a new wood shingle roof.

United States Department of the Interior
National Park Service

National Register of Historic Places Continuation Sheet

CAR-288
Chambers Park Log Cabin

Name of Property

Caroline County, MD

County and State

Section 9 Page 1

Major Bibliographical References:

“Pride in the Past, A Quarterly Newsletter of the Federalsburg Historical Society,” Vol. 5, No. 3, September 2007.

Baltimore Sun, July 25, 1938; August 23, 1938; December 5, 1938.

Laura D. Jefferson, “Federalsburg’s Youth Center,” Eastern Shore Magazine, July 1937, pp. 10-11.

United States Department of the Interior
National Park Service

National Register of Historic Places Continuation Sheet

CAR-288
Chambers Park Log Cabin

Name of Property

Caroline County, MD

County and State

Section 10 Page 1

Geographical Data

UTM References:

18-433527-4282975

Federalsburg, MD-DE Quad

Verbal Boundary Description:

The National Register boundary is defined as a rectangle extending 50' from the footprint of the cabin in all directions.

Boundary Justification:

The boundary comprises the cabin within its immediate historic setting.

United States Department of the Interior
National Park Service

National Register of Historic Places Continuation Sheet

CAR-288
Chambers Park Log Cabin

Name of Property

Caroline County, MD

County and State

Section PHOTO LOG Page 1

Index to Photographs

The following information applies to all photographs which accompany this documentation:

Maryland Inventory of Historic Properties (MIHP) Number: CAR-288

Name of Property: Chambers Park Log Cabin

Location: Caroline County, Maryland

Photographer: Peter Kurtze

Date taken: August 13, 2015

Location of original digital files [or negatives]: MD SHPO

Photo captions:

MD_CarolineCounty_ChambersParkLogCabin_0001.tif
North facade

MD_CarolineCounty_ChambersParkLogCabin_0002.tif
View from northwest

MD_CarolineCounty_ChambersParkLogCabin_0003.tif
View from southwest

MD_CarolineCounty_ChambersParkLogCabin_0004.tif
View from southeast

MD_CarolineCounty_ChambersParkLogCabin_0005.tif
View from northeast

MD_CarolineCounty_ChambersParkLogCabin_0006.tif
Interior, camera facing south

MD_CarolineCounty_ChambersParkLogCabin_0007.tif
Interior, camera facing southeast

MD_CarolineCounty_ChambersParkLogCabin_0008.tif
Interior, camera facing west

United States Department of the Interior
National Park Service

National Register of Historic Places Continuation Sheet

CAR-288
Chambers Park Log Cabin

Name of Property

Caroline County, MD

County and State

Section PHOTO LOG Page 2

MD_CarolineCounty_ChambersParkLogCabin_0009.tif
Interior, camera facing northwest

MD_CarolineCounty_ChambersParkLogCabin_0010.tif
Interior, camera facing southwest

United States Department of the Interior
National Park Service

National Register of Historic Places Continuation Sheet

CAR-288
Chambers Park Log Cabin

Name of Property

Caroline County, MD

County and State

Section PHOTOS Page 1



MD_CarolineCounty_ChambersParkLogCabin_0001

United States Department of the Interior
National Park Service

National Register of Historic Places Continuation Sheet

CAR-288
Chambers Park Log Cabin

Name of Property

Caroline County, MD

County and State

Section PHOTOS Page 2



MD_CarolineCounty_ChambersParkLogCabin_0002

United States Department of the Interior
National Park Service

National Register of Historic Places Continuation Sheet

CAR-288
Chambers Park Log Cabin
Name of Property

Section PHOTOS Page 3

Caroline County, MD
County and State



MD_CarolineCounty_ChambersParkLogCabin_0003

United States Department of the Interior
National Park Service

National Register of Historic Places Continuation Sheet

CAR-288
Chambers Park Log Cabin

Name of Property

Caroline County, MD

County and State

Section PHOTOS Page 4



MD_CarolineCounty_ChambersParkLogCabin_0004

United States Department of the Interior
National Park Service

National Register of Historic Places Continuation Sheet

CAR-288
Chambers Park Log Cabin

Name of Property

Caroline County, MD

County and State

Section PHOTOS Page 5



MD_CarolineCounty_ChambersParkLogCabin_0005

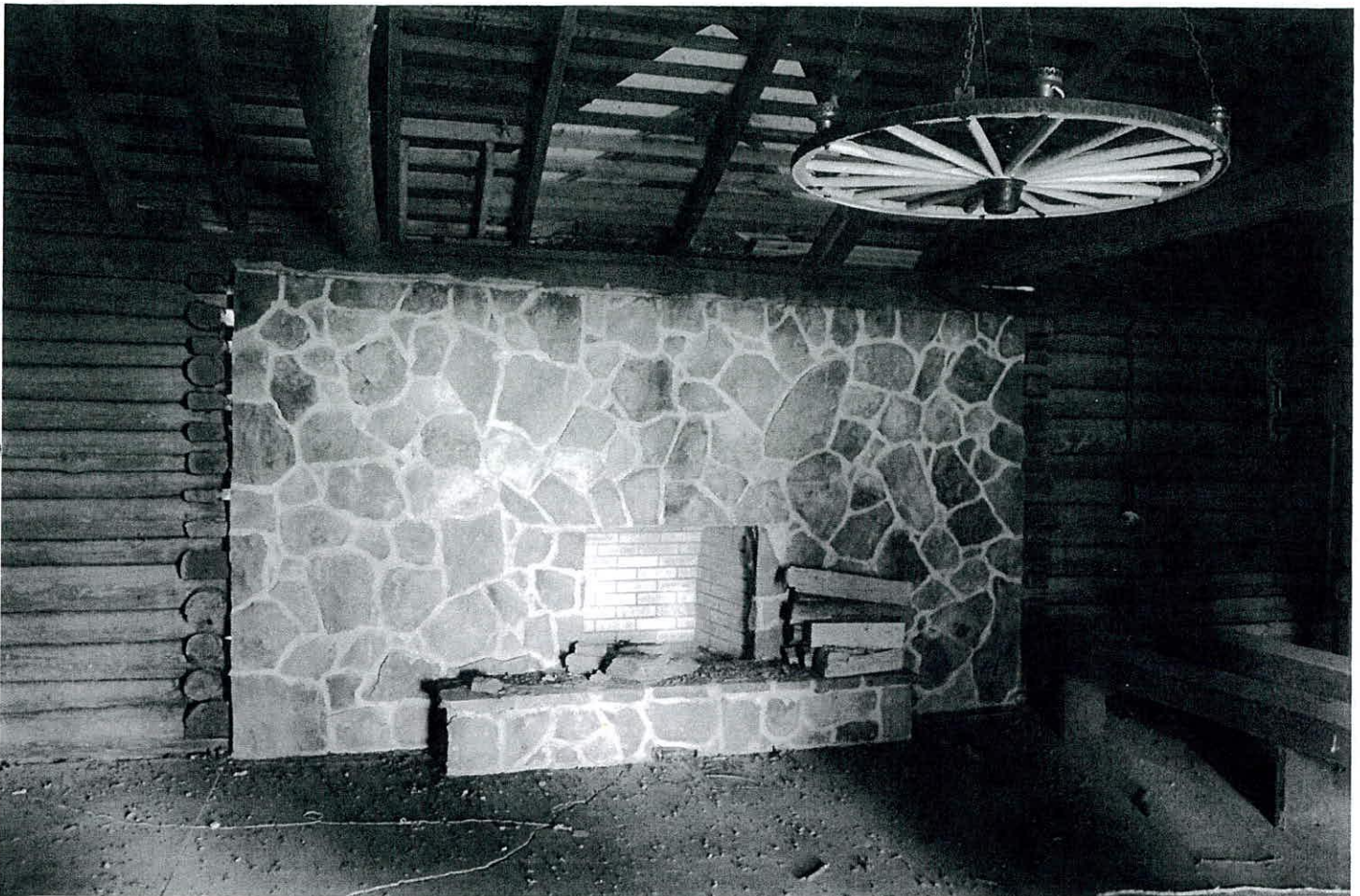
United States Department of the Interior
National Park Service

National Register of Historic Places Continuation Sheet

CAR-288
Chambers Park Log Cabin
Name of Property

Caroline County, MD
County and State

Section PHOTOS Page 6



MD_CarolineCounty_ChambersParkLogCabin_0006

United States Department of the Interior
National Park Service

National Register of Historic Places Continuation Sheet

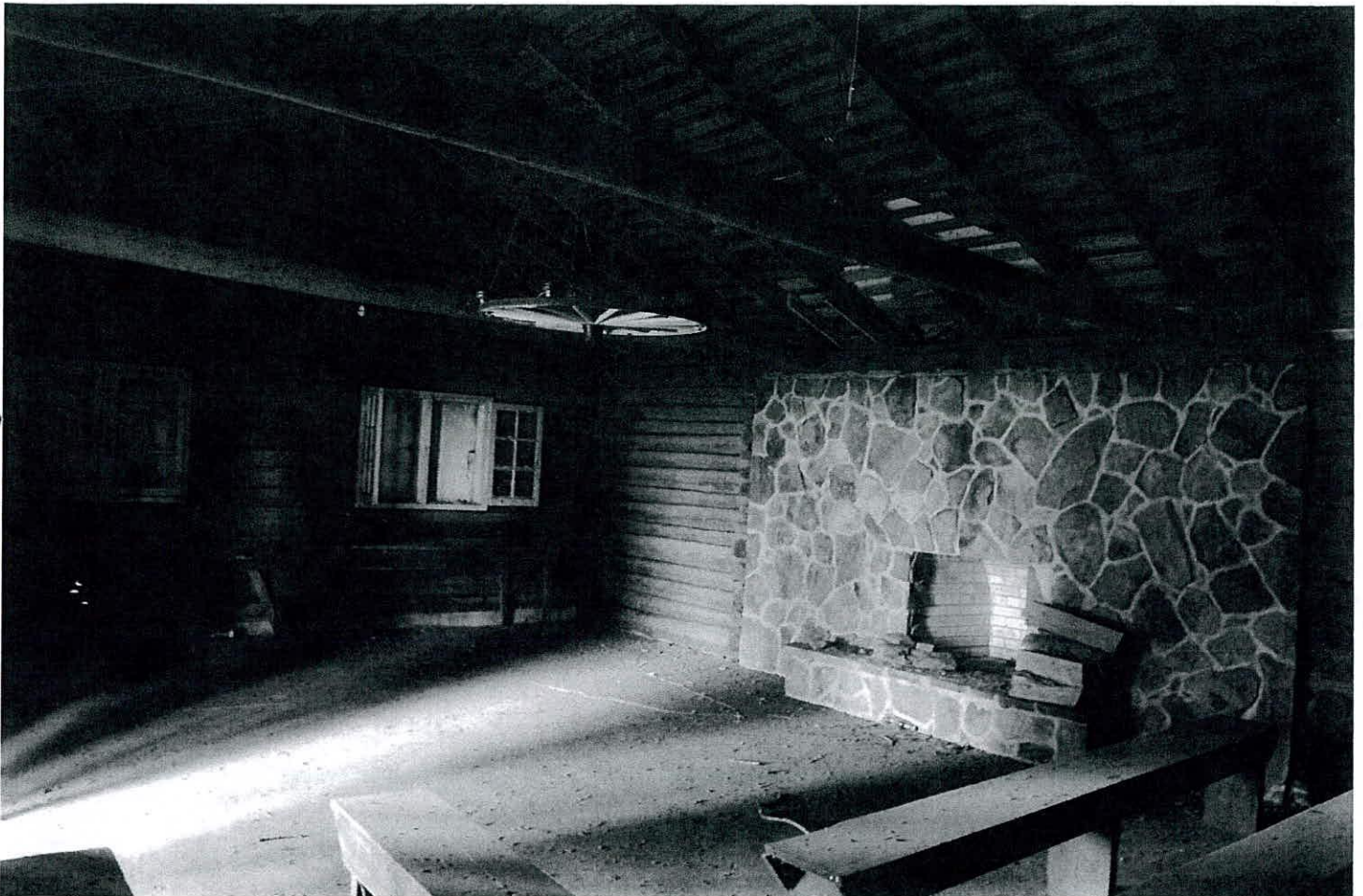
CAR-288
Chambers Park Log Cabin

Name of Property

Caroline County, MD

County and State

Section PHOTOS Page 7



MD_CarolineCounty_ChambersParkLogCabin_0007

United States Department of the Interior
National Park Service

National Register of Historic Places Continuation Sheet

CAR-288
Chambers Park Log Cabin
Name of Property

Caroline County, MD
County and State

Section PHOTOS Page 8



MD_CarolineCounty_ChambersParkLogCabin_0008

United States Department of the Interior
National Park Service

National Register of Historic Places Continuation Sheet

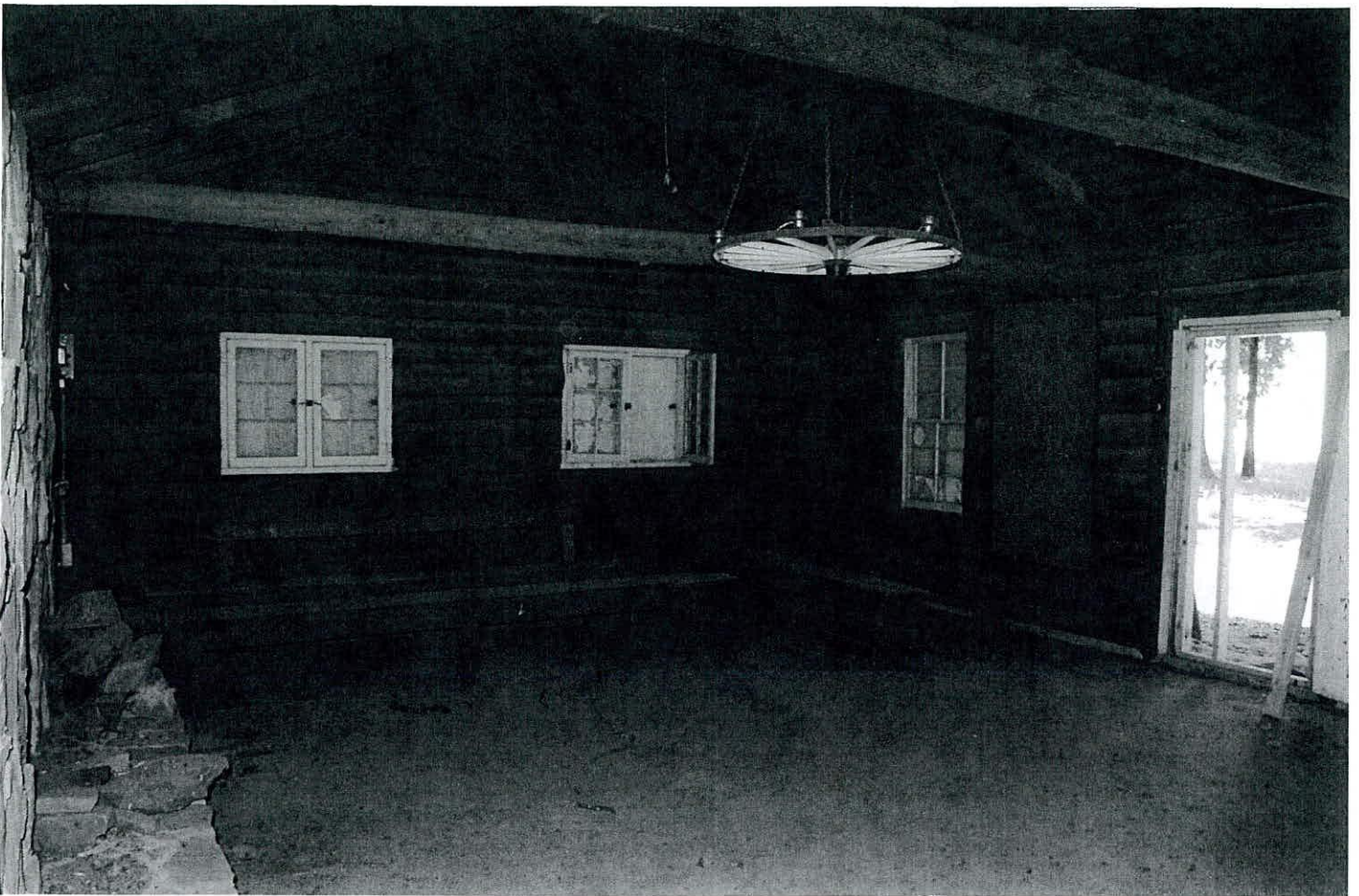
CAR-288
Chambers Park Log Cabin

Name of Property

Caroline County, MD

County and State

Section PHOTOS Page 9



MD_CarolineCounty_ChambersParkLogCabin_0009

United States Department of the Interior
National Park Service

National Register of Historic Places Continuation Sheet

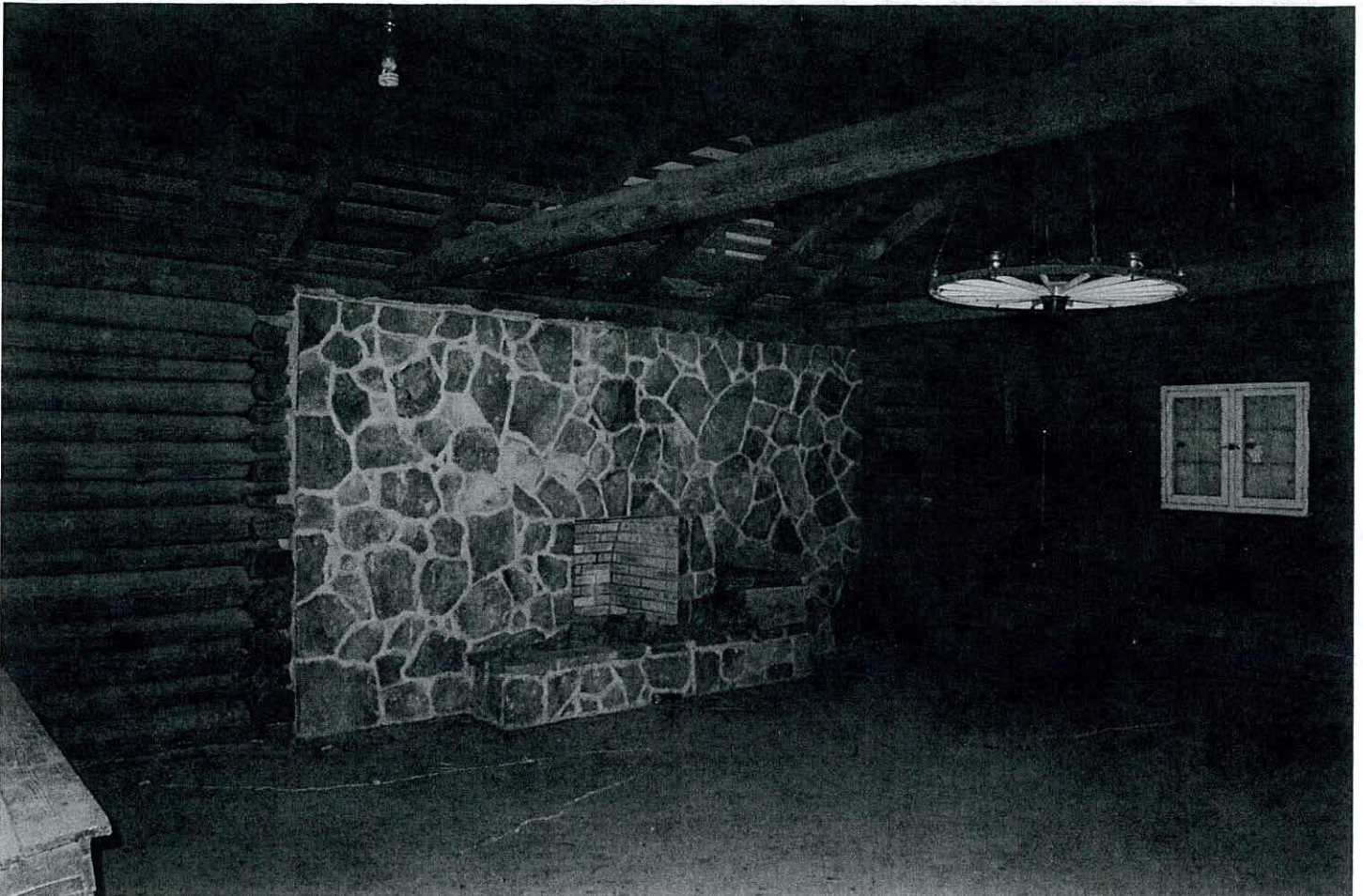
CAR-288
Chambers Park Log Cabin

Name of Property

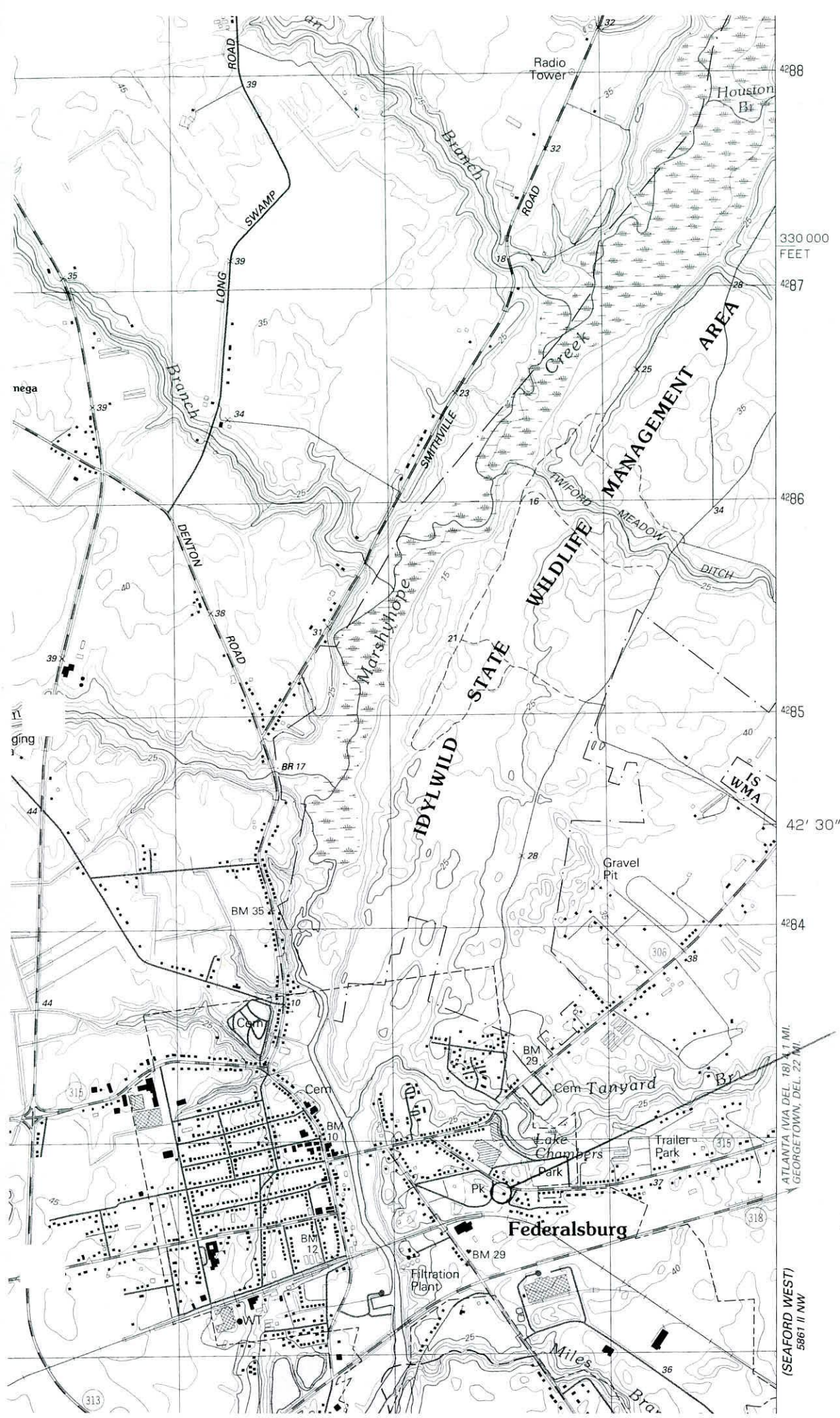
Caroline County, MD

County and State

Section PHOTOS Page 10



MD_CarolineCounty_ChambersParkLogCabin_0010



CAR-288
 CHAMBERS
 PARK
 LOG CABIN
 CAROLINE CO.
 MARYLAND
 18-433527-
 4282975

(SEAFORD WEST)
 5861 II NW
 ATLANTA (VIA DEL 18) 4.1 MI.
 GEORGETOWN, DEL. 22 MI.