

HO-798

## Claremont

### **Architectural Survey File**

This is the architectural survey file for this MIHP record. The survey file is organized reverse-chronological (that is, with the latest material on top). It contains all MIHP inventory forms, National Register nomination forms, determinations of eligibility (DOE) forms, and accompanying documentation such as photographs and maps.

Users should be aware that additional undigitized material about this property may be found in on-site architectural reports, copies of HABS/HAER or other documentation, drawings, and the “vertical files” at the MHT Library in Crownsville. The vertical files may include newspaper clippings, field notes, draft versions of forms and architectural reports, photographs, maps, and drawings. Researchers who need a thorough understanding of this property should plan to visit the MHT Library as part of their research project; look at the MHT web site ([mht.maryland.gov](http://mht.maryland.gov)) for details about how to make an appointment.

All material is property of the Maryland Historical Trust.

***Last Updated: 02-07-2013***

HO-798

"Claremont"

6005 North Meyer Drive

Private

DESCRIPTION:

"Claremont" is a 2½-story, five-bay by two-bay frame structure with a two-story, one-bay by two-bay ell on the west. It has a parged brick foundation, frame walls with asbestos shingles and corner boards with large beads, and an "M" roof with east-west ridges and asphalt shingles. There is a chimney stack in the center of each ridge, consisting of four chimneys ganged together; each chimney shaft is chamfered and has modillions. On the east elevation the first story has a center entrance that is recessed, with paired doors that have three bolection-moulded panels each. There are two six-over-nine double hung sash to each side of the doorway, and they have architrave with plain backband and a large bead on the inner edge. The architrave is crosssetted at the top and is splayed at the bottom. There is a porch that wraps around the south and west, and the porch is supported by square columns that are paneled and have a round bolection mould. The porch breaks forward in the center of the east elevation. The cornice contains large brackets with drop pendants, and there are panels between the brackets. The first story has a center-passage double-pile plan with one room in the ell. A dogleg stair ascends on the north wall to a landing at the west end. There are cast-plaster ceiling medallions in the major rooms. The southeast room has a mantel that appears to be of Siena marble, and it has a round-arched opening. The northeast room has a white marble mantel with a semi-circular-arched opening, with a scrolled keystone and spandrels that are carved with flowers and foliage. There is a brick summer kitchen behind the house.

SIGNIFICANCE:

The land upon which "Claremont" is built was purchased in November 1858 by Dr. James Hall, a native of New Hampshire who founded the Maryland settlement of former slaves at Cape Palmas, and upon his return to Baltimore was made the manager of the Maryland State Colonization Society. The house was designed by architect R. Snowden Andrews, of Baltimore, and built by Johnzee Selby of Carroll County and John S. Miller of Baltimore County; it was finished in October 1858. "Claremont" is a rather traditional center-passage, double-pile plan on the interior, but is wrapped in Italianate details such as the wide, overhanging eaves supported by large brackets, and the square columns and brackets on the wrap-around porch. Andrews also gave some variety to the exterior by using an "M" roof and placing the gable ends on the front, by using round-topped dormers that break through the eave line, and by building individual flues for the fireplaces, but tying them together in loose stacks and finishing them with chamfered corners and modillions. The interior finishes, with marble mantels that have round-arched openings, and robust, sinuous acanthus leaves in the plaster ceiling medallions, are typical of the best interiors in Baltimore in the 1850s. The house is little changed from when it was completed. Hall apparently lived at "Claremont" year-round, which was possible because of its proximity to the Washington Branch of the B. & O. Railroad. In 1942 it was acquired by the Meyer family, and they are currently developing the land around the house, though the house and kitchen will be retained and offered for sale shortly.



## 7. Description

Inventory No. HO-798

### Condition

excellent       deteriorated  
 good             ruins  
 fair               altered

Prepare both a one paragraph summary and a comprehensive description of the resource and its various elements as it exists today.

### SUMMARY:

"Claremont" is a 2½-story, five-bay by two-bay frame structure with a two-story, one-bay by two-bay ell on the west. It has a parged brick foundation, frame walls with asbestos shingles and corner boards with large beads, and an "M" roof with east-west ridges and asphalt shingles. There is a chimney stack in the center of each ridge, consisting of four chimneys ganged together; each chimney shaft is chamfered and has modillions. On the east elevation the first story has a center entrance that is recessed, with paired doors that have three bolection-moulded panels each. There are two six-over-nine double hung sash to each side of the doorway, and they have architrave with plain backband and a large bead on the inner edge. The architrave is crossetted at the top and is splayed at the bottom. There is a porch that wraps around the south and west, and the porch is supported by square columns that are paneled and have a round bolection mould. The porch breaks forward in the center of the east elevation. The cornice contains large brackets with drop pendants, and there are panels between the brackets. The first story has a center-passage double-pile plan with one room in the ell. A dogleg stair ascends on the north wall to a landing at the west end. There are cast-plaster ceiling medallions in the major rooms. The southeast room has a mantel that appears to be of Siena marble, and it has a round-arched opening. The northeast room has a white marble mantel with a semi-circular-arched opening, with a scrolled keystone and spandrels that are carved with flowers and foliage. There is a brick summer kitchen behind the house.

### DESCRIPTION:

"Claremont" is located at 6005 North Meyer Drive (formerly) 6051 Lawyers Hill Road in Lawyers Hill, in the Elkrige vicinity of northeastern Howard County, Maryland. The house faces east toward the river and is set high on the hill, originally at the end of a long drive from the west, but there is currently development going on around the house and the hill is being cut back, leaving the house sitting higher than it originally did. The complex consists of a large frame house and a brick summer kitchen behind it.

### House, exterior

The house is a 2½-story, five-bay by two-bay frame structure with a two-story, one-bay by two-bay ell on the west. It has a parged brick foundation, frame walls with asbestos shingles and corner boards with large beads, and an "M" roof with east-west ridges and asphalt shingles. There is a chimney stack in the center of each ridge, consisting of four chimneys ganged together; each chimney shaft is chamfered and has modillions. On the east elevation the first story has a center entrance that is recessed, with one step up in the recess to paired doors that have three bolection-moulded panels each, with sunken fields and coved corners. Flanking the door are chamfered square columns, and the transom bar has an ogee at the

**Maryland Historical Trust**  
**Maryland Inventory of**  
**Historic Properties Form**

Inventory No. HO-798

Name  
**Continuation Sheet**

Number 7 Page 1

---

top with a quirked ogee above a broken field below that. There is a grate set into the floor in the recess. There are side lights with three lights over one bolection-moulded panel, and these match the door. The transom has three lights. There is a wood cornice above it that has a cavetto-and-bead bed mould and a small ogee at the top of the cornice. This ogee is carried around the whole porch. There are two six-over-nine double hung sash to each side of the doorway, and they have architrave with plain backband and a large bead on the inner edge. The architrave is crossetted at the top and is splayed at the bottom. The porch has new Trex decking and a tongue-and-grooved board soffit. It wraps around the south and west. The porch is supported by square columns that are paneled and have a round bolection mould. There is a Greek torus and cavetto on the base and the capital. These columns are set on brick piers and are paired in the center. The porch breaks forward in the center and has four painted concrete steps. There is a bracket at each column that has a scroll with a drop pendant. The porch has a wood box cornice with an internal gutter. The second-story center bay is recessed and contains a segmentally-arched six-over-nine sash, with two six-over-six double-hung sash to each side of it that have architrave that matches the first story. The two gable ends on the east elevation each have a six-over-six sash with typical architrave. There is a box cornice that follows the pitch of the rafters. The cornice contains large brackets with drop pendants, and there are panels between the brackets that are flat and have a bolection moulding. The center bay has a gabled dormer with paired two-light casements.

The south elevation has two paired four-over-six double-hung sash with typical architrave on the first story. The architrave is eared in the center. The porch has the same details as on the east elevation, and there are three granite steps in the center, with concrete creek walls. The second story has two paired four-over-four sash. There are two dormers that break through the eave with round-arched tops that have flat copper roofs. The dormers contain paired three-light casements that are round-arched.

The west elevation of the ell, on the first story, has a six-over-six sash with head-cut trim set to the north, and there are Bilco doors below. To the south is a four-panel door that has sunken fields and quirked ogee-and-bevel panel moulds. The architrave matches that of the windows, but is not crossetted at the top and is splayed at the bottom. The second story has a six-over-six sash in the center that matches the first story, and the gable end also has a six-over-six sash in the center that matches the first and second stories. The cornice has typical brackets with panels between them. The west elevation of the main block, on the first story, has a four-panel door with a three-light transom set to the south, and a typical six-over-nine sash set to the north. The second-story north bay has a typical six-over-six sash that is set low on the story, and the south bay has a typical six-over-six sash set just north of the south ridge. Both of these windows have typical architrave. The gable end has a semi-circular-arched six-over-six sash with typical architrave, and the cornice has matching brackets and panels. In the center of this elevation is a gabled dormer that matches the east elevation, but is round-arched. The south elevation of the ell, on the first story, has a four-panel door with a three-light transom, and typical

**Maryland Historical Trust**  
**Maryland Inventory of**  
**Historic Properties Form**

Inventory No. HO-798

Name

**Continuation Sheet**

Number 7 Page 2

---

architrave. The second story has a typical six-over-six sash set low on the wall, and it aligns with the main block north bay window.

The north elevation is three bays. On the first story the east bay has a five-sided bay window with bolection-moulded panels below the sills and on the sides next to the wall. The bay has four-over-four double-hung sash, and there are scroll brackets and a cornice with a large ogee above a small ogee. The center bay has a typical six-over-six sash, and the west bay has paired four-over-four sash. On the second story the east bay and the west bay each have a paired four-over-four sash, while the center bay has a typical six-over-six sash. There are two round-arched dormers that match those on the south elevation, and the cornice has brackets with panels between them that also match the rest of the house. There is a single brick chimney at the west end of the ell, and it is chamfered at the corners and has modillions.

**House, interior**

The first story has a center-passage double-pile plan with one room in the ell. The passage has random-width pine flooring that varies between 4 and 5 inches, and it runs east-west. The baseboard, wainscot, and rail all have a natural finish, and the baseboard has a quirked ogee and fillet, with a quirk and bead at the top. There is bead-board wainscot with a rail at the top that has a torus above a small cavetto. The architrave is paneled and is sunken and flat in the center, with a beaded interior edge. There are pyramidal corner blocks. The front double doors have three panels each, with sunken fields and quirked-ogee-and-bevel panel moulds. They are each hung on three brass butt hinges that are plain and have five knuckles. The mortise lock is missing. The sidelights have frosted patterns on the glass, some of them foliate and some of them with a lozenge pattern. The sidelights are set above one panel that matches the door. The three-light transom has end lights set over the sidelights, and these have applied color illustrations that are labeled "La PENSE" and "YE DAFFODIL." There is a run plaster cornice that has a deep cove with a large bead on either side of the cove. There is a cast plaster ceiling medallion that is long and narrow and foliate, with acanthus at the east and west ends. A dogleg stair ascends on the north wall to a landing at the west end. It has an open stringer with sawn scroll brackets, and there are four panels below the stringer that have sunken fields and quirked-ogee-and-bevel panel moulds. The balusters are turned and have an attenuated urn profile; they appear to be walnut. The newel post has a heavy urn profile with a large round top, and the handrail abuts this top; the newel is walnut and the handrail appears to be walnut. There is a floor register near the foot of the stairs, of a foliate iron pattern. The interior doors have six panels with sunken fields and quirked-ogee-and-bevel panel moulds. They are hung on butt hinges with five knuckles and have heavy paint, but appear to be labeled "BALDWIN." They have mortise locks with brass foliate knobs, and these knobs appear to date to the 20<sup>th</sup> century. There are two doors on the rear elevation, and they each have four panels that otherwise are identical to the interior doors; there is a three-light transom above each of these rear doors. There is a closet beneath the stairway that also has a four-panel door.

**Maryland Historical Trust**  
**Maryland Inventory of**  
**Historic Properties Form**

Inventory No. HO-798

Name  
**Continuation Sheet**

Number 7 Page 3

---

The southeast room has the same flooring, baseboard, architrave, and cornice as the passage. The sash extend down to the floor, and have lancet-profile muntins and 12-inch by 22-inch lights. They have parting beads and are hung on cords. There are interior blinds that are adjustable, and there are no boxes for the blinds to fold into, so they project into the room beyond the plane of the wall. They are hung on cast iron butt hinges that are heavily painted and have five knuckles, and the hinges and shutter latches all appear to be original. There is a fireplace centered on the west elevation, with a mantel that appears to be of Siena marble. It has a round-arched opening with a leaf as a keystone, and the spandrels have an egg in the center with C-scrolls. The shelf has an ogee profile. The hearth is painted stone and there are splayed brick firebox jambs. To the north of the fireplace is a doorway that leads to the southwest room. There is a floor register near the hearth, and it is plain. There is a cast plaster ceiling medallion that has four large, deeply lobed acanthus leaves. There is no evidence of call bells surviving in this room.

The southwest room has typical flooring, baseboard, architrave, and cornice. The windows and blinds are identical to the southeast room. There is a cast plaster ceiling medallion containing six deeply-lobed, sinuous acanthus leaves. There is a fireplace centered on the east elevation, and the mantel appears to be of Italian black and gold marble, with a plain black shelf. It has a square opening to the firebox, and the mantel has plain pilasters. The hearth is painted and may be slate. The firebox has splayed jambs of pressed brick that have been painted. There is a heating grate with a geometric pattern near the hearth.

The northeast room has typical flooring, baseboard, architrave, and cornice. The ceiling medallion matches that in the southeast room. There are typical windows on the east, and a bay on the north in which the windows do not extend down to the floor but otherwise match the other windows; they also have blinds. There is a fireplace centered on the west elevation, which has a white marble hearth and mantel. The latter has a semi-circular-arched opening with a scrolled keystone that has flowers and foliage on top of it. The spandrels are carved with flowers and foliage. The firebox has splayed jambs of pressed brick that have been painted. There are typical doors to each side of the fireplace. The north door leads to a closet in which two shelves survive and a third was removed in order to place an iron safe in the closet. This door has a porcelain knob. The safe is labeled "Built at Millers Safe & Iron Works Baltimore" and "L. H. Miller Baltimore" on the feet. The north jamb of the fireplace has a call bell handle. The other doors have plain new brass knobs. There is a heating grate with a geometric pattern near the south door in the floor.

The northwest room is divided into a passage, a small room that may have been a pantry, and part of the kitchen, which continues into the entire ell space. These room divisions appear to be original. The rear passage has baseboard that has a broken field, and architrave that has a broken field with a bead on the inner edge. There are typical four-panel doors. There is a three-light transom above the pantry door.

**Maryland Historical Trust**  
**Maryland Inventory of**  
**Historic Properties Form**

Inventory No. HO-798

Name  
**Continuation Sheet**

Number 7 Page 4

---

There is a closet on the north elevation, between the pantry and the kitchen, and it has a two-panel door that has sunken fields and quirked Greek ogee panel moulds. There are five shelves inside this closet. There is also a closet set high up on the west elevation, and it has a one-panel door that has a sunken field and no panel moulds. The small room that was probably originally a pantry is now a modern bathroom. It has a closet set high on the east wall, to the north, and the door to this closet matches that to the high closet in the passage. There is a typical window on the north elevation, but the bottom half of the window has been covered over with tile. The door to this room has glass knobs, and the hinges are labeled "BALDWIN" and "PATENT."

The ell room is a modern kitchen with baseboard that has a quirked-ogee-and-bevel and architrave that matches the northwest passage. It has typical short windows, and there is a closet on the south elevation that has no evidence that it ever had a door. The closet has three-sided shelves that survive inside it. The west wall has a closed-off fireplace with no mantel. There is a typical four-panel door to the south that leads to the outside. The south wall has a typical four-panel door to the west that leads to the rear stair hall in the ell. The ell stair hall has linoleum on the floor and a door on the south elevation that has a three-light transom above and leads to the exterior. There is a winder stair on the west that ascends to the south, with a closet built in to the center, and a winder stair to the basement that is set to the south. The basement door has four panels with sunken fields and no panel moulds. It has porcelain knobs. The closet door here matches this door, but is only of two panels with vertical beaded boards above these two doors. There is chair rail on the winder stair and it has a bead at the top and bottom. The east wall has a metal post set high on the wall, and this appears to be to hold a call bell. The interior doors have through-tenons with wedges, but are not pinned.

The second story plan matches that of the first story. The passage has typical flooring and baseboard, and the architrave has a broken field with an ogee and bevel at the break and a bead on the interior edge. There is a small moulding at the ceiling that consists of a torus above a cavetto. The interior doors are typical four-panel doors with mortise locks that have brass knobs, and they are hung on cast iron butt hinges that are marked "BALDWIN." The stair details match the first story, and the stairway continues to the attic with a landing at the west end. The landing between the first and second stories has a typical four-panel door to the north and a typical short window to the south, with typical blinds at this window. The landing between the second story and attic has a typical four-panel door to the north, and there is a dormer in the slope of the roof with a semi-circular arched sash. At the east end of the second-story passage is a segmentally-arched window with typical blinds. The window extends down to the baseboard, but not to the floor.

The southeast chamber flooring, baseboard, and architrave match that in the second-story passage. There are typical short windows with blinds. On the west elevation is a fireplace with a painted hearth and a white and grey marble mantel that has plain pilasters and frieze, no bed mould, and a plain shelf.

**Maryland Historical Trust**  
**Maryland Inventory of**  
**Historic Properties Form**

Inventory No. HO-798

Name  
**Continuation Sheet**

Number 7 Page 5

---

The splayed brick jambs are painted. There is a modern heating grate on the wall, to the north of the fireplace. North of this grate is a closet with a typical four-panel door. There are two rows of slender iron hooks on all three walls of this closet. At the top of the west elevation, in the center of the wall above the fireplace, is a foliate iron grate that appears to be original.

The southwest chamber flooring, baseboard, architrave, and ceiling moulding all match that in the second-story passage. There is a fireplace on the east elevation that matches that in the southeast chamber, and has the same mantel and the same grates set low and high on the wall. There is a closet to the south of this fireplace that matches the southeast chamber closet, and has the same hooks. This chamber also has the typical short windows with blinds.

The remainder of the second story, the attic story, and the basement, could not be documented in the time allowed. The basement has some small brick chambers that may relate to central heating, however there was insufficient time to examine and analyze them. They deserve more careful documentation in the future.

**Summer kitchen**

The summer kitchen is located about 50 feet west of the house, and is a one-story, two-bay by two-bay structure of five-to-one common-bond brick, with a hip roof that has asphalt shingles. There is a brick chimney in the center of the building, and the cornice consists of two corbelled courses of brick. The south elevation has a four-panel door to the west that has sunken fields and no panel moulds. This opening has a straight rowlock jack arch. The east bay has paired eight-light casements with a brick sill and no jack arch. The east elevation has two eight-light casements with wood sills and no jack arches. On the north elevation, the east bay has a pair of eight-light casements with no jack arch, and it has a parged sill. On the west elevation there are two pair of eight-light casements that have had the wood sills replaced, and have no jack arches.

## 8. Significance

Inventory No. HO-798

Period	Areas of Significance	Check and justify below		
<input type="checkbox"/> 1600-1699	<input type="checkbox"/> agriculture	<input type="checkbox"/> economics	<input type="checkbox"/> health/medicine	<input type="checkbox"/> performing arts
<input type="checkbox"/> 1700-1799	<input type="checkbox"/> archeology	<input type="checkbox"/> education	<input type="checkbox"/> industry	<input type="checkbox"/> philosophy
<input checked="" type="checkbox"/> 1800-1899	<input checked="" type="checkbox"/> architecture	<input type="checkbox"/> engineering	<input type="checkbox"/> invention	<input type="checkbox"/> politics/government
<input type="checkbox"/> 1900-1999	<input type="checkbox"/> art	<input type="checkbox"/> entertainment/ recreation	<input type="checkbox"/> landscape architecture	<input type="checkbox"/> religion
<input type="checkbox"/> 2000-	<input type="checkbox"/> commerce	<input type="checkbox"/> ethnic heritage	<input type="checkbox"/> law	<input type="checkbox"/> science
	<input type="checkbox"/> communications	<input type="checkbox"/> exploration/ settlement	<input type="checkbox"/> literature	<input type="checkbox"/> social history
	<input type="checkbox"/> community planning		<input type="checkbox"/> maritime history	<input type="checkbox"/> transportation
	<input type="checkbox"/> conservation		<input type="checkbox"/> military	<input type="checkbox"/> other: _____

Specific dates N/A

Architect/Builder R. Snowden Andrews/Johnzee Selby

Construction dates 1858

Evaluation for:

 National Register Maryland Register not evaluated

Prepare a one-paragraph summary statement of significance addressing applicable criteria, followed by a narrative discussion of the history of the resource and its context. (For compliance projects, complete evaluation on a DOE Form – see manual.)

### SUMMARY:

The land upon which "Claremont" is built was purchased in November 1858 by Dr. James Hall, a native of New Hampshire who founded the Maryland settlement of former slaves at Cape Palmas, and upon his return to Baltimore was made the manager of the Maryland State Colonization Society. The house was designed by architect R. Snowden Andrews, of Baltimore, and built by Johnzee Selby of Carroll County and John S. Miller of Baltimore County; it was finished in October 1858. "Claremont" is a rather traditional center-passage, double-pile plan on the interior, but is wrapped in Italianate details such as the wide, overhanging eaves supported by large brackets, and the square columns and brackets on the wrap-around porch. Andrews also gave some variety to the exterior by using an "M" roof and placing the gable ends on the front, by using round-topped dormers that break through the eave line, and by building individual flues for the fireplaces, but tying them together in loose stacks and finishing them with chamfered corners and modillions. The interior finishes, with marble mantels that have round-arched openings, and robust, sinuous acanthus leaves in the plaster ceiling medallions, are typical of the best interiors in Baltimore in the 1850s. The house is little changed from when it was completed. Hall apparently lived at "Claremont" year-round, which was possible because of its proximity to the Washington Branch of the B. & O. Railroad. In 1942 it was acquired by the Meyer family, and they are currently developing the land around the house, though the house and kitchen will be retained and offered for sale shortly.

### SIGNIFICANCE:

The land upon which "Claremont" is built was purchased by Baltimore businessman John T. Woodside in 1851 for \$7,000, and on it he built a large frame country house, known as "Woodlawn," that cost nearly \$6,000. Woodside had poor health, and died suddenly of a ruptured blood vessel in 1856. His widow and children were living at "Woodlawn" a year later when the house was robbed and set on fire,

# Maryland Historical Trust

## Maryland Inventory of

### Historic Properties Form

Inventory No. HO-798

Name  
Continuation Sheet

Number 8 Page 1

---

escaping with their lives but with little else. The kitchen behind the mansion house also caught fire and was destroyed. Margaret Woodside then apparently defaulted on the mortgage on "Woodlawn" and the property was ordered sold by the court. It was purchased in November 1858 by Dr. James Hall, a native of New Hampshire who was educated at Bowdoin College and the Medical University of Yale. Hall became interested in the plight of African-Americans while wintering in Haiti, later came to Baltimore to try to improve his health, and subsequently took a trip to Africa. In time he founded the Maryland settlement at Cape Palmas, and upon his return to Baltimore was made the manager of the Maryland State Colonization Society and a director of the American Colonization Society.<sup>1</sup>

A narrow wooden board found in the house has written on it: "This house owned by Dr. J. Hall of Baltimore. Built by Johnzee Selby, Carroll Co. and John S. Miller, Balt. Co. Painted by John Bowerson, Balt. Co. Collums [sic] on Anchors executed by John H. Pugsley, Baltimore. Architect R. Snowden Andrews, Baltimore. Aug. 1858, finished Oct. 1858." The date of completion, prior to the execution of the deed, is rare confirmation of a pattern seen frequently in the nineteenth century – that new owners would add to or replace buildings before actually having legal title to the property on which they sat. Johnzee Selby was listed in the 1860 census as a 54-year-old farmer, but was also a well-known builder in the area of Sykesville. Miller is listed in the 1860 census as a 50-year-old carpenter, and was living in southwestern Baltimore County, in the Soldier's Delight area. John H. Pugsley seems to have been a carpenter of questionable character. The New York native was arrested in 1851 on suspicion of arson, but could not be connected to the incendiary materials and was released. In 1859 he was arrested for brutally beating his 15-year-old daughter and was found guilty. The 1860 census lists the 47-year-old carpenter twice, in early July living at home in the eighth ward of Baltimore City, and by the end of the month residing in the city jail. Despite his deficiencies of character, Pugsley must have been a capable mechanic, if he was still being hired in 1858 to do specialty carpentry.<sup>2</sup>

R. Snowden Andrews, a native of Washington, D. C., had worked in the office of Baltimore architects Niernsee and Neilson earlier in the 1850s and is best known for his design of the Eastern Female High School (1869) and the Episcopal Church of the Redeemer (1856) in Baltimore. Ironically, after getting the commission from Hall, a supporter of the formation of Liberia, Andrews was to serve in the

---

<sup>1</sup> *Baltimore Sun*, 4 September 1856, p. 1, col. 6. *Baltimore Sun* 10 November 1857, p. 1, col. 6. *Baltimore Sun*, 4 September 1889, p. 2, col. 5. More on Hall's activities with colonization can be found in Kristin Hill, "Claremont" (HO-798), Maryland Inventory of Historic Properties, 2003.

<sup>2</sup> U. S. Bureau of the Census, Freedom District, Carroll County, Maryland, 1860. U. S. Bureau of the Census, District 2, Baltimore County, Maryland, 1860. J. C. Sidney, *Map of the City and County of Baltimore*, 1850. *Baltimore Sun*, 26 April 1851, p. 1, col. 7. *Baltimore Sun*, 12 December 1859, p. 1, col. 7; *Baltimore Sun*, 4 April 1860, p. 1, col. 7. U. S. Bureau of the Census, 8<sup>th</sup> ward, Baltimore City, Maryland, 1860.

# Maryland Historical Trust

## Maryland Inventory of Historic Properties Form

Inventory No. HO-798

Name  
**Continuation Sheet**

Number 8 Page 2

---

Confederacy during the Civil War, where he was terribly wounded. The house that he designed for Hall is a rather traditional center-passage, double-pile plan on the interior, but is wrapped in Italianate details such as the wide, overhanging eaves supported by large brackets, and the square columns and brackets on the wrap-around porch. Andrews also gave some variety to the exterior by using an "M" roof and placing the gable ends on the front, by using round-topped dormers that break through the eave line, and by building individual flues for the fireplaces, but tying them together in loose stacks and finishing them with chamfered corners and modillions. The interior finishes, with marble mantels that have round-arched openings, and robust, sinuous acanthus leaves in the plaster ceiling medallions, are typical of the best interiors in Baltimore in the 1850s. However, while the interiors have some grand finishes, they can hardly be said to rival the best interiors of Baltimore, in toto, for the period, and the exterior lacks the originality and sumptuousness of the best work of Niernsee and Neilson, E. G. Lind, Or N. G. Starkweather at this time. Nonetheless, "Claremont" is a significant house for Howard County in the antebellum period, and well illustrates how far the county's taste, influenced by Baltimore, had come from the traditional Georgian-Federal pile.<sup>3</sup>

The house is little changed from when it was completed. It was illustrated in the Martenet Map of Howard County in 1860, and at that time had a balustrade on the porch roof. Additions of asbestos shingles and metal awnings are unfortunate but easily reversed. This little vignette also shows a windmill behind the house, and it appears to pass through the roof of a building that probably sheltered the well at that time. The windmill would have pumped water to a cistern in the attic, where pipes would have then fed one or more bathrooms and the kitchen with running water via gravity. At this time it was most common to use a water ram to pump the water to the cistern in Maryland, and a windmill would have been considered cutting-edge technology. Running water was introduced into the finest Baltimore homes by the 1830s, but was still not common in the country. Additional investigation of the house could find remnants of this early plumbing. Also, there are remains in the basement of an early central heating system that warrant further investigation and documentation.<sup>4</sup>

Hall apparently lived at "Claremont" year-round, which was possible because of its proximity to the Washington Branch of the B. & O. Railroad. Lawyer's Hill began to be developed for country houses for Baltimore businessmen to escape the heat of the city in the summer in the 1830s and '40s, after the railroad was completed. Hall must have also been drawn to Lawyer's Hill because John H. B. Latrobe, the first president of the Maryland Colonization Society, lived here. After Hall's death in 1889

---

<sup>3</sup> John Dorsey and James D. Dilts, *A Guide to Baltimore Architecture*. (Centreville, MD: Tidewater Publishers, 1981), p. 269. Mary Ellen Hayward and Frank R. Shivers, Jr., eds., *The Architecture of Baltimore: An Illustrated History* (Baltimore: The Johns Hopkins University Press, 2004), pp. 138, 194, 295.

<sup>4</sup> Simon J. Martenet, *Martenet's Map of Howard County, Maryland* (Baltimore, 1860).

**Maryland Historical Trust**  
**Maryland Inventory of**  
**Historic Properties Form**

Inventory No. HO-798

Name  
**Continuation Sheet**

Number 8 Page 3

---

“Claremont” passed to his only son, George, then to George’s daughters, and was sold in 1915 to Frederick and Anne Sieling. In 1942 it was acquired by the Meyer family, and they are currently developing the land around the house, grading it significantly which will alter the setting of the house, though the house and kitchen will be retained and offered for sale shortly.<sup>5</sup>

---

<sup>5</sup> *Baltimore City Directory*, (John W. Woods, 1860, 1864, 1868-69).

---

## 9. Major Bibliographical References

---

Inventory No. HO-798

See footnotes

---

## 10. Geographical Data

---

Acreage of surveyed property 8,274 sq. ft.  
Acreage of historical setting 44.57 A  
Quadrangle name Elkridge

Quadrangle scale: 1:24000

---

### Verbal boundary description and justification

The boundaries consist of the outlines of the property, tax map 32, parcel 24, lot 14, which encompasses all of the historic buildings and features on the site.

---

## 11. Form Prepared by

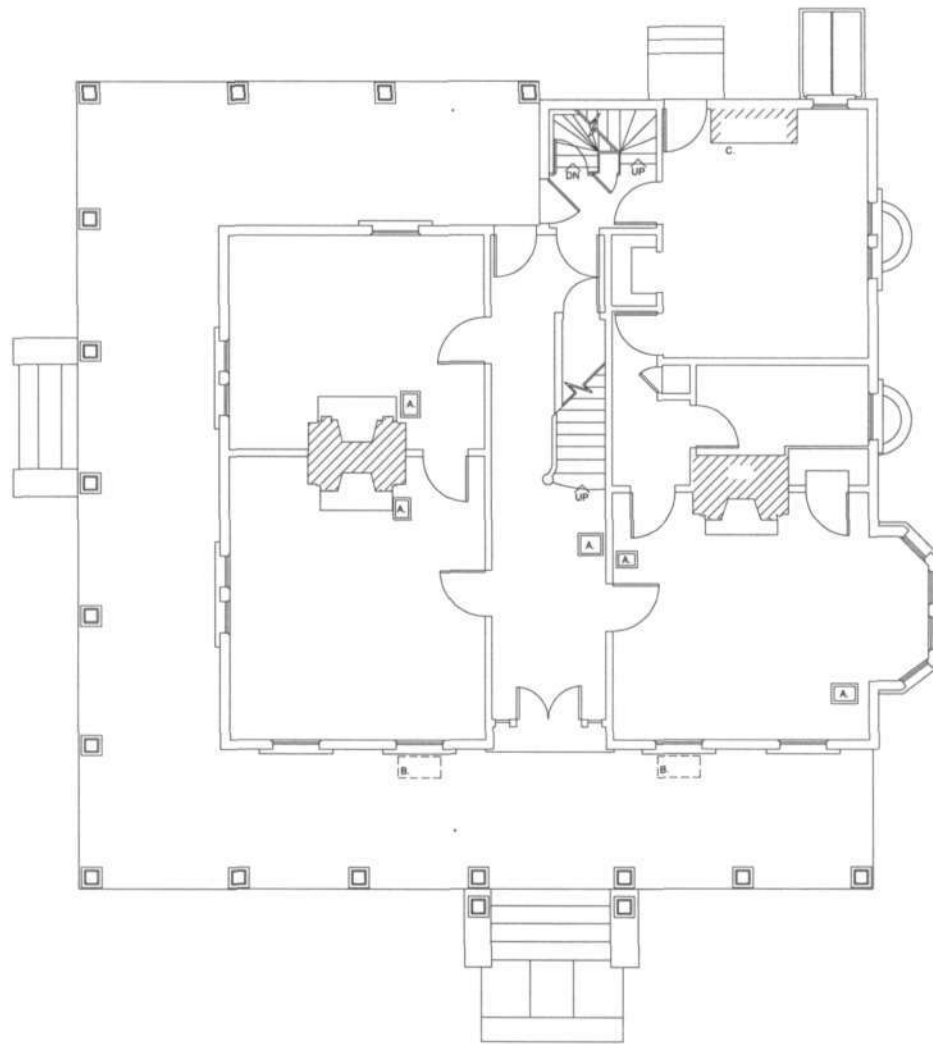
---

name/title	Ken Short		
organization	Howard County Department of Planning & Zoning	date	October 2011
street & number	3430 Courthouse Drive	telephone	410-313-4335
city or town	Ellicott City	state	MD

The Maryland Inventory of Historic Properties was officially created by an Act of the Maryland Legislature to be found in the Annotated Code of Maryland, Article 41, Section 181 KA, 1974 supplement.

The survey and inventory are being prepared for information and record purposes only and do not constitute any infringement of individual property rights.

return to: Maryland Historical Trust  
DHCD/DHCP  
100 Community Place  
Crownsville, MD 21032-2023  
410-514-7600



NOTES:  
 A. EARLY HEATING GRATE.  
 B. THICK GLASS SET INTO ORIGINAL  
 DECK--REMOVED AND PLACED IN  
 STORAGE WHEN DECK REPLACED.  
 C. FIREBOX CLOSED OFF.

0 1 2 3 4 5 10 20 FEET

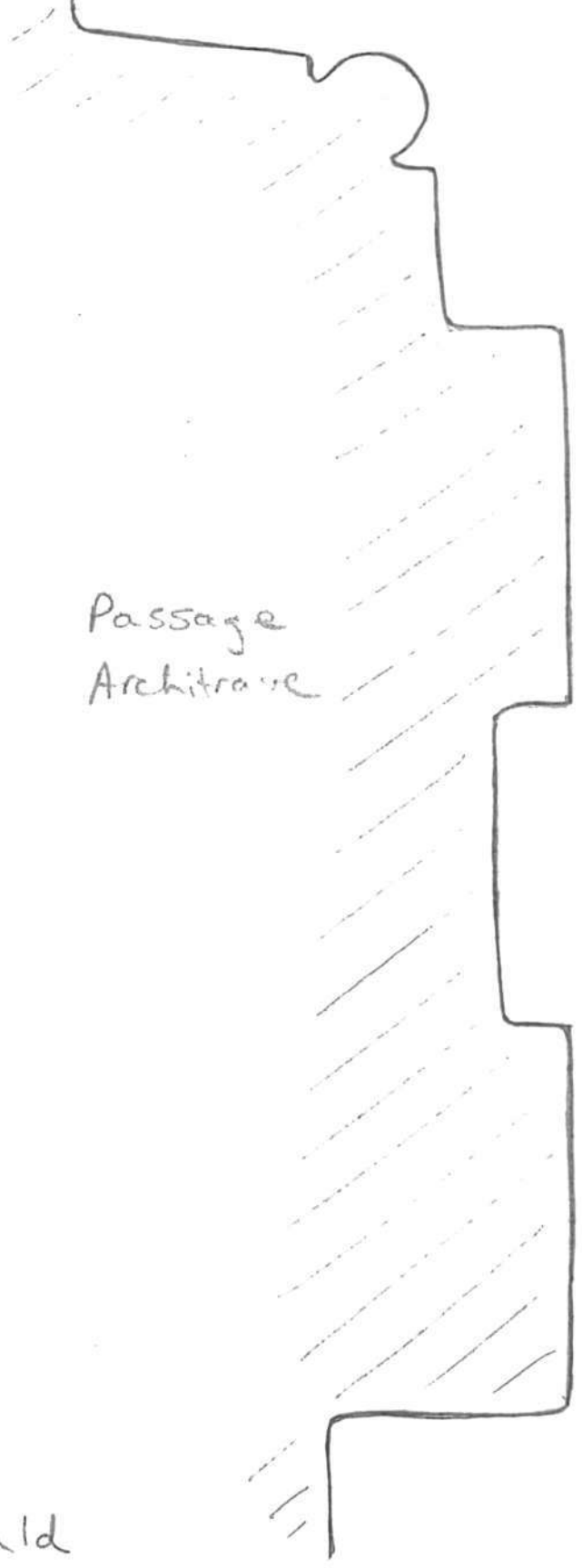
## HO-798 "CLAREMONT" 6051 LAWYER'S HILL ROAD

FIRST FLOOR PLAN -- MEASURED BY KEN SHORT AND BRUCE ALEXANDER -- DRAWN BY KEN SHORT -- JUNE 2010

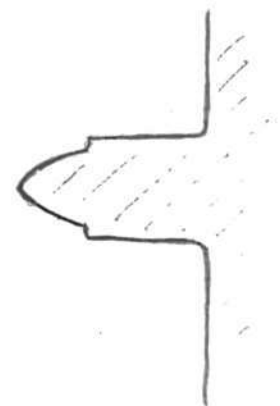
1/5 Claremont HO-798

Moulding Profiles

KAS 14 May '10



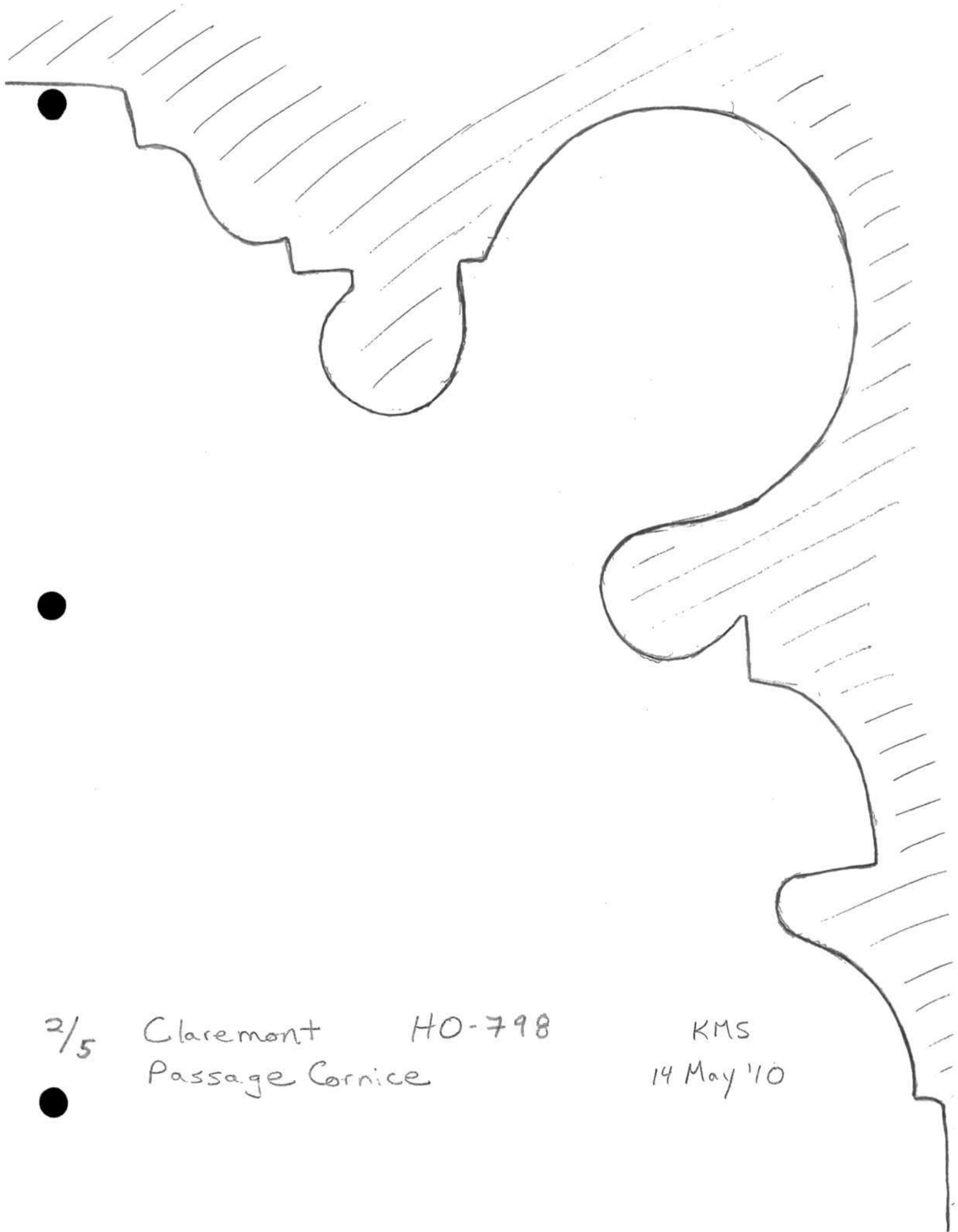
Passage  
Architrave



Window  
Muntin



Front Door  
Panel Mould



2/5

Claremont

HO-798

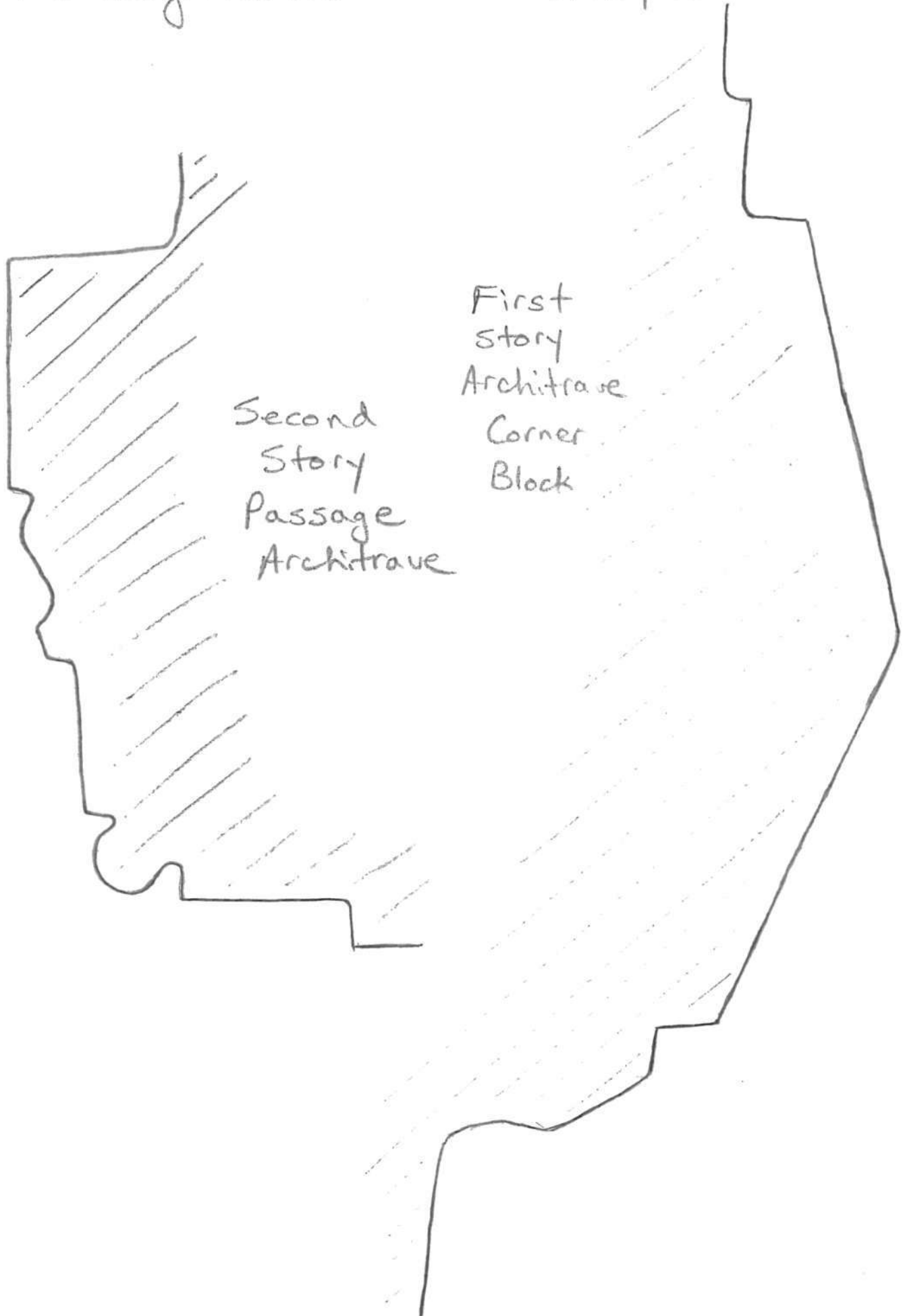
KMS

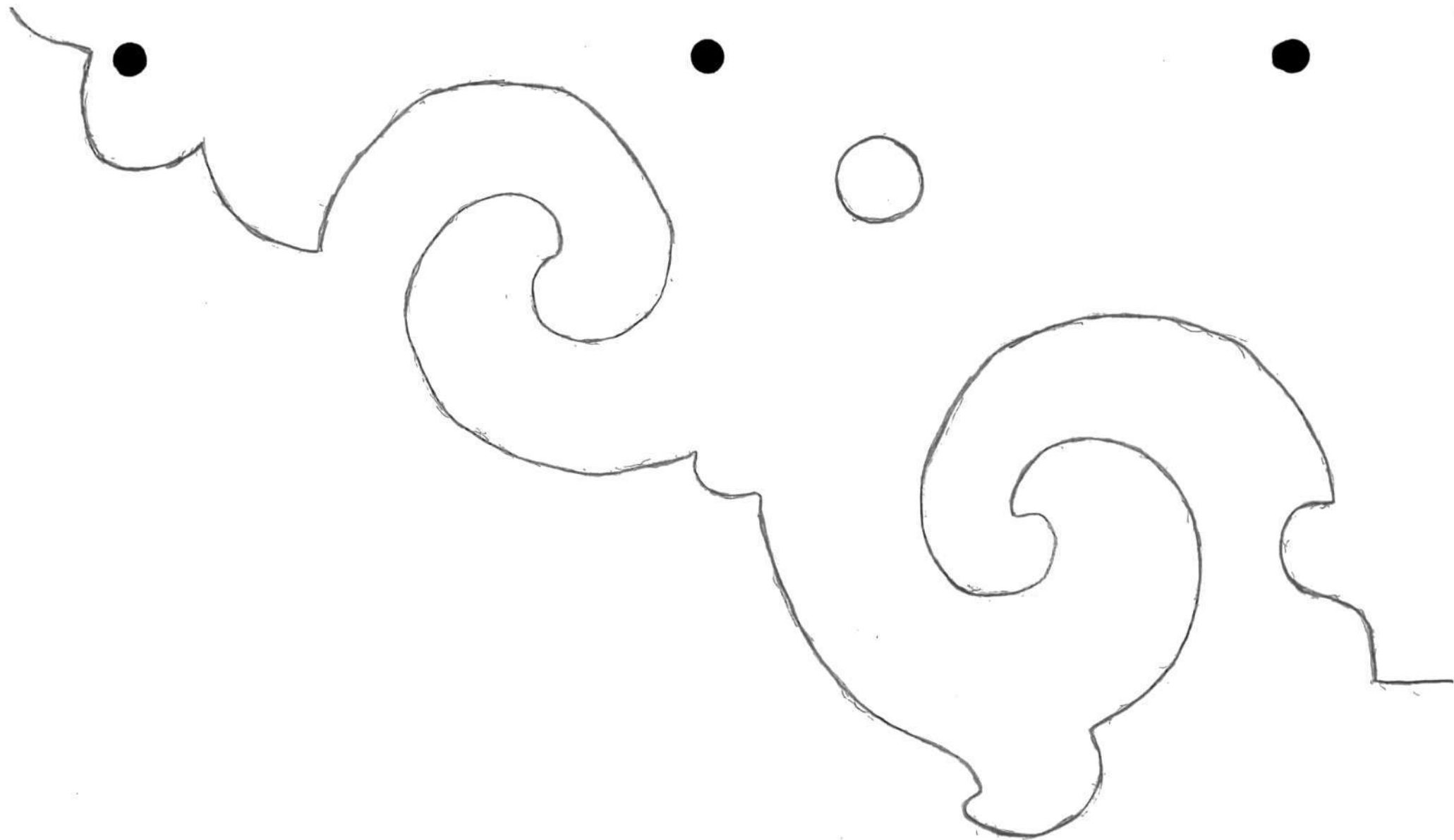
Passage Cornice

14 May '10

3/5 Claremont H0-798  
Moulding Profiles

KMS  
14 May '10



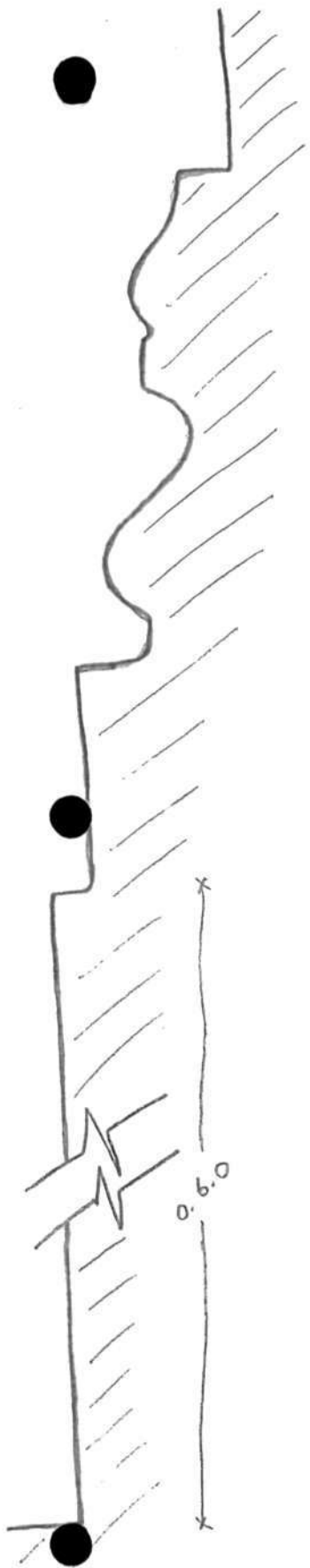


4/5 Claremont HO-798  
Stair Bracket

KMS  
14 May '10

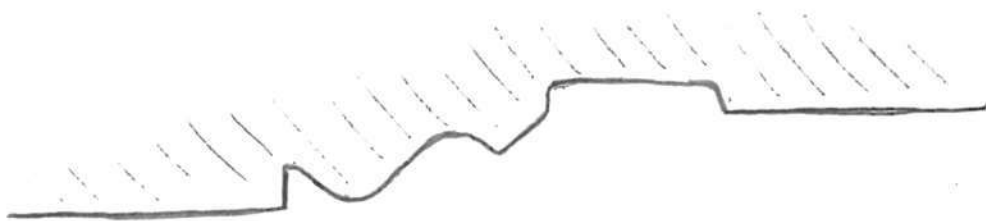
5/5 Claremont HO-798  
Moulding Profiles

KMS  
11 Jun 2010



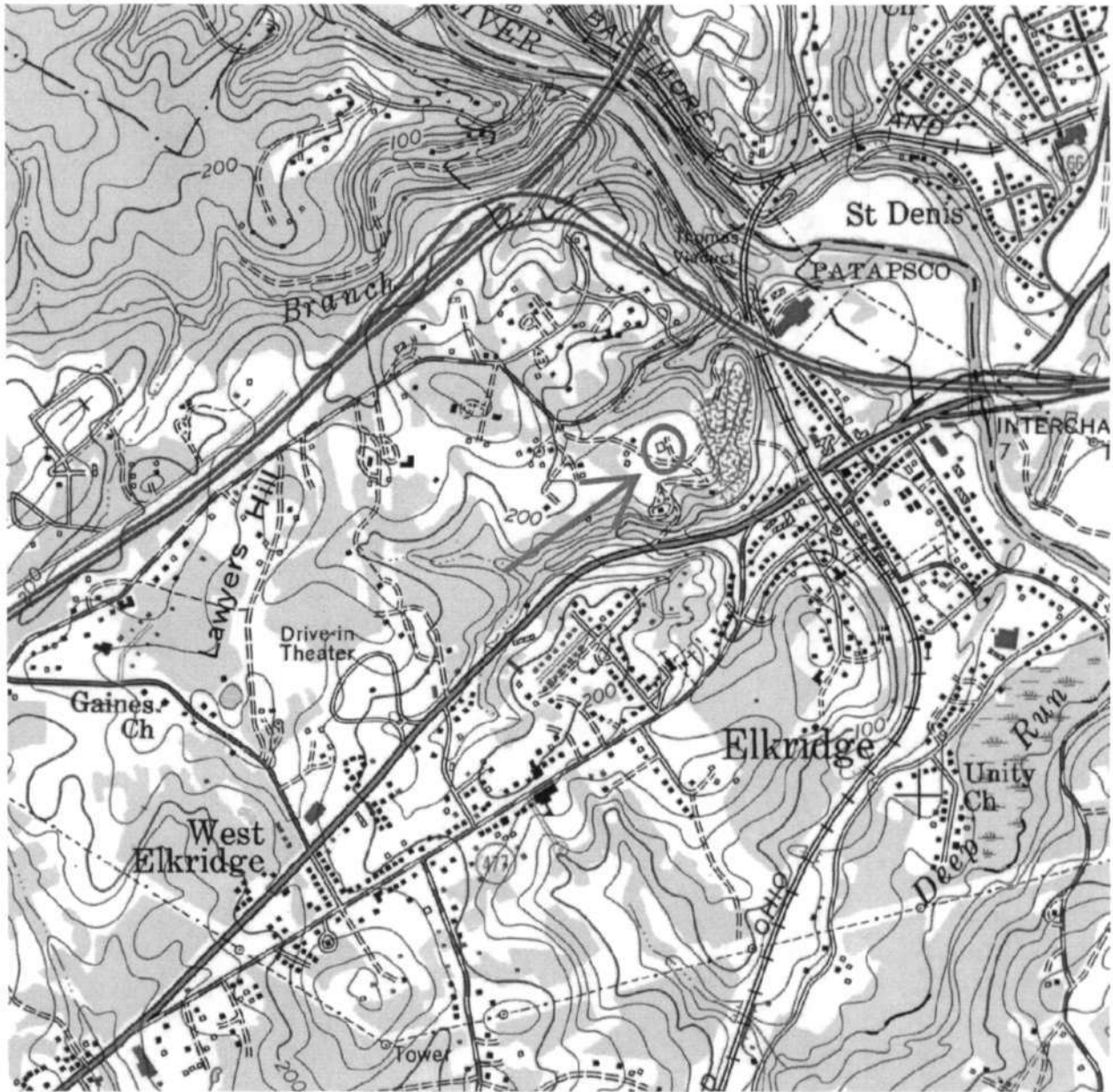
Baseboard

Door Panel Mould





HO-798  
"Claremont"  
6005 North Meyer Drive  
Martenet's Map of Howard County, 1860.



HO-798  
"Claremont"  
6005 North Meyer Drive  
Relay quad

HO-798  
"Claremont"  
6051 Lawyer's Hill Road  
Howard County, Maryland  
Ken Short, photographer

Photo Log

Nikon D-70 camera  
HP Premium Plus paper  
HP Gray Photo print cartridge

HO-0798\_2010-05-14\_01  
East elevation

HO-0798\_2010-05-14\_02  
North & west elevations

HO-0798\_2010-05-14\_03  
West & south elevations

HO-0798\_2010-05-14\_04  
Chimney detail

HO-0798\_2010-05-14\_05  
Passage, view west

HO-0798\_2010-05-14\_06  
Newel post

HO-0798\_2010-05-14\_07  
Passage ceiling medallion

HO-0798\_2010-05-14\_08  
Passage, heating grate

HO-0798\_2010-05-14\_09  
Passage cornice

HO-0798\_2010-05-14\_10  
Passage bell pull

HO-0798\_2010-05-14\_11  
Northeast room, view northwest

HO-0798\_2010-05-14\_12  
Northeast room, ceiling medallion

HO-0798\_2010-05-14\_13  
Northeast room, mantel

HO-0798\_2010-05-14\_14  
Northeast room mantel, detail

HO-0798\_2010-05-14\_15  
Northeast room, bell pull

HO-0798\_2010-05-14\_16  
Northeast room, safe in closet

HO-0798\_2010-05-14\_17  
Southeast room, view southwest

HO-0798\_2010-05-14\_18  
Southeast room mantel

HO-0798\_2010-05-14\_19  
Southwest room mantel

HO-0798\_2010-05-14\_20  
Southwest room ceiling medallion

HO-0798\_2010-05-14\_21  
Rear passage stairway

HO-0798\_2010-05-14\_22  
Southwest chamber, view southeast

HO-0798\_2010-05-14\_23

Basement, part of furnace system

HO-0798\_2010-05-14\_24

Summer kitchen, south & east elevations



LONG FENCE

LONG FENCE

LONG FENCE

LONG FENCE

LONG FENCE

LONG FENCE

LONG FENCE

LONG FENCE

LONG FENCE

HO-798

'Claremont'

6051 Lawyers Hill Road

Howard County, Maryland

Ken Short

2010-05-14

MD SHPO

East elevation

1 of 24



H0-798

'Claremont'

6051 Lawyer's Hill Road

Howard County, Maryland

Ken Short

2010-05-14

MD SHPO

North + west elevations

2 of 24



40-798

'Claremont'

6051 Lawyer's Hill Road

Howard County, Maryland

Ken Short

2010-05-14

MD SHPO

West + south elevations

3 of 24



HO-798

'Claremont'

6051 Lawyer's Hill Road

Howard County, Maryland

Ken Short

2010-05-14

MD SHPO

Chimney detail

4 of 24



HO-798

'Claremont'

6051 Lawyer's Hill Road

Howard County, Maryland

Ken Short

2010-05-14

MD SHPO

Passage, view west

5 of 24



HO-798

'Claremont'

6051 Lawyer's Hill Road

Howard County, Maryland

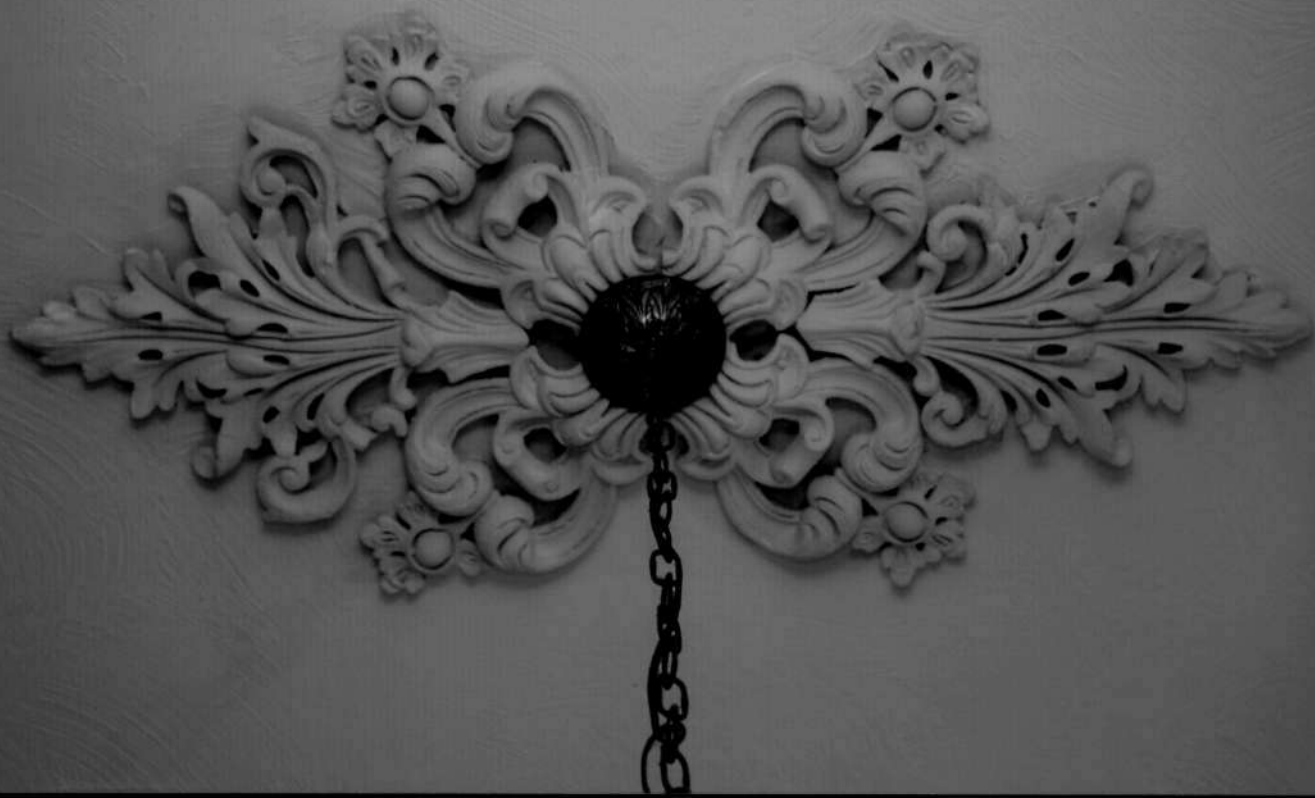
Ken Short

2010-05-14

MD SHPO

Newel post

6 of 24



HO-798

'Claremont'

6051 Lawyer's Hill Road

Howard County, Maryland

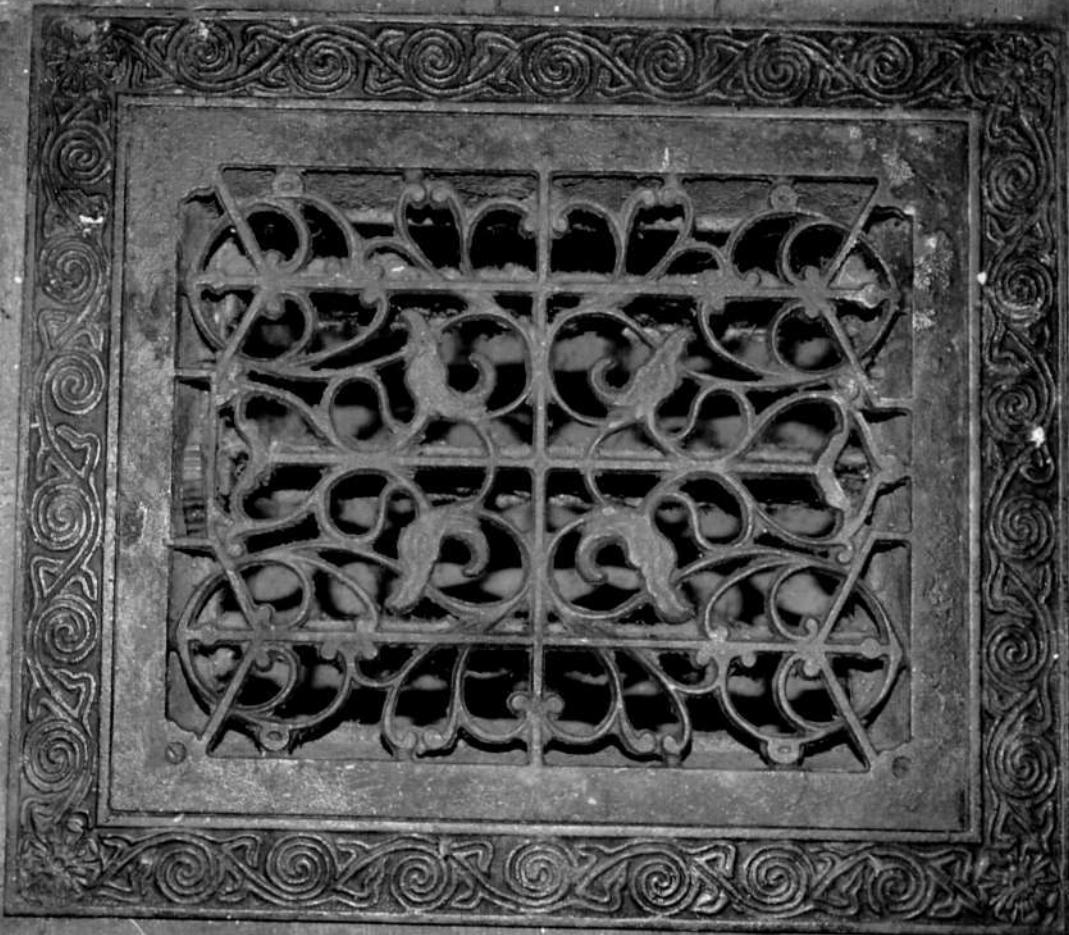
Ken Short

2010-05-14

MD SHPO

Passage ceiling medallion

7 of 24



HO-798

'Claremont'

6051 Lawyer's Hill Road

Howard County, Maryland

Ken Short

2010-05-14

MD SHPO

Passage, heating grate

8 of 24



HO-798

'Claremont'

6051 Lawyer's Hill Road

Howard County, Maryland

Ken Short

2010-05-14

MD SHPO

Passage cornice

9 of 24



HO-798

'Claremont'

6051 Lawyer's Hill Road

Howard County, Maryland

Ken Short

2010-05-14

MD SHPO

Passage bell pull

10 of 24



H0-798

'Claremont'

6051 Lawyer's Hill Road

Howard County, Maryland

Ken Short

2010-05-14

MD SHPO

Northeast room, view northwest

11 of 24



HO-798

'Claremont'

6051 Lawyers Hill Road

Howard County, Maryland

Ken Short

2010-05-14

MD SHPO

Northeast room, ceiling medallion

12 of 24



HO-7998

'Claremont'

6051 Lawyer's Hill Road

Howard County, Maryland

Ken Short

2010-05-14

MD SHPO

Northeast room, mantel

13 of 24



HO-798

'Claremont'

6051 Lawyer's Hill Road

Howard County, Maryland

Ken Short

2010-05-14

MD SHPO

Northeast room mantel, detail

14 of 24



H0-798

'Claremont'

6051 Lawyer's Hill Road

Howard County, Maryland

Ken Short

2010-05-14

MD SHPO

Northeast room, bell pull

15 of 24

Miller's Safe & Iron Works



HO-798

'Claremont'

6051 Lawyer's Hill Road

Howard County, Maryland

Ken Short

2010-05-14

MD SHPO

Northeast room, safe in closet

16 of 24



H0-798

'Claremont'

6051 Lawyer's Hill Road

Howard County, Maryland

Ken Short

2010-05-14

MD SHPO

Southeast room, view southwest

17 of 24



HO-7998

'Claremont'

6051 Lawyer's Hill Road

Howard County, Maryland

Ken Short

2010-05-14

MD SHPO

Southeast room mantel

18 of 24



HD-798

'Claremont'

6051 Lawyer's Hill Road

Howard County, Maryland

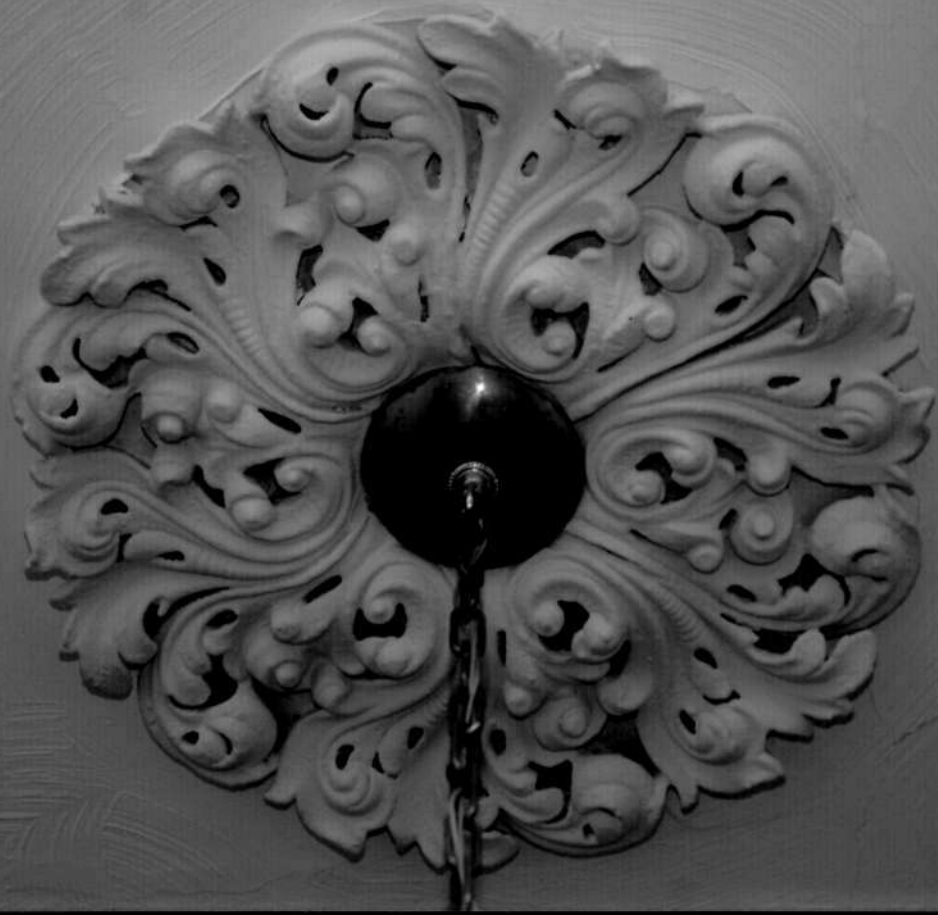
Ken Short

2010-05-14

MD SHPO

Southwest room mantel

19 of 24



HO-798

'Claremont'

6051 Lawyer's Hill Road

Howard County, Maryland

Ken Short

2010-05-14

MD SHPO

Southwest room ceiling medallion

20 of 24



HO-798

'Claremont'

6051 Lawyer's Hill Road

Howard County, Maryland

Ken Short

2010-05-14

MD SHPO

Rear passage stairway

21 of 24



H0-798

'Claremont'

6051 Lawyer's Hill Road

Howard County, Maryland

Ken Short

2010-05-14

MD SHPO

Southwest chamber, view southeast

22 of 24



HD-798

'Claremont'

6051 Lawyer's Hill Road

Howard County, Maryland

Ken Short

2010-05-14

MD SHPO

Basement, part of furnace system

23 of 24





HO-798

'Claremont'

6051 Lawyer's Hill Road

Howard County, Maryland

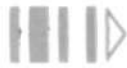
Ken Short

2010-05-14

MD SHPO

Summer Kitchen, south + east elevations

24 of 24



HO-798, Claremont  
6051 Lawyers Hill Road, Elkridge  
Howard County  
1858  
Private

#### CAPSULE SUMMARY

Claremont rests upon a grassy promontory looking east over the railroad tracks in the distance towards the lights of Baltimore. The house sits in a small clearing but the rest of the 43 acres that now make up the property is heavily wooded and characterized by moderate to steep slopes. The driveway now approaches the house from the west but judging by the orientation of the house and a map from 1878, the driveway originally climbed the hill from the east from a point close to the Thomas Viaduct. The 2 ½ story frame house is five bays wide with a parallel double gabled roof. Two large four-flue chimneys rise from the center of the ridge of each gabled section. A wide porch, large, framed windows, and an elaborate cornice treatment show an Italianate influence. Asbestos siding, an asphalt shingle roof, and aluminum awnings over some of the windows are the only modern alterations to the building. A one story, pyramid roofed, brick building behind the house was probably originally a summer kitchen and is the only remaining outbuilding associated with Claremont.

Claremont is significant under criteria C in the area of architecture and criteria B for its association with Dr. James Hall. The high-style Italianate mansion of Dr. James Hall is in almost original condition and is an excellent example of an architect-designed mid-19<sup>th</sup> century Italianate dwelling. The house is also significant as the home of Dr. James Hall, a high-ranking member of the Maryland Colonization Society who was instrumental in the groups colonization efforts in Liberia.

# Maryland Historical Trust

## Maryland Inventory of Historic Properties Form

Inventory No. HO-798

### 1. Name of Property (indicate preferred name)

historic Claremont  
 other

### 2. Location

street and number 6051 Lawyers Hill Road not for publication  
 city, town Elkridge vicinity  
 county Howard

### 3. Owner of Property (give names and mailing addresses of all owners)

name Claremont LLC, c/o Alan Meyer  
 street and number 11046 Dorsch Farm Rd. telephone  
 city, town Ellicott City state MD zip code 21042

### 4. Location of Legal Description

courthouse, registry of deeds, etc. Howard County Courthouse tax map and parcel: Map 32, P24  
 city, town Ellicott City liber 5307 folio 448

### 5. Primary Location of Additional Data

- Contributing Resource in National Register District
- Contributing Resource in Local Historic District
- Determined Eligible for the National Register/Maryland Register
- Determined Ineligible for the National Register/Maryland Register
- Recorded by HABS/HAER
- Historic Structure Report or Research Report
- Other

### 6. Classification

Category	Ownership	Current Function	Resource Count	
			Contributing	Noncontributing
<input type="checkbox"/> district	<input type="checkbox"/> public	<input type="checkbox"/> agriculture		
<input checked="" type="checkbox"/> building(s)	<input checked="" type="checkbox"/> private	<input type="checkbox"/> commerce/trade	2	
<input type="checkbox"/> structure	<input type="checkbox"/> both	<input type="checkbox"/> defense		
<input type="checkbox"/> site		<input checked="" type="checkbox"/> domestic		
<input type="checkbox"/> object		<input type="checkbox"/> education		
		<input type="checkbox"/> funerary	2	0
		<input type="checkbox"/> government		
		<input type="checkbox"/> health care		
		<input type="checkbox"/> industry		
		<input type="checkbox"/> landscape		
		<input type="checkbox"/> recreation/culture		
		<input type="checkbox"/> religion		
		<input type="checkbox"/> social		
		<input type="checkbox"/> transportation		
		<input type="checkbox"/> work in progress		
		<input type="checkbox"/> unknown		
		<input type="checkbox"/> vacant/not in use		
		<input type="checkbox"/> other:		
			<b>Number of Contributing Resources previously listed in the Inventory</b>	

## 7. Description

Inventory No. HO-798

### Condition

<input checked="" type="checkbox"/> excellent	<input type="checkbox"/> deteriorated
<input type="checkbox"/> good	<input type="checkbox"/> ruins
<input type="checkbox"/> fair	<input type="checkbox"/> altered

Prepare both a one paragraph summary and a comprehensive description of the resource and its various elements as it exists today.

Claremont emerges suddenly from the dense forest on a warm August day. Large and ornately detailed, her sudden appearance in the clearing takes the casual visitor by surprise. The approach is all wrong now with the driveway conducting visitors to the house from the rear giving the visitor an unobstructed view of the private service area. But Claremont puts her best face forward as you move around to the east façade and she nearly takes your breath away with her attention to detail. The area around Lawyers Hill has changed dramatically in the last 50 years; cars rush by on Route 1 down the hill to the south of the house and on I-95 to the north, a dramatic increase in residential development lends the surrounding area a crowded, rushed atmosphere entirely foreign to the houses on Lawyers Hill, and within the last 15 years, modern subdivisions have come to Lawyers Hill itself slowly nibbling away at the forests and hills that have stood for hundreds of years.

Claremont rests upon a grassy promontory looking east over the railroad tracks in the distance towards the lights of Baltimore. The house sits in a small clearing but the rest of the 43 acres that now make up the property is heavily wooded and characterized by moderate to steep slopes. The driveway now approaches the house from the west but judging by the orientation of the house and a map from 1878, the driveway originally climbed the hill from the east from a point close to the Thomas Viaduct. The 2 ½ story frame house is five bays wide with a parallel double gabled roof. Two large four-flue chimneys rise from the center of the ridge of each gabled section. A wide porch, large, framed windows, and an elaborate cornice treatment show an Italianate influence. Asbestos siding, an asphalt shingle roof, and aluminum awnings over some of the windows are the only modern alterations to the building. A one story, pyramid roofed, brick building behind the house was probably originally a summer kitchen and is the only remaining outbuilding associated with Claremont. To the southeast of the house at the edge of the clearing and a steep drop off is the remains of an old cistern and water pump station. According to the current owner, up until the mid-20th century there were several other outbuildings, including at least one barn and one or two tenant houses, located to the southwest of the house, but these are no longer standing and their appearance is unknown.

The principle façade of Claremont is the east façade and it was clearly built to impress. On the first floor the central entry is flanked by three light sidelights and topped by a three light transom. The double doors each feature three molded panels, rectangular in shape but with clipped, concave corners. There are a total of four windows on the first story, two on either side of the door. All four of these windows are very large floor-to-ceiling 6/9 double hung sash. The second story has five windows vertically aligned above the first story openings. These windows are scaled down to 6/6 double hung sash. On the third story, one 6/6 window is located in each gable and a central gabled dormer is located between the two parallel gables. A three by three casement window is located in the dormer. All of the windows, with the exception of the dormer, are framed and eared. A wide, open eave overhang is supported by elaborate cornice brackets. Separating the brackets are molded panels slanted to follow the rake of the roof. A wide single story wrap around porch extends across the front façade, the south façade and half of the west façade. The slightly elevated wood floor rests on brick piers. Square wood columns decorated with the suggestion of molded panels support the porch and are paired at the entry. Smaller versions of the cornice brackets decorate the porch cornice.

The south side façade is two bays deep. On the first story, there are two paired, 4/6 floor to ceiling double hung windows. The second story has two paired, 4/4 windows vertically aligned above the first story openings. On the third story, two full arched wall dormers hold casement windows. This façade features the same decorative details – window trim, cornice brackets and panels, and porch – found on the front (east) façade.

The north side façade is three bays deep. On the first floor, the bay closest to the front of the house features a bay window with lower panels matching those on the front door and four 4/4 double hung windows. Very decorative scroll brackets decorate the top of the bay window. A 6/6 double hung window and paired 4/4 double hung windows complete the first story. The second story features two paired 4/4 double hung windows separated in the middle by a 6/6 window. The third story features two full arched wall dormers with arched casement windows. This façade also has the same window trim and cornice brackets and panels that the front and south facades have.

# Maryland Historical Trust

## Maryland Inventory of Historic Properties Form

Inventory No. HO-798

Name Claremont

Continuation Sheet

Number 7 Page 1

---

On the rear (west) façade, the two gabled sections are very distinct. The south-most gabled section (on the right as you stand facing the rear façade) features a 6/9 floor to ceiling window on the first floor, a 6/6 window vertically aligned above on the second floor and an arched 6/6 window in the gable. A 4-panel door with a three light transom is located on the first floor abutting the other gabled section. A 6/6 window is aligned above the door. The windows and doors in this gabled section are framed the same way as the windows on the other façades. The north-most gabled section extends approximately 7 feet further to the rear than the other gabled section does. This north-most gabled section (the one on the left as you stand facing the rear façade) has a 6/6 window on the far left of the first story and a 4-panel door in approximately the center of the first story. A 6/6 window on the second story is vertically aligned above the door and another 6/6 window in the gable is vertically aligned above. On the south façade of this gabled section, a door leads onto the porch and a 6/6 window is vertically aligned above. The porch wraps around only the right gabled section of this façade. Bulkhead access to the basement is located on the left gabled section. It is interesting to note that the windows on the west façade of the left gabled section are not framed like the other windows in the house, having instead a simple beaded trim. This lack of decorative detail implies that this rear extension of the gabled section contains service space rather than public or family space. The elaborate cornice treatment, however, does continue all the way around this façade.

The interior of Claremont is at least as impressive as the exterior and much original material remains intact. The floor plan of the house indicates that Claremont was obviously built for a wealthy family with slaves or domestic servants. The center hall plan double pile house features a back stair, narrow halls, and small chambers in the rear wing that were clearly designed for servant use and entirely separate from the public and family space of the house. The center hall, double pile plan is repeated on the second and third floors and in the cellar with service space found in the rear wing (essentially just a rear extension of the north gabled section). The front door enters into a wide, gracious center hall that features a grand stair rising along the right hand side to a landing above. There are five doors opening off of the hall. Towards the front of the right side of the hall one doorway leads into the dining room while immediately across from it on the left side another doorway leads into the formal parlor. Towards the rear of the left side of the hall, another doorway leads into the less formal family parlor. A door with a three light transom on the back wall of the hall leads onto the porch while another door beside it and behind the stair leads into the service wing. A storage closet is located beneath the stair. The two parlors communicate directly via a doorway between the two and the dining room communicates directly with the service hall and kitchen via a doorway to the left of the fireplace. The dining room also features a locked storage closet to the right of the fireplace.

These three primary rooms and the central passage are all detailed the same way. Door and window architraves are unusual with a flat panel look to the architrave that is set off by projecting pyramid corner blocks. The doors themselves are six panel doors with an ogee and beveled fillet molding. Elaborate plaster crown molding and plaster ceiling medallions are found in each of the four spaces. The wide baseboard throughout features an Italianate cap molding with an ogee and beveled fillet. The central passage has a chair rail with wainscoting below. All three rooms feature marble mantles. The ones in the dining room and formal parlor are both arched with carved floral designs. The one in the dining room is white while the one in the parlor is a beautiful jasper color. The mantle in the family parlor is less ornate with uncarved pilasters, plinths and frieze but is made out of a beautiful black marble with white ribbons throughout. All three rooms feature large floor to ceiling windows on two walls that provide ample natural light and the high ceilings throughout the first floor lend the house a very grand scale.

A door at the back of the central hall leads to the service area of the house. The door opens into a very narrow hall that has one exterior door leading onto the porch to the left and a door leading into the kitchen on the right. A narrow winder stair rises from this hall to the second floor and descends to the basement. The kitchen has been heavily redone but is a very large room. There used to be a large fireplace located on the back wall that is now concealed behind a refrigerator and a large freezer. A door to the exterior is found to the left of the fireplace. Another door leads from the kitchen into a service hall that leads to the dining room. Another room opens off of this service hall. It is now a bathroom but may originally have been a pantry. There is an interesting

Maryland Historical Trust  
Maryland Inventory of  
Historic Properties Form

Inventory No. HO-798

Name Claremont

Continuation Sheet

Number 7 Page 2

cupboard located well above head height in this service hall the function of which is unknown.

The hierarchy of space between the primary public and family spaces of the house and this service space is clear from the architectural detail. The door and window architraves in the service space have a double flat architrave with a bead. The door between the dining room and the service hall features fine detailing with the elaborate architrave and molded panels on the dining room side of the door and the plainer architrave and flat panels on the service side. The baseboard is also extremely plain. The tight winder stair has no handrail and no natural light and the halls are very narrow.

The main stair rises to a landing, turns and climbs five more steps to the main second floor. A doorway off of the landing connects the service area with the main house. Like the main first floor, the second floor has a wide central hall with two rooms on each side. Every room has a closet and a fireplace with a simple white/gray marble mantle. All of the rooms are well lit with natural light and there is a window in the central hall and one in the landing of the stair. One of the rooms was converted into an office and paneled with wood paneling in the mid-20th century. The baseboard from the first floor continues up the stair and throughout the main second floor, but the crown molding is much simpler on the second floor. The doors are 4-panel with ogee and beveled fillet molding and the door and window architraves are simpler than the first floor with an ogee and beveled fillet molding, a bead, and no corner blocks.

The service area on the second floor consists of the winder stair, which continues up one more floor, a narrow hall, a small closet, and two small chambers. Today one of these chambers is a half bath while the larger chamber is a very spacious full bath. Both of these chambers have windows; the one in the smaller chamber is a modest sized 6/6 while the one in the larger chamber has a paired 4/4 configuration. Window and door trim on this floor is even plainer than that found in the first floor service space with only a single flat architrave and a bead. The baseboard is plain and square with a quarter round molding at the base. The smaller chamber does not have the high ceiling that the rest of the house has, but the larger chamber does. The original function of these rooms is unclear. The smaller chamber was definitely not heated but evidence for heat in the larger chamber has been obscured by the conversion of the space into a bathroom and the tiling of the walls. It is also possible that the larger chamber could have communicated directly with one of the bedrooms of the main house – the two rooms share a wall. But the service room wall has been tiled while the bedroom wall has been paneled and it is not possible to see any patching. It would not have been uncommon for a room in the service wing to connect directly to a private family room – the service room could have accommodated a dressing room or a nursery or it could have housed a domestic servant with close ties to the family – a nurse or tutor perhaps.

From the second floor, the main stair climbs to a landing, turns, and climbs several more stairs to the third floor. A door off of the landing leads to the service stair. The main stair is just as finely detailed – same stair end decoration, turned balusters, carved handrail and molded baseboard - at the third story as it is at the first. The entire third story is finished with a central passage, four large rooms, and two closets. The walls and ceiling are all plastered. On the right side of the hall there are two large chambers. On the left side of the hall are two chambers separated by two closets. One of the closets is small and accessed off of the hall. The other closet is quite large and is only accessible from inside one of the chambers. The closet has an interesting narrow rectangular window opening just above head height that opens into the larger chamber. This closet seems to be original and the trim on the window is the same simple beaded trim found on the other windows on the third floor. None of these chambers shows evidence of having been heated originally except via the chimney stacks rising from the lower floors. All of the rooms do abut one of the chimneys. Door and window trim on this floor matches that on the first floor in the service area with a double flat architrave and a bead. The baseboard is plain and square. The doors all have four flat panels. All of the rooms and the passage are well lit; a total of 10 windows light the third story.

The service stair terminates at the landing several steps below the third story. There is not much to the third story of the service area. The stair rises to a very small, cramped landing; a door off of this landing leads to the landing of the main stair. Also located

# Maryland Historical Trust

## Maryland Inventory of Historic Properties Form

Inventory No. HO-798

Name Claremont

Continuation Sheet

Number 7 Page 3

off of the service landing is another small closet like space with a ceiling only approximately 4 ½' high. What is odd about this space is that it has a full size 12 light casement window on its north wall which looks into the servants chamber on the second floor. The ceiling of this closet is the same height as the ceiling of this second floor chamber. Perhaps this window was intended to allow natural light from the windows in the second floor chamber into this dark third floor space – this interior window is the only one in this third story service area.

The cellar has the same center hall plan as the other floors of the house. It is accessible via a tight winder stair out of the first floor service area and an exterior access on the rear (west) façade of the north-most gabled section of the house. The basement has a brick floor throughout, whitewashed and (in some cases) plastered walls and had a plastered ceiling. The plastered ceiling appears to have been ripped out to install modern systems and insulation. All visible framing members appear to be sash sawn and the visible nails are all cut. At some point, there appears to have been a fairly extensive winemaking operation in the cellar. One of the rooms has a door with a lock on it and inside a large amount of wine making paraphernalia including casks, wine racks, and large and small bottles. A small chamber was built some time after construction of the house. By bricking up the doorway between two of the rooms and enclosing a corner of one of the rooms, a small chamber (approximately 8' x 8') was created. There are no full size doors into this chamber. The only access is an approximately 2' x 2' arched opening near the floor in one of the rooms. The floor of the chamber is littered with bottles and the floor and walls are covered with a web-like white mold. The initial conclusion is that this chamber is somehow related to the winemaking operation since the only access to the chamber is through the arched opening in the room with all the wine making material. But what function this chamber may have served is a mystery.

Also found in the cellar is evidence of the service bell system that used to run throughout the house. The plan of the house with its distinct public/family spaces and service spaces makes it clear that 1) the house was designed for a family that relied on domestic servants and 2) those servants and the functions they performed were to be kept as invisible as possible to the family and guests. A service bell system facilitated this illusion of invisibility by allowing the servants to stay in the service section of the house until they were needed. Each of the rooms on the first and second floor was probably fitted with bell pulls that were operated by a crank. One of these cranks remains (see photo) in the dining room and a ghost of another is visible in the formal parlor. These cranks were probably present in the family parlor and the four second story rooms as well. The crank pulled a wire that ran down to the cellar through zinc tubing in the walls. The wires ran along the joists, turning corners by means of a system of rocker arms, until they reached a place below the service wing above which a main board mounting a series of bells was hung. Each crank rang a different bell that was distinctly pitched thereby notifying the servants which room they should report to. The bells were probably hung in the kitchen or service passage. Several of the rockers arms with scraps of wire attached remain in the cellar (see photo). An identical service bell system was documented at Blandair, an upper class farmhouse also built in the late 1850's in Columbia, Maryland. (1)

The only remaining outbuilding at Claremont is a one story brick building that may predate the house. The building is located approximately 75 feet behind the main house. Laid in 5:1 common bond, the building is sheltered by a pyramidal hipped roof that is pierced by a central chimney at the peak. A corbelled brick cornice runs around the entire building. The south façade contains the only door into the building and a casement window. The east and west facades each contain two casement windows and the north façade contains one. A large patch is evident on the east wall of the building. The patch begins at ground level and runs all the way through the cornice and is a uniform width of 4-5' wide. It is centered in the wall. The interior of this building is now divided into two rooms. The door, which consists of four flat panels and is hung on cast 5-knuckle butt hinges, opens into a narrow room containing a fireplace. The firebox is wide, approximately four feet, but not particularly deep. It has a cast eye for a swinging fireplace crane but the crane is missing. The room that the fireplace opens into is very narrow, however, approximately only 6' wide. The doorway into the other room is located to the right of the fireplace and is cased in untrimmed planks. There is no evidence that a door ever hung here. There is a hole for a stove flue in the back of the chimney stack. The floor of slightly more than half of this room, as well as the entire floor in the other room is brick. But a portion of the floor in this back room is

# Maryland Historical Trust

## Maryland Inventory of Historic Properties Form

Inventory No. HO-798

Name Claremont

Continuation Sheet

Number 7 Page 4

---

wood plank and in fact, most of this flooring turns out to be hinged double doors that open to reveal a root cellar below. The walls in this building are plastered and the window trim is very plain with a simple bead.

*This building seems to have functioned as a kitchen but, while it does appear as if the fireplace in this building was designed for cooking, the narrow width of the room that it opens into would not have lent itself to being a good workspace. Additionally, the main house seems to have had a large kitchen with a cooking fireplace in the service wing. Perhaps this building was used for cooking only in the summer in an attempt to keep the heat out of the main house. It is also possible that this building predates the main house, however, and was a detached kitchen for an earlier dwelling. The large patch on the east wall of the building seems to conform quite nicely to the projected size and location of an end chimney and as an undivided space, the building would have contained a good size work room. The location of the door also seems to argue that the building was constructed to serve another house. If it had been built at the same time as the main house as a service building, the door would have been placed on the east wall to allow for a direct line of circulation between the two buildings. As it is, a servant traveling from the main house to the detached kitchen would have to walk almost the entire way around the kitchen building before reaching the door. Additionally, the corbelled brick cornice and cast hinges on the door are usually features associated with a construction date of before 1850 and we know that the main house was not constructed until 1858.*

(1) Reinhart, Thomas A. A STUDY OF BLANDAIR FARM IN HOWARD COUNTY, MARYLAND. A thesis submitted to the faculty of Columbian College of Arts and Sciences of The George Washington University in partial satisfaction of the requirements for the degree of Master of Arts, January 20, 2003. On file at the Maryland Historical Trust and the Howard County Historical Society.

## 8. Significance

Inventory No. HO-798

Period	Areas of Significance	Check and justify below		
<input type="checkbox"/> 1600-1699	<input type="checkbox"/> agriculture	<input type="checkbox"/> economics	<input type="checkbox"/> health/medicine	<input type="checkbox"/> performing arts
<input type="checkbox"/> 1700-1799	<input type="checkbox"/> archeology	<input type="checkbox"/> education	<input type="checkbox"/> industry	<input type="checkbox"/> philosophy
<input checked="" type="checkbox"/> 1800-1899	<input checked="" type="checkbox"/> architecture	<input type="checkbox"/> engineering	<input type="checkbox"/> invention	<input type="checkbox"/> politics/government
<input type="checkbox"/> 1900-1999	<input type="checkbox"/> art	<input type="checkbox"/> entertainment/ recreation	<input type="checkbox"/> landscape architecture	<input type="checkbox"/> religion
<input type="checkbox"/> 2000-	<input type="checkbox"/> commerce	<input type="checkbox"/> ethnic heritage	<input type="checkbox"/> law	<input type="checkbox"/> science
	<input type="checkbox"/> communications	<input type="checkbox"/> exploration/ settlement	<input type="checkbox"/> literature	<input type="checkbox"/> social history
	<input type="checkbox"/> community planning		<input type="checkbox"/> maritime industry	<input type="checkbox"/> transportation
	<input type="checkbox"/> conservation		<input type="checkbox"/> military	<input type="checkbox"/> other:

**Specific dates** 1858, 1858-1889 **Architect/Builder** Andrews, Arch., Selby, Miller, Bui

**Construction dates** 1858

Evaluation for:

National Register  Maryland Register  not evaluated

Prepare a one-paragraph summary statement of significance addressing applicable criteria, followed by a narrative discussion of the history of the resource and its context. (For compliance reports, complete evaluation on a DOE Form - see manual.)

Claremont is significant under criteria C in the area of architecture and criteria B for its association with Dr. James Hall. The high-style Italianate mansion of Dr. James Hall is in almost original condition and is an excellent example of an architect-designed mid-19th century Italianate dwelling. The house is also significant as the home of Dr. James Hall, a high-ranking member of the Maryland Colonization Society who was instrumental in the groups colonization efforts in Liberia.

More is known about the construction details of Claremont than is usual among the vast majority of mid-19th century houses. A chance find in the large newel post proved a treasure trove of information. A flat board measuring approximately 4" by 18" contains the following inscription written in ink: "This house owned by Dr. J. Hall of Baltimore. Built by John Lee Selby, Carroll Co. and John S. Miller, Balt. Co. Painted by John Bowerson, Balt. Co. Collums [on Anchors?] executed by John H. Pugsley, Baltimore. Architect R. Snowden Andrews, Baltimore. Aug. 1858, finished Oct. 1858." (1) The board was found inside the newel post which is not an uncommon repository for such artifacts. The value of this board and the information it contains cannot be understated. The owners name, date of construction and architects name are important but could have easily been determined from other sources. What is truly unique are the names of the builders, the painter, and the carpenter, information that is usually lost to history. Research on these individuals could provide interesting insights into the class of men who were doing the actual physical construction of the houses in central Maryland in the mid-19th century. Further research on R. Snowden Andrews would also be interesting and it may be that his hand drawn blueprints for Claremont exist somewhere.

Dr. James Hall purchased the 38 1/2 acres on which he built Claremont in November of 1858 for \$10,500. The 'finished' date on the board found in the newel post is October 1858 meaning that Hall must have had a contract on the property but did not actually take possession of the deed until his house was completed. This was not an uncommon practice in land transactions in the mid-19th century (2). Hall purchased the property from Daniel Foley who was a court appointed trustee authorized to dispose of the land as a result of an equity case between Grayson Eichelberger and Margaret Woodsides. The details of this equity case are unknown but Margaret's husband John bought the 38 1/2 acre parcel in June 1851 from Isaac Todhunter and Elizabeth Todhunter, widow of Joseph Todhunter. The Todhunters situation is interesting because George M. Gill sold the property to Isaac Todhunter in trust for Elizabeth only and specified that it was so that she would have her own land and source of support completely separate from her husband, Joseph Todhunter. It is unclear what the relationship between Isaac and Elizabeth or George and Elizabeth was. George Gill was obviously very concerned about her well-being and his concern seems to have been valid. The Todhunters owned the property for only three years and during that time mortgaged it back to Gill twice. When they couldn't pay back the mortgage, they sold the property to Woodsides. (3)

The deed from Gill to the Todhunters provides an extensive description of the property and describes it as "the whole of the property as now possessed and recently occupied by the said George M. Gill as a country residence." (4) This confirms that there was an earlier residence on the property that predated Claremont. Since it was described as "a country residence" it was probably a

# Maryland Historical Trust

## Maryland Inventory of Historic Properties Form

Inventory No HO-798

Name Claremont

Continuation Sheet

Number 8 Page 1

relatively fine dwelling and it is entirely possible that the existing brick kitchen behind Claremont was constructed to serve this earlier dwelling. If so, it seems likely given the location of the door on the kitchen that the earlier house was located to the south of the kitchen building, perhaps just on the other side of the existing driveway. Dr. Hall may have used the house as a tenant house or he may have had it demolished before constructing Claremont, no evidence either way has been found.

Claremont is shown on both the 1860 Martenet map and the 1878 Hopkins map of Howard County. On both maps the house is labeled "Dr. Jas. Hall." The 1860 map does not show another dwelling located to the southwest of Claremont although it does show another dwelling, labeled "B. Shultz," located just to the northeast of the house. The 1878 map shows the driveway approaching Claremont from the east and the other house on the 1860 map is no longer shown. There is another house, labeled "Robinson," located west of Claremont on the 1878 map. It is believed that this house is still standing and is a two-story part timber frame, part log dwelling located close to the current entrance to the driveway. This house has not been inventoried per the wishes of the current owner.

The 1860 map does contain one other important piece of evidence. Claremont is actually pictured on the border of the Martenet map and is labeled "Claremont" above the picture and "Home of Dr. Jas. Hall" below. A three quarter view of the southeast elevation of the house is shown and looks almost identical to the way the house looks today. The only visible alteration (in addition of course to the asbestos siding and aluminum awnings) is that a balustrade runs around the roof of the porch in the picture on the Martenet map. The balustrade appears to have short square posts directly above the porch support posts below and a pierced, flat balustrade running between them. The picture also shows a tall windmill behind the house which is no longer standing, if it ever really was, but the location of the detached kitchen is not visible.

Dr. James Hall must have been a man of some importance in Howard County to get his house pictured on the Martenet map, and in fact the very scale of the house itself and the fact that it was designed by an architect, as few houses actually were, indicates that Dr. Hall was a very wealthy and at least self-important man. Dr. James Hall graduated from the Medical School of Maine in 1822 and lived for a time in Vermont and New Hampshire before he moved to Maryland by 1830 (5). Hall was very active in the Maryland Colonization Society which worked to send freed slaves to a colony established on the west coast of Africa. The Society hoped to exterminate slavery in Maryland and at the same time remove the freed slaves from the state where they were seen as burdensome and dangerous (6). Hall was in very close contact with John H.B. Latrobe, the first president of the Maryland Colonization Society in 1832, who would become his close neighbor on Lawyers Hill. Dr. Hall traveled to Africa several times on Colonization Society business and was very dedicated to their mission.

The Maryland Colonization Society was formed as an offshoot of the national American Colonization Society because the Marylanders were dissatisfied with the progress of the national organization. In 1833, the Maryland Colonization Society voted to establish a new colony on the west coast of Africa at Cape Palmas and they chose Dr. Hall as the man most well-equipped to travel to Africa to do their bidding. Hall was already familiar with Africa since he traveled to Liberia in 1831 as the physician for the American Colonization Society. (7) In November 1833, Dr. Hall set sail as the agent in charge of 19 settlers bound for Cape Palmas. (8) Hall appears to have been a skillful negotiator on African soil and purchased the land of Cape Palmas for a very favorable price (9). Hall spent two years in the African colony as governor and the sole agent of the Maryland Colonization Society enduring chronic ill health for most of the time. His accomplishments were commendable and by the time he set sail for the United States in early 1836, 220 colonists occupied the town of Harper which consisted of 25 frame houses, numerous farm lots under cultivations, a large stone warehouse, a wharf and four miles of road. The land owned by the Maryland Colonization Society was in the neighborhood of 700 square miles. (10) Hall returned to Africa and was successfully engaged in private trade along the African coast during the late 1830's. In 1840, the Society hired Dr. Hall as their general agent in Baltimore and he was seen as the only man capable of saving the problematic colonization venture. (11) Hall was nothing if not passionate about his work but his correspondence and private comments underscore a serious naivete on his part when it came to the feelings and desires of freed

# Maryland Historical Trust

## Maryland Inventory of Historic Properties Form

Inventory No HO-798

Name Claremont

Continuation Sheet

Number 8 Page 2

blacks (12). Hall continued to champion the cause of the Society and was editor of the quarterly Maryland Colonization Journal during the 1840's. In 1857, Hall returned to the West African coast with another group of settlers. The Maryland Colonization Society had suffered financial woes throughout its existence and by the eve of the Civil War they threatened to swallow the Society entirely. The Society managed to settle its debts before it disappeared during the War, never to reemerge. In the late 1860's, the Society took what small amount was left in its coffers and established the James Hall School Fund in aid of Liberian education. (13)

Presumably, by the time Claremont was completed for him in late 1858, Dr. Hall had returned from Africa and was spending more time at home. The 1860 Federal Census counted Dr. James Hall as the head of a household of five, in addition to himself. One of Halls closest neighbors, based on their proximity to each other in the census, was George Dobbin, a fellow resident of Lawyers Hill, so it seems almost certain that Hall's household was living at Claremont in 1860. Hall's age was listed as 58 and his occupation was listed as merchant. His real estate was valued at \$10,000 and his personal estate was valued at \$1000. His place of birth is listed as New Hampshire. Hall seems to have two children, G.W.S Hall (a male) and C.H. Hall (a female), aged 32 and 30 respectively, who both lived with him. G. Hall was born in New Hampshire while C. Hall was born in Vermont. A twelve-year-old girl named Mary Hait (or Fait or Tait), whose place of birth is listed as Germany was living with the Halls. Two servants, twenty-year-old Kitty Hawkins, a black woman whose occupation was listed as house servant, and twenty-two-year-old Emily Dorsey, a mulatto house servant, were both born in Maryland and are listed as free inhabitants of the household (14). Unfortunately, the slave schedule was not available for review and it would be interesting to know if Hall was a slave owner. It is ironic, given Hall's position with the Maryland Colonization Society with which he worked so hard to settle freed blacks in Africa, that he had not one, but two free people of color serving and living in his house.

Architecturally, Claremont is both unique and ordinary. On the one hand, Claremont is a wonderfully maintained rare example of an architect designed high-style Italianate dwelling. The parallel double gabled roof, elaborate cornice detail, arched wall dormers, and decorative detailing on both the interior and exterior of the house are exemplary in their craftsmanship, and taken as a whole, there is no stylistic equal to Claremont still standing in Howard County. It is interesting to note, therefore, that the plan of the house is actually very common in mid-19th century architecture. The center hall plan with two large semi-public rooms downstairs in addition to a less formal family parlor, four bedrooms on the second floor and four more rooms on the third floor, in addition to a separate servant space on each floor, is very common in upper-middle class homes dating from the mid-19th century that depended, at least in part, on domestic servant labor. (15) The service bell system documented in Claremont was probably more common in upper class homes than is realized simply because they do not often survive. An almost identical system has been documented at Blandair in Howard County which was constructed in the late 1850's. The preservation of the rocker arms and the one crank at Claremont is highly significant.

Claremont is a significant site both architecturally and historically. The setting of the house on close to 40 acres amidst the woods and hills of the Lawyers Hill area is very important to her integrity. It is unfortunate that plans for the subdivision of the 40 acres will destroy this setting and leave the house on only half an acre, but at least the house will remain as an excellent example of a high-style Italianate home with an important connection to a significant chapter in American history.

### Footnotes

- (1) Artifact is in the possession of the current owner of Claremont and is intended to remain with the house.
- (2) Personal communication, Ken Short, September 2, 2003.
- (3) See attached chain of title for specific libers and folios for land transactions relating to the Claremont property.
- (4) Howard County Land Records, Liber 8, Folio 259. Howard County Courthouse, Ellicott City.
- (5) Penelope Campbell, *Maryland in Africa: The Maryland State Colonization Society 1831-1857*. (Chicago: University of Illinois Press, 1971), 54.

**Maryland Historical Trust**  
**Maryland Inventory of**  
**Historic Properties Form**

Inventory No HO-798

Name Claremont

Continuation Sheet

Number 8 Page 3

- 
- (6) Ibid, 59-62.  
(7) Ibid, 54.  
(8) Ibid, 57.  
(9) Ibid, 75.  
(10) Ibid, 88.  
(11) Ibid, 149.  
(12) Ibid, 176, 184.  
(13) Ibid, 210.  
(14) 1860 Federal Census, Howard County, First District. On microfilm at the Howard County Historical Society.  
(15) Thomas A. Reinhart, A STUDY OF BLANDAIR FARM IN HOWARD COUNTY, MARYLAND. A thesis submitted to the faculty of Columbian College of Arts and Sciences of The George Washington University in partial satisfaction of the requirements for the degree of Master of Arts, January 20, 2003. On file at the Maryland Historical Trust and the Howard County Historical Society.

---

## 9. Major Bibliographical References

---

Inventory No. HO-798

See continuation sheet.

---

## 10. Geographical Data

---

Acreage of surveyed property 43.3 acresAcreage of historical setting 38.5 acresQuadrangle name RelayQuadrangle scale 1:24000

---

### Verbal boundary description and justification

Tax map 32, parcel 24. Existing acreage includes all of the original acreage plus several acres. But the 43 acres is about to be subdivided leaving the house and outbuilding on a 1/2 acre.

---

## 11. Form Prepared By

---

name/title Kristin H. Hill, Historic Sites Surveyororganization Howard County Department of Planning and Zoningdate 9/10/03street and number 3430 Court House Drivetelephone 410-313-4335city or town Ellicott Citystate MD zip code 21043

*The Maryland Inventory of Historic Properties was officially created by an Act of the Maryland Legislature to be found in the Annotated Code of Maryland, Article 41, Section 181 KA, 1974 supplement.*

The survey and inventory are being prepared for information and record purposes only and do not constitute any infringement of individual property rights.

return to: Maryland Historical Trust  
DHCD/DHCP  
100 Community Place  
Crownsville MD 21032  
410-514-7600

**Maryland Historical Trust**  
**Maryland Inventory of**  
**Historic Properties Form**

Inventory No. HO-798

Name Claremont

Continuation Sheet

Number   9   Page   1  

---

Campbell, Penelope, MARYLAND IN AFRICA: THE MARYLAND STATE COLONIZATION SOCIETY 1831-1857, Chicago: University of Illinois Press, 1971.

Hopkins, G.M. ATLAS OF FIFTEEN MILES AROUND BALTIMORE INCLUDING HOWARD COUNTY MARYLAND. Philadelphia, 1878.

Martenet, Simon. MARTENET'S MAP OF HOWARD COUNTY, MARYLAND. Baltimore, 1860.

Reinhart, Thomas A. A STUDY OF BLANDAIR FARM IN HOWARD COUNTY, MARYLAND. A thesis submitted to the faculty of Columbian College of Arts and Sciences of The George Washington University in partial satisfaction of the requirements for the degree of Master of Arts, January 20, 2003. On file at the Maryland Historical Trust and the Howard County Historical Society.

Personal communication, Ken Short, September 2, 2003.

1860 Federal Census, Howard County, First District. On microfilm at the Howard County Historical Society.

Howard County Land Records, Howard County Courthouse, Ellicott City, see attached chain of title for specific libers and folios.

HO-798  
 Claremont  
 6051 Lawyers Hill Road, Elkridge  
 Howard County

CHAIN OF TITLE

GRANTOR	HOME COUNTY	GRANTEE	HOME COUNTY	DATE	LIBER	FOLIO	TRANSACTION	COMMENTS
Paul D. Meyer		Claremont LLC		Dec. 29, 2000	5307	448	Deed	Three parcels of land, biggest one is 44.57 acres and includes the house.
Charles C. McColgan, C. Nelson Dugan and wife Prudence	Baltimore City	Charles F. Meyer	Baltimore City	Dec. 15, 1942	176	516	Deed	Parcel of land called Claremont, purchase price of \$6000, extensive metes and bounds described, total of 44.57 acres, same tract conveyed in L159, F396.
The Evergreen Children's Home		Charles C. McColgan and C. Nelson Dugan	Baltimore City	April 6, 1937	159	396	Deed	Tract of land called Claremont, 44.57 acres, Dugan and wife sold Claremont to the Evergreen Children's Home in 1935. Same land conveyed in L99, F322.
C. Nelson Dugan and wife Prudence	Baltimore City	The Evergreen Children's Home		Oct. 26, 1935	153	43	Deed	Claremont, 44.57 acres, same land conveyed in L99, F322.

HO-798  
 Claremont  
 6051 Lawyers Hill Road, Elkridge  
 Howard County

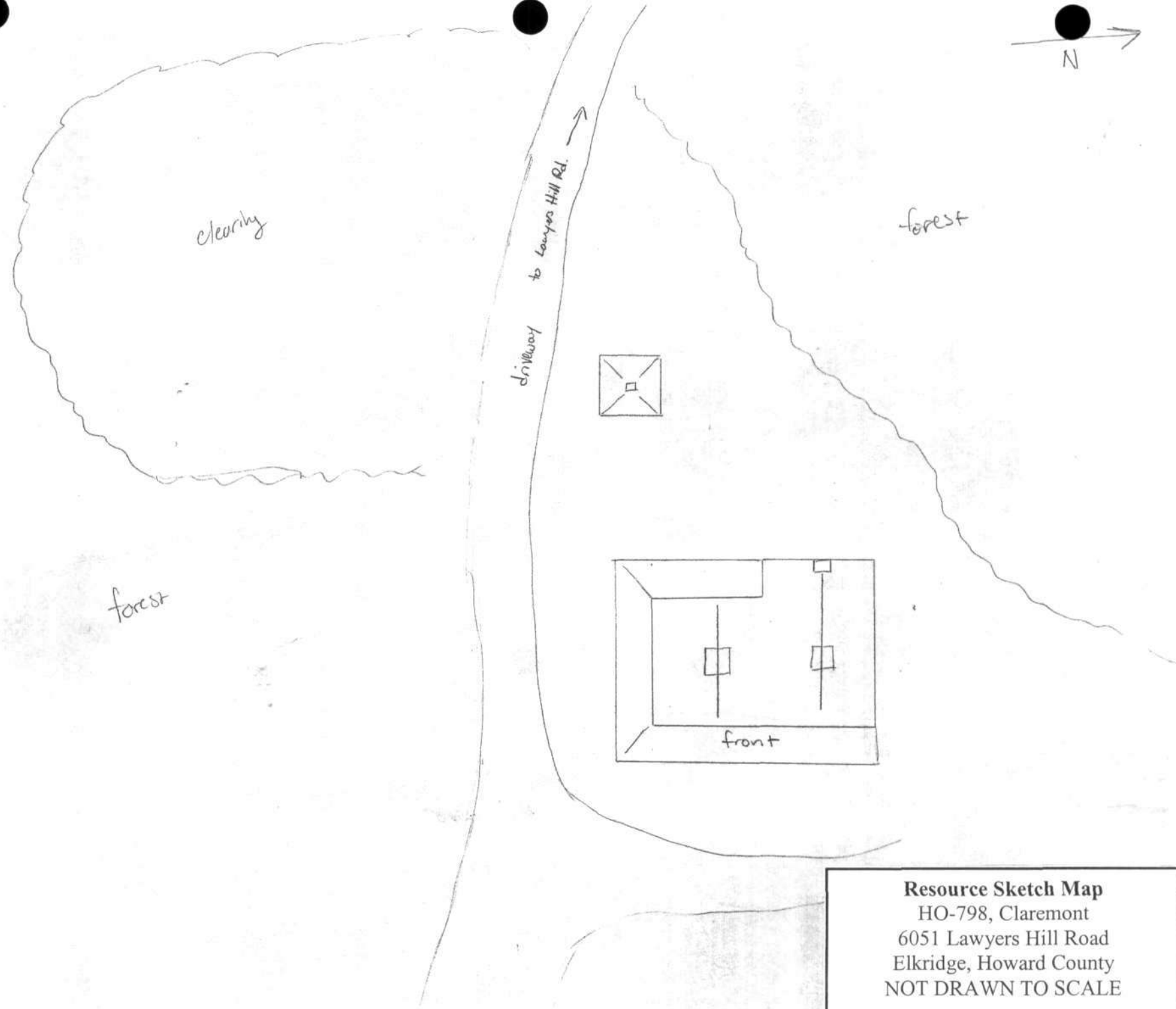
CHAIN OF TITLE

GRANTOR	HOME COUNTY	GRANTEE	HOME COUNTY	DATE	LIBER	FOLIO	TRANSACTION	COMMENTS
John S. Melcher, trustee, Caroline S. Denby and Edwin Denby, her husband, and Henry Keppel Parker	New York, Edmonton Alberta, Canada, Syracuse	Frederick and Anne Sieling	Howard	June 5, 1915	99	322	Deed	Dr. James Hall left Claremont to his son, George W.S. Hall, in his will and after his sons death it was to go to his sons children or grandchildren. George died in 1899 leaving two daughters Juliette Hall Parker and Caroline S. Denby. Juliette died and left her share of the real estate to John S. Melcher. Claremont totals 44.57 acres and this deed refers to the 8 separate deeds through which James Hall acquired those 44 acres.
Daniel Foley	Baltimore City	James Hall	Howard	Nov. 3, 1858	19	527	Deed	Daniel Foley is the court appointed trustee authorized to sell land as a result of an equity case between Grayson Eichelberger and Margaret Woodsides dating March 19, 1857. Hall pays \$10,500 for the property. Property is not described but deed references L11, F90 and L8, F259.

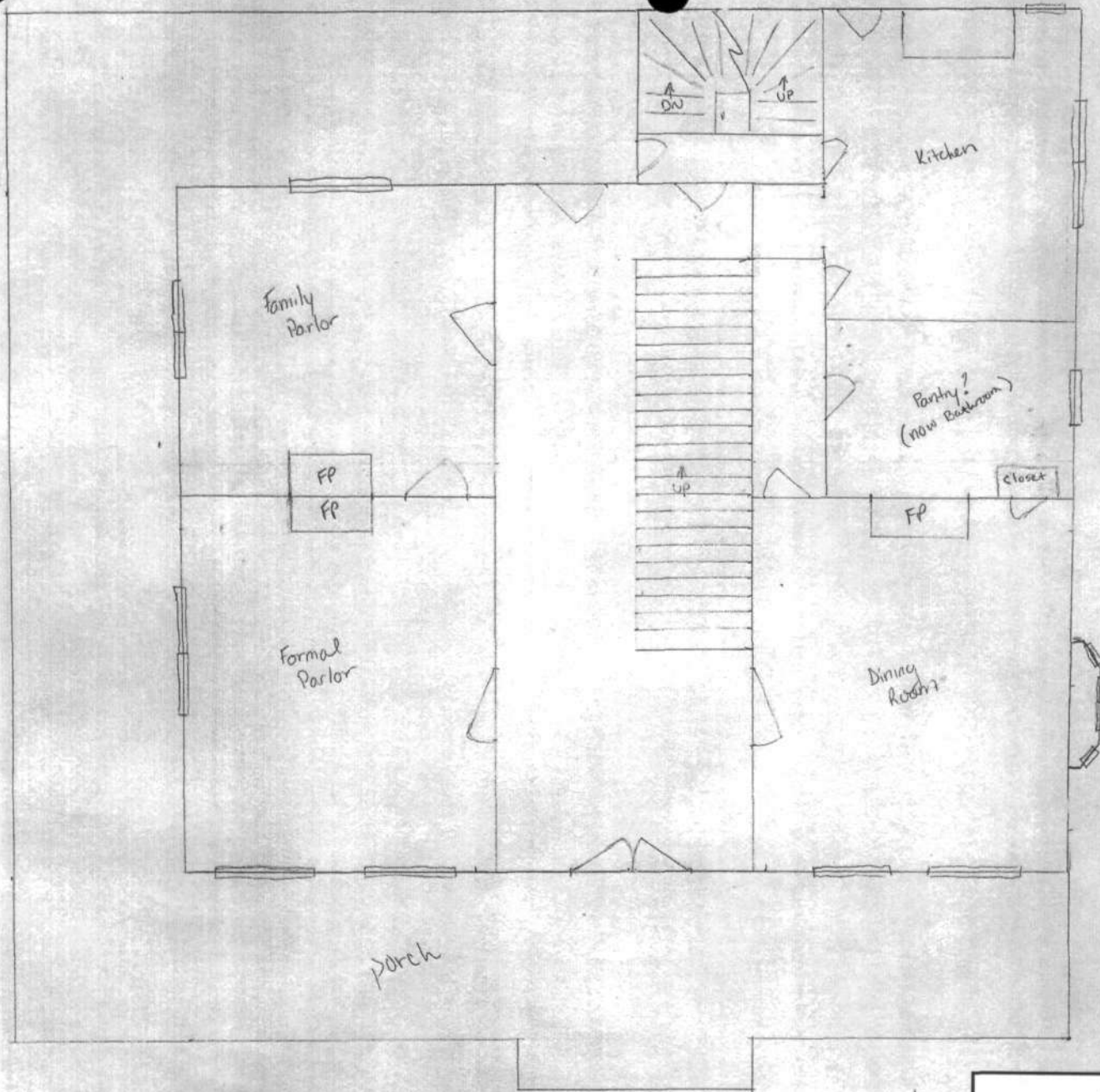
HO-798  
 Claremont  
 6051 Lawyers Hill Road, Elkridge  
 Howard County

CHAIN OF TITLE

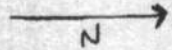
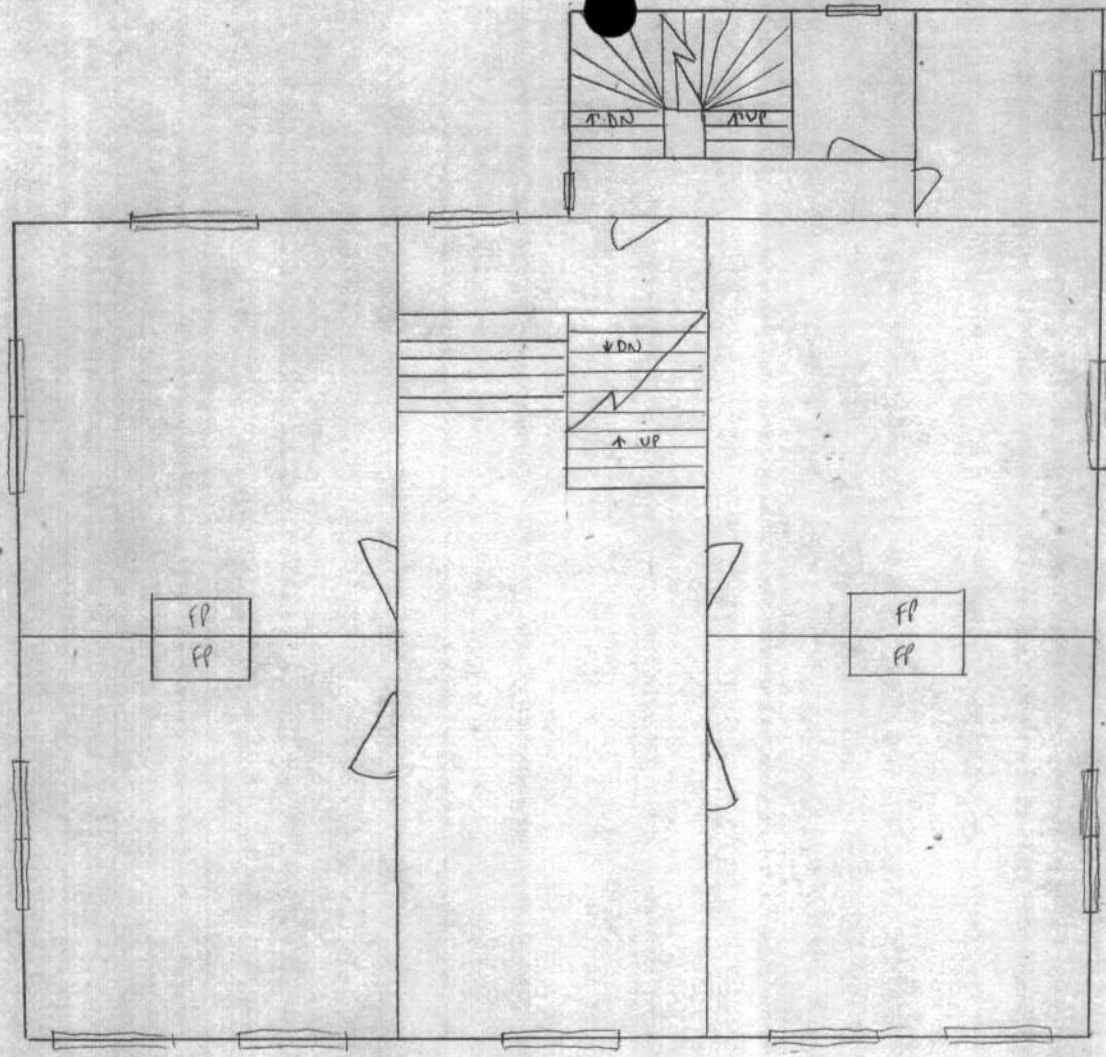
GRANTOR	HOME COUNTY	GRANTEE	HOME COUNTY	DATE	LIBER	FOLIO	TRANSACTION	COMMENTS
Isaac Todhunter, Elizabeth Todhunter, widow of Joseph Todhunter, and George M. Gill	Baltimore City, Howard District, Baltimore City	John T. Woodside	Howard District	June 28, 1851	11	90	Deed	George Gill sold the property in question (which is not described) to Isaac Todhunter in trust for Elizabeth. Isaac, Elizabeth and Joseph mortgaged the property back to Gill and were unable to repay it so they sell it to Woodside for \$7000. Deed references L8, F259 for the property description.
George M. Gill and wife, Ann	Baltimore City	Isaac E. Todhunter	Baltimore City	Oct. 4, 1848	8	259	Deed	The property is described extensively and is made up of several separately purchased lots that are portions of tracts called Barren Hills, Hills Discovery, Fosters Fancy, and Bellet Point. A total of 38.5 acres described as "the whole of the property as now possessed and recently occupied by the said George M. Gill as a country residence." Isaac is to hold the property in trust for Elizabeth Todhunter, wife of Joseph Todhunter, so that she may have her own land and source of support separate from any control by her husband.



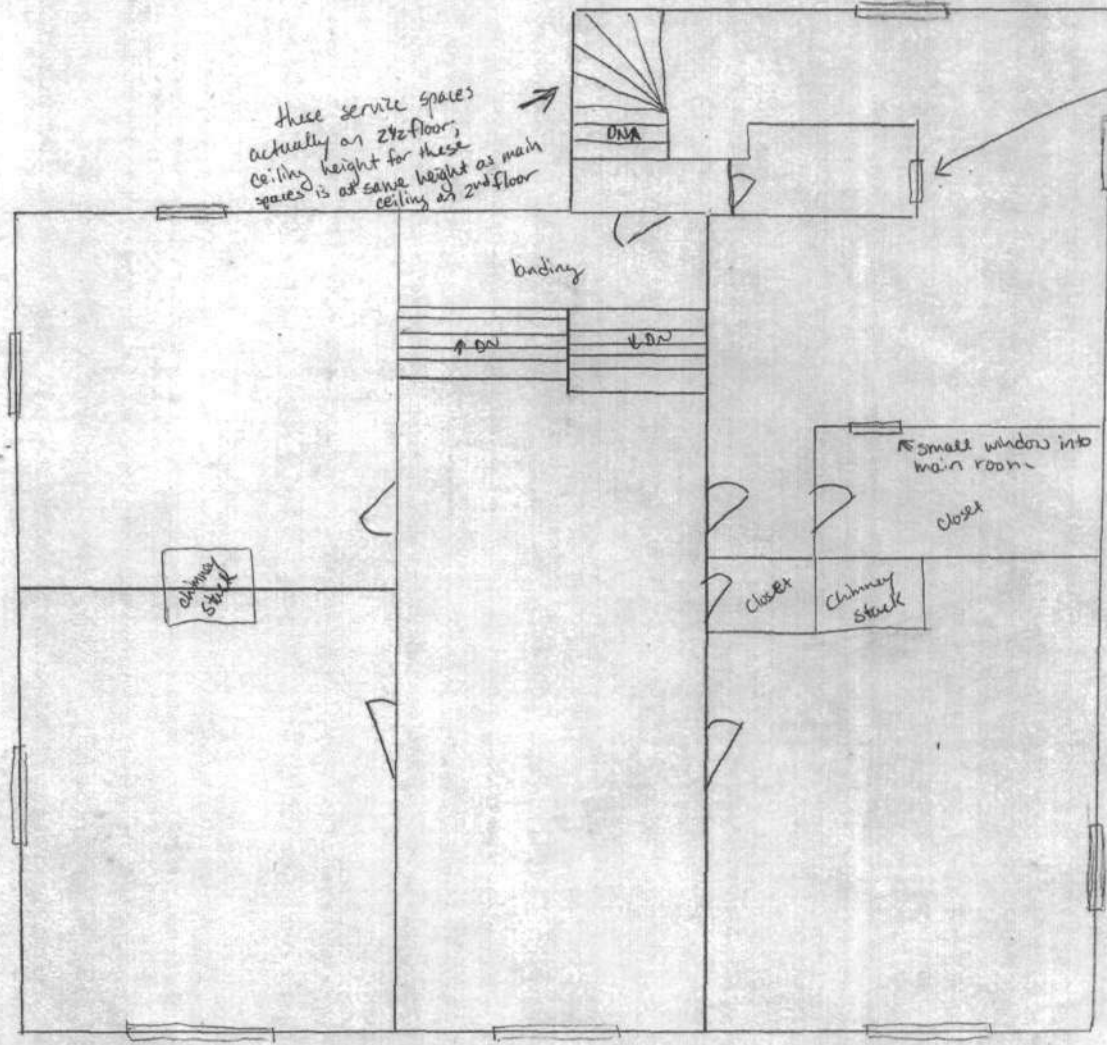
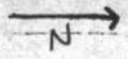
**Resource Sketch Map**  
HO-798, Claremont  
6051 Lawyers Hill Road  
Elkridge, Howard County  
NOT DRAWN TO SCALE



**First Floor Plan**  
HO-798, Claremont  
Elkridge, Howard County  
NOT DRAWN TO SCALE



**Second Floor Plan**  
HO-798, Claremont  
Elkridge, Howard County  
NOT DRAWN TO SCALE



these service spaces  
actually on 2nd floor,  
ceiling height for these  
spaces is at same height as main  
ceiling of 2nd floor

this window looks  
down into 2nd  
floor servants chamber

this room  
actually occupies  
this entire corner  
above the service  
space shown

**Third Floor Plan**  
HO-798, Claremont  
Elkridge, Howard County  
NOT DRAWN TO SCALE



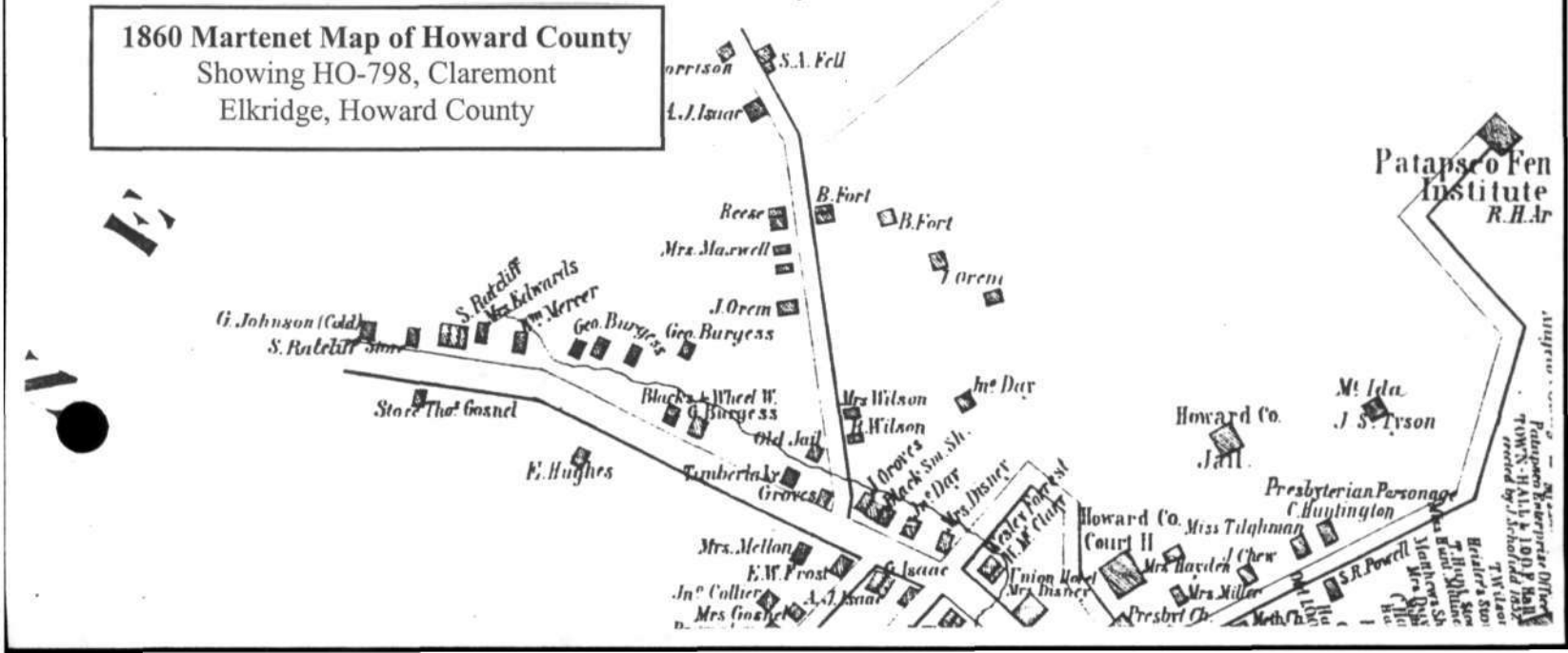
Baseboard molding profile  
Taken in the dining room, same  
throughout the first floor  
Claremont, HO-798  
6051 Lawyers Hill Rd., ElKridge  
August 2003, K.Hill



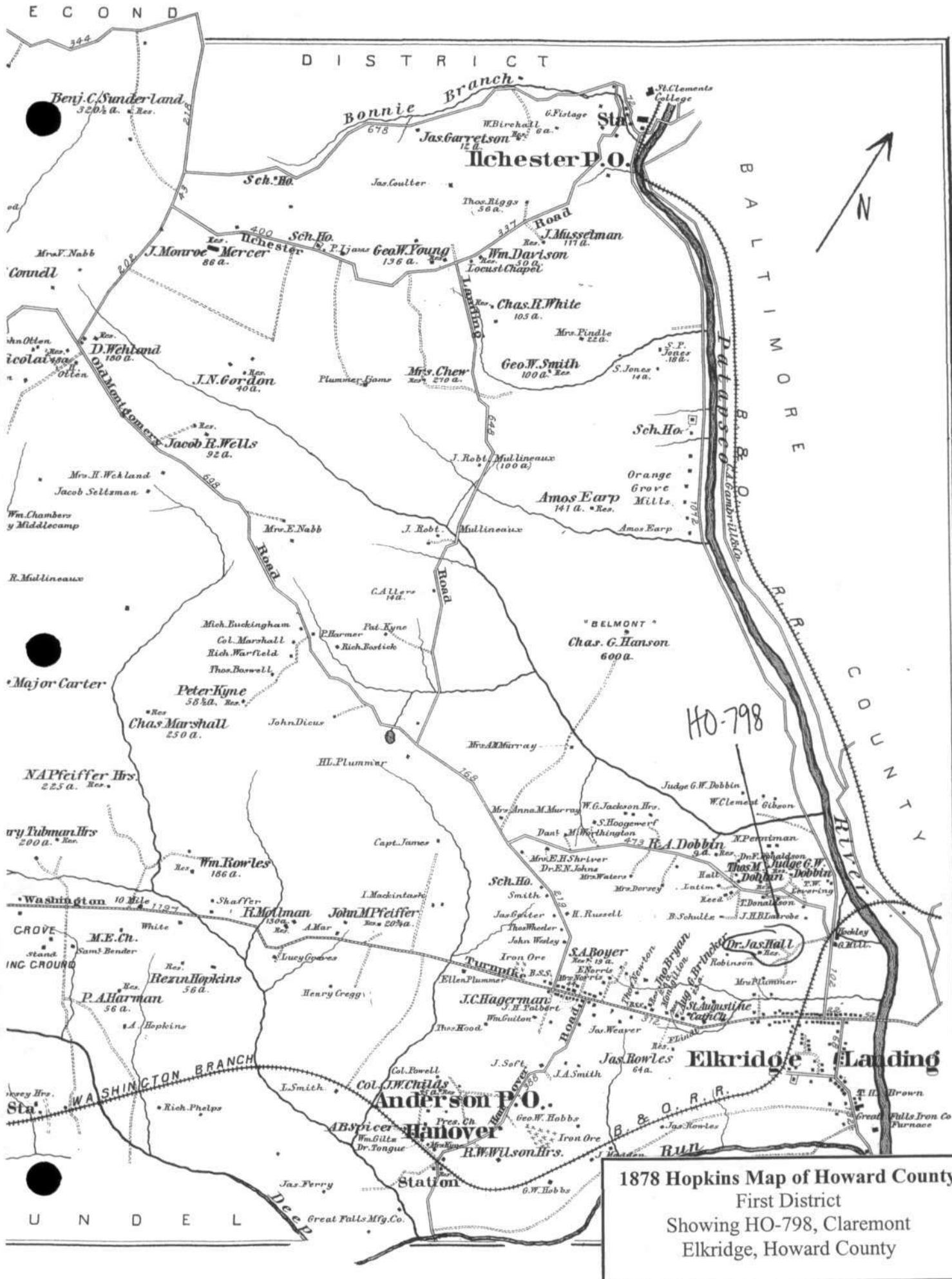
Molded door panel  
Taken in the dining room,  
Same throughout first + second floor  
Claremont, HO-798  
6051 Lawyers Hill Rd., ElKridge  
August 2003, K. Hill



1860 Martenet Map of Howard County  
 Showing HO-798, Claremont  
 Elkridge, Howard County



Copyright Office  
 Patapsco Fen Institute  
 R.H.A.  
 1907



1878 Hopkins Map of Howard County  
 First District  
 Showing HO-798, Claremont  
 Elkridge, Howard County

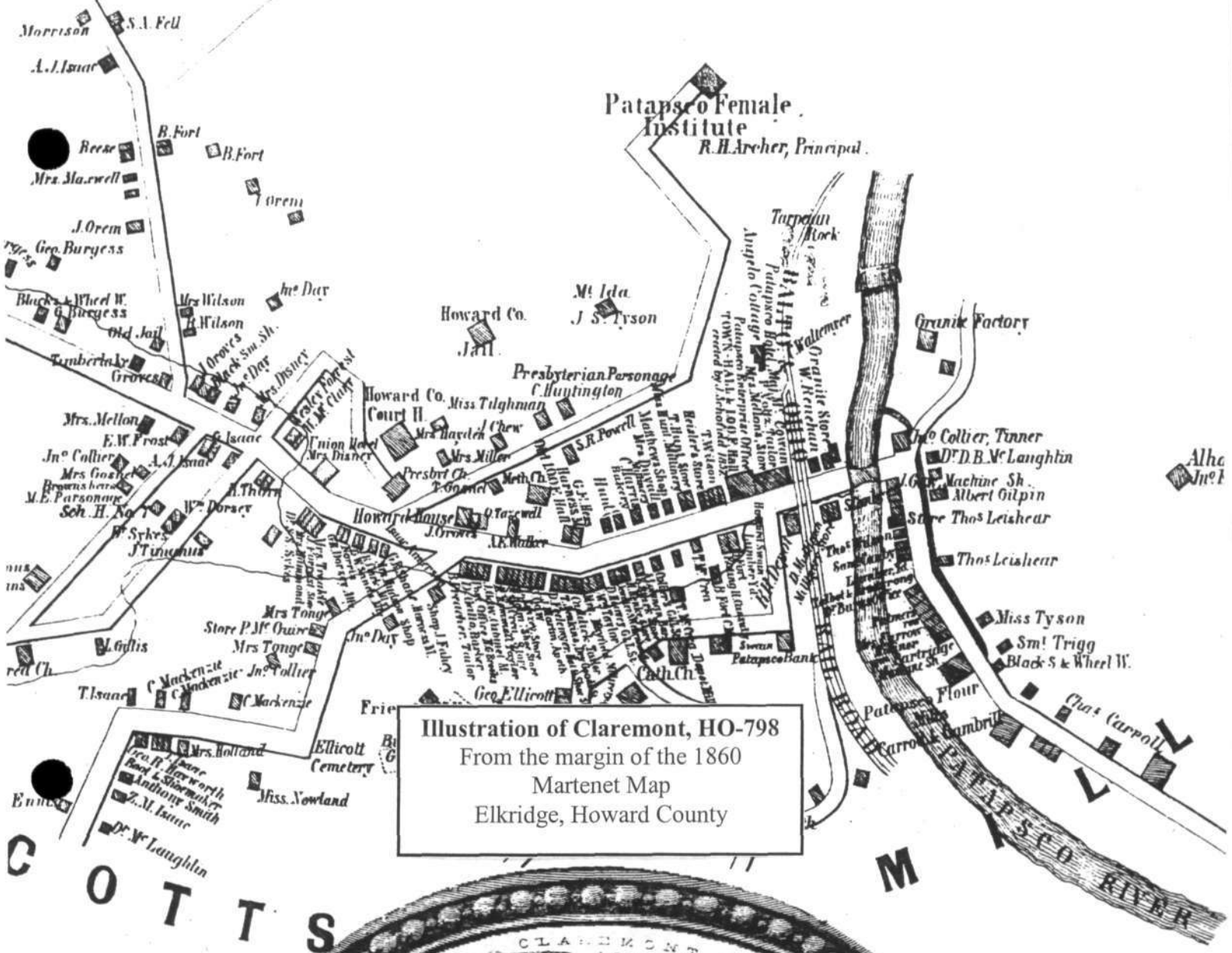


Illustration of Claremont, HO-798  
 From the margin of the 1860  
 Martenet Map  
 Elkridge, Howard County





Courtesy of Maryland Historical Society

Dr. James Hall (1802–1889)

**Dr. James Hall**

Original owner of Claremont, HO-798  
Elkridge, Howard County  
From Penelope Campbell's book on the  
Maryland Colonization Society



4344  
4343  
4342  
12'30"  
4341  
WASHINGTON, D.C. 27 MI.  
SAVAGE 5.7 MI.  
5662 III NE  
(SAVAGE)  
4338

**Locational Map**  
HO-798, Claremont  
6051 Lawyers Hill Road  
Elkridge, Howard County  
USGS Topographic Quadrangle, Relay



HO-798, Claremont

6051 Lawyers Hill Rd., Elkridge

Howard County, MD

Kristin Hill, 8/03

36 21+82 NNNNN 438

Negative at MDSHPD

NE elevation

1/34



MARKER FUEL CO.  
HEATING & COOKING

AD-798, Claremont

6051 Lawyers Hill Rd, Elkridge

Howard County, MD

35 21+02 NNNNN 430

Knob Hill, 8/03

Negative at MDS1+00

East (front) elevation

2134



HO-798, Claremont  
6051 Lawyers Hill Rd., Elkridge  
Howard County, MD

Kristin Hill, 8/03

02 21+02 NNNNN 430

Negative at MDSTPO

SE elevation

3/34



HO-798, Claremont

6051 Lawyers Hill Rd., Elkridge

Howard County, MD

01 21+01 NNNNN 430

Kristin Hill, 8/03

Negative at MD SHPO

First story, front (east) elevation

4/34



H0-798, Clarenton

6051 Lawyers Hill Rd., Elkridge

Howard County, MD

34 21-01 NNNNN 438

Kristin Hill, 8/03

Negative at MDSHPD

SW elevation

5/34



HO-798, Claremont  
6051 Lawyers Hill Rd., Elkridge  
Howard County, MD  
Kistler Hill, 8/03  
Negative at MDSTPO  
North elevation

25 21+01 NNNNN 430

6/34



110-798, Claremont

6051 Lawyers Hill Rd, Elkridge

Howard County, MD

Kn3tin Hill, 8/03

Negative at MDSHPD

SW corner, closeup of chimney and cornice detail

7/34

26 21+01 NNNNN 430



HO-798, Claremont

6051 Lawyers Hill Rd., Elkridge

Howard County, MD

Knights Hill, 8/03

27 21+01 NNNNN 438

Negative at MD SHPO

Close-up of porch and front entry, east facade

8/34



HO-798, Claremont

6051 Lawyers Hill Rd., Elkridge

Howard County, MD

26 21+00 NNNNN 430

Kristin Hill, 8/03

Negative at MDSHPD

Front door

9/34



HO-798, Clarcmont

6051 Lawyers Hill Rd., Elkridge

Howard County, MD

21 21+00 NNNNN 430

Kroth Hill, 8/03

Negative at MDSHPo

Main Stair, 1<sup>st</sup> floor

10/34



H0-798, Clarcment  
6051 Lawyers Hill Rd., Elkridge

Howard County, MD  
Kirstin Hill, 8/03

18 21-02 NNNNN 430

Negative at MD5H00

Stair, 1<sup>st</sup> floor

11/34



HO-798, Claremont  
6051 Lawyers Hill Rd., Elkridge

Howard County, MD

Kristin Hill, 8/03

17 21-01 NNNNN 430

Negative at MDSHPD

detail of stair end decoration

12/34



HO-798, Claremont

6051 Lawyers Hill Rd., Elkridge

Howard County, MD

14 21+01 NNNNN 430

Knstik Hill, 8/03

Negative at MDSHPO

Newel post, first floor main stair

13/34



AD-798, Claremont

6051 Lawyers Hill Rd., Elkridge

Howard County, MD

Kristin Hill, 8/03

20 21+00 NNNNN 430

Negative at MDSHPD

Looking up main stairwell to 3<sup>rd</sup> floor

14/34



HO-798, Claremont

6051 Lawyers Hill Rd., Elkridge

Howard County, MD

15 21+00 NNNNN 430

Kristin Hill, 8/03

Negative at MDSHPD

First floor door trim, doorway from central hall to dining room

15/34



HO-798, Claremont

6051 Lawyers Hill Rd., Elkridge

Howard County, MD

Kristin Hill, 8/03

24 21+00 NNNNN 430

Negative at MDSHPD

Marble mantle, formal parlor

16/34



HO-798, Claremont

GOSI Lawyers Hill Rd, Elkridge

23 24 +00 NNNNN 438

Howard County, MD

Kristin Hill, 8/03

Negative at MDSTHO

marble mantle, dining room

17/34



HO-798, Clarmont

6057 Lawyers Hill Rd, Elkridge

Howard County, MD

22 21-81 NNNNN 430

Rustin Hill, 8/03

Negative at MD SHPO

detail of dining room mantle

18/34



HD-798, Claremont

6051 Lawyers Hill Rd., Elkridge

Howard County, MD

16 21-02 NNNNN 430

Knight Hill, 8/03

Negative at MDSHPO

ceiling medallion, formal parlor

19/34



HO-798, Claremont  
6051 Lawyers Hill Rd., Elkridge  
Howard County, MD  
Kinzin Hill, 8/03

03 21-02 NNNNN 430

Negative at MDSHPD

Plaster crown molding in dining room  
20134



HO-798, Claremont

6051 Lawyers Hill Rd., Elkridge

Howard County, MD

19 21+01 NNNNN 430

Kristin Hill, 8/03

Negative at MDSHPD

Marble mantle in family parlor

21/34



HO-798, Claremont

6051 Lawyers Hill Rd., Elkridge

Howard County, MD

Kristin Hill, 8/03

12 21+00 NNNNN 430

Negative at MDSHPO

Door trim, second floor main part of house

22/34



HO-798, Claremont

6051 Lawyers Hill Rd, Elkridge

Howard County, MD

13 21-01 NNNNN 438

Kristin Hill, 8/03

Negative at MDSTHO

Second floor bedroom marble mantle

23/34



HO-798 Claremont  
6051 Lawyers Hill Rd., Elkridge  
Howard County, MD

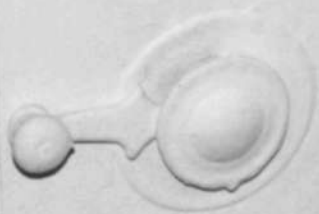
07 21-02 NNNNN 430

Kristin Hill, 8/09

Negative at MDSHPO

door trim on third floor

24/34



H0-798, Claremont

6051 Lawyers Hill Rd., Elkridge

Howard County, MD

06 21-02 NNNNN 430

Kn3tm Hill, B/03

Negative at MDSTPO

crank for service bell system remaining in dining room

25/34



HO-798, Claremont

6051 Lawyes Hill Rd., Elkridge

Howard County, MD

Kristin Hill, 8/03

04 21+01 NNNNN 430

Negative at MDSTHO

Two rocker arms in place on basement ceiling, used to  
conduct wires for service bell system

26/34



HO-798, Claremont

6051 Lawyers Hill Rd., Elkridge

Howard County, MD

Kristin Hill, 8/03

05 21-02 NNNNN 430

Negative at MDSHPO

close up of roller arm on basement ceiling that used to  
conduct wires for service bell system

27/34



HO-798, Claremont

6051 Lawyers Hill Rd., Elkridge

Howard County, MD

Kristin Hill, 8/03

33 21+02 NNNNN 430

Negative at MDSHPO

West elevation, rear, brick summer kitchen in foreground,

existing approach to house

28/34



HO-798, Claremont

6051 Lawyers Hill Rd, Elkridge

Howard County, MD

32 21+01 NNNNN 430

Kristin Hill, 8/03

Negative at MDSHPD

Brick summer kitchen, NW elevation

29/34



HO-798, Claremont

6051 Lawyers Hill Rd., Elkridge

Howard County, MD

Kristin Hill, 8/03

31 21+01 NNNNN 430

Negative at MDSHPO

Brick summer kitchen, NE elevation, notice patch on E wall

30134



HO-798, Claremont

6051 Lawyers Hill Rd., Elkridge

Howard County MD

38 21+01 NNNNN 438

Kristin Hill, 8/03

Negative at MDSHPD

Brick summer kitchen, close-up of patch on E wall

31/34

This House owned by 27 St. Hill, of Baltimore  
Columns or Arches erected by John St. Pugh  
Baltimore  
Architect R. Snowden Andrews  
Baltimore

HO-798. Claremont  
6051 Lawyers Hill Rd, Elkridge

Howard County, MD

Kristin Hill, 8/03

Negative at MDSMPO

11 21+01 NNNNN 430

board found in the newel post containing names and dates of  
construction

32/34

This house owned by Mr. J. Hall of Baltimore  
Collapses and is here depicted by John H. Pugh  
Baltimore  
Architect R. Snowden Andrews  
Baltimore

HO-798, Claremont  
6051 Lawyers Hill Rd, Elkridge

Howard County, MD

Kristin Hill, 8/03

08 21+01 NNNNN 430

Negative at MDS/HPO

board found in the newer post containing names and  
dates of construction

33/34

Printed by John B. ...  
Balt. Co.

1838  
1868

HO-798, Clarendon  
6051 Lawyers Hill Rd., Elkridge

Howard County, MD

Kristin Hill, 8/03

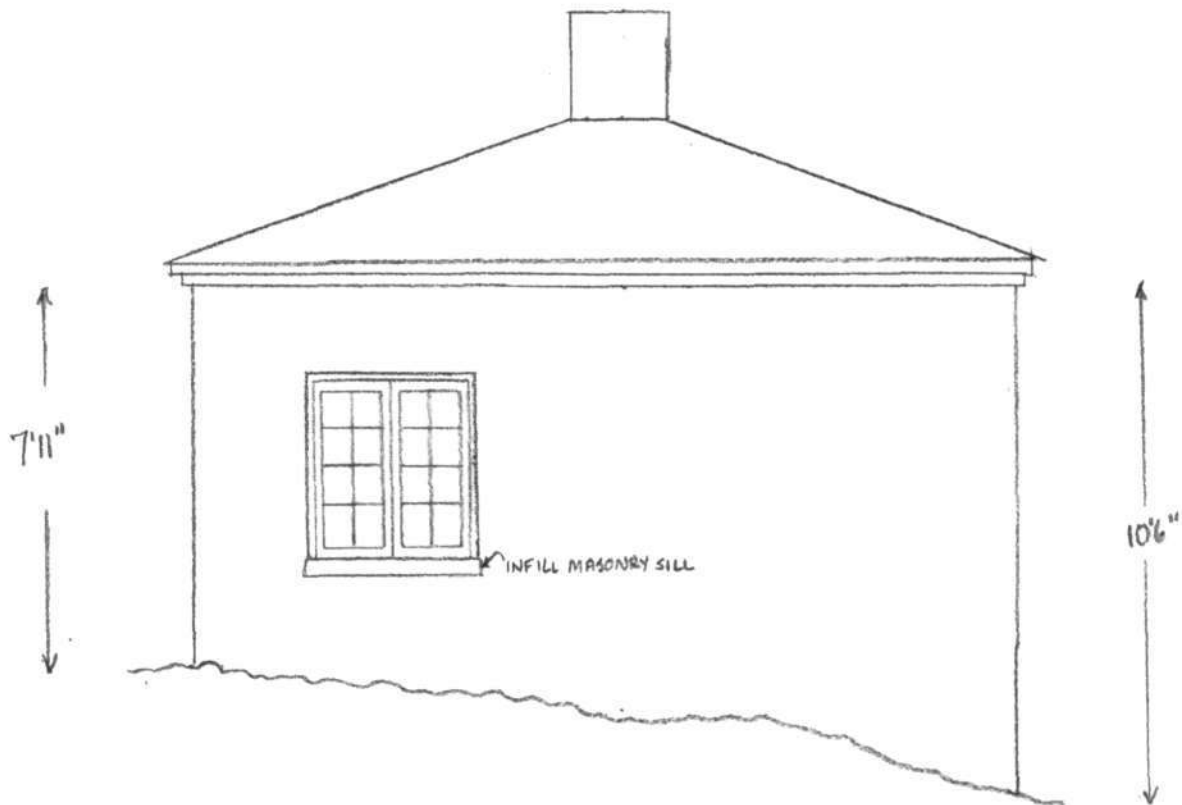
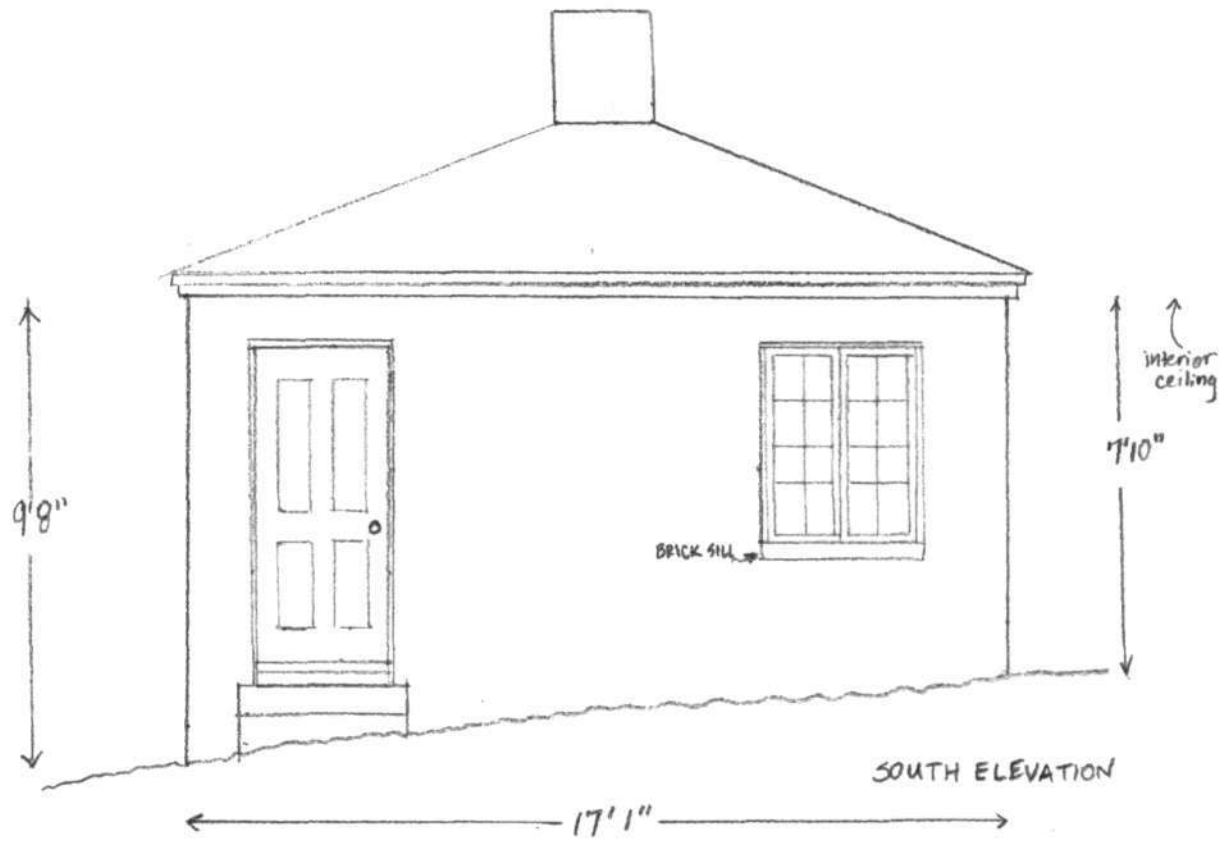
09 21+01 NNNNN 430

Negative at MDSHPO

board found in the newer post containing names and dates  
of construction

34/34

HO-798



CLAREMONT SUMMER KITCHEN

HO-798

LAWYERS HILL RD

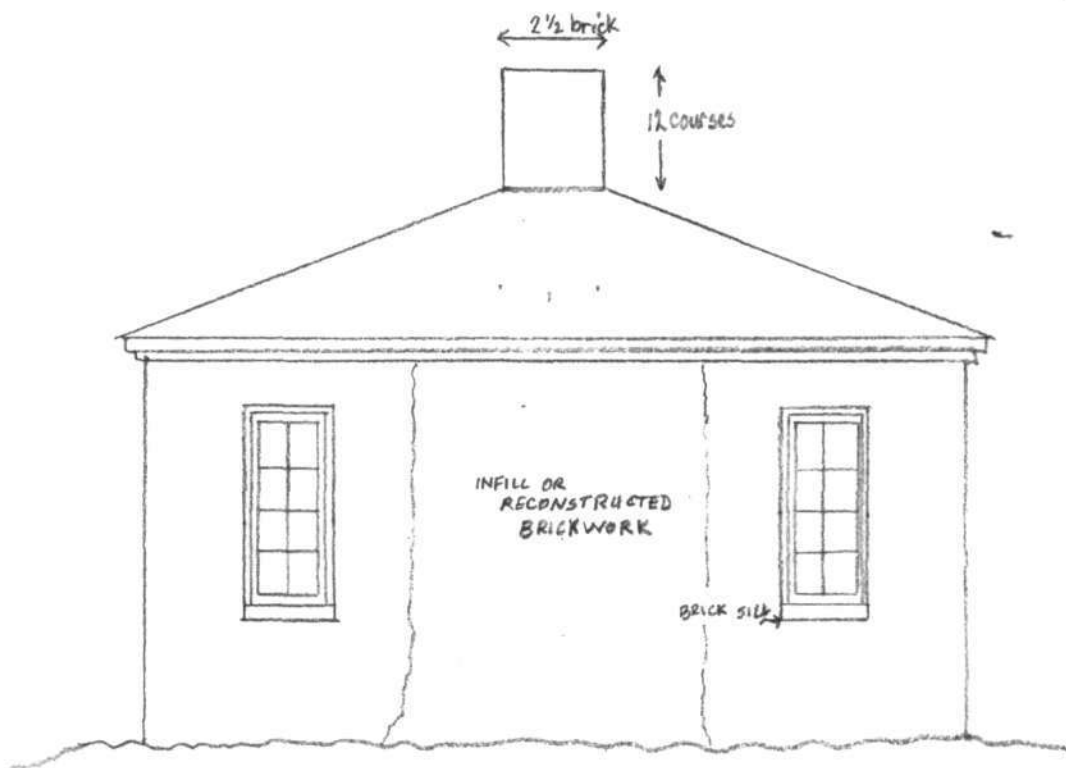
ELKRIDGE

NORTH ELEVATION

L WINGATE

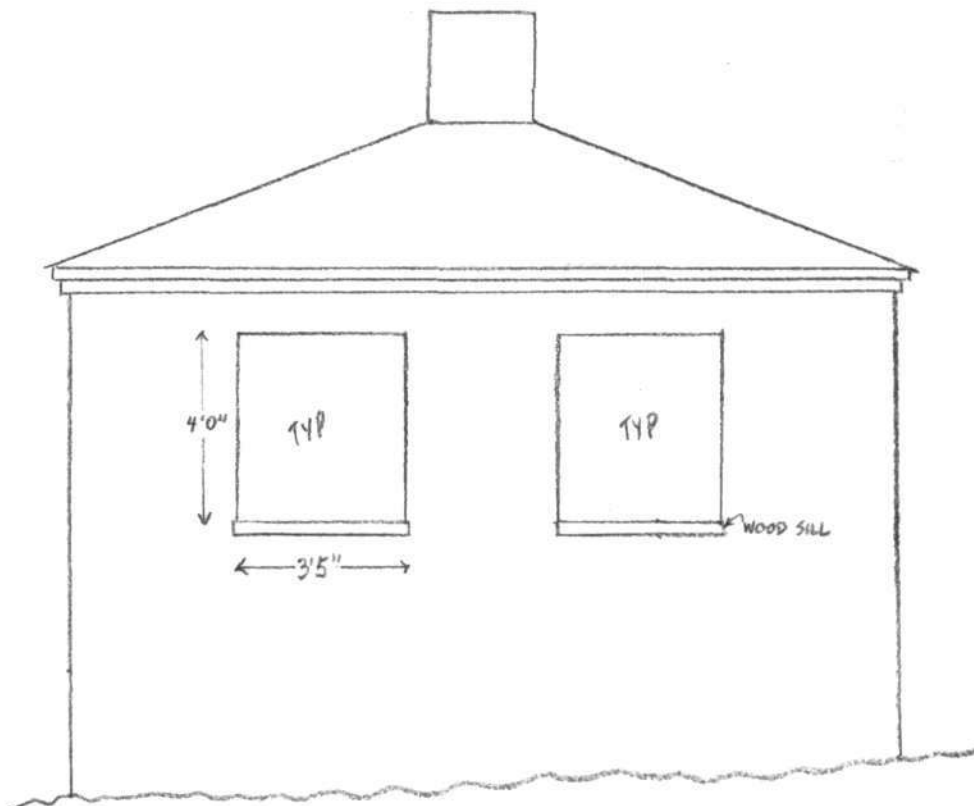
1/2010

1/4" = 1'0"



EAST ELEVATION

← 17'2" →



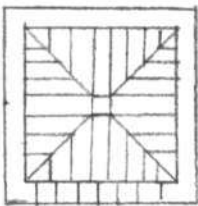
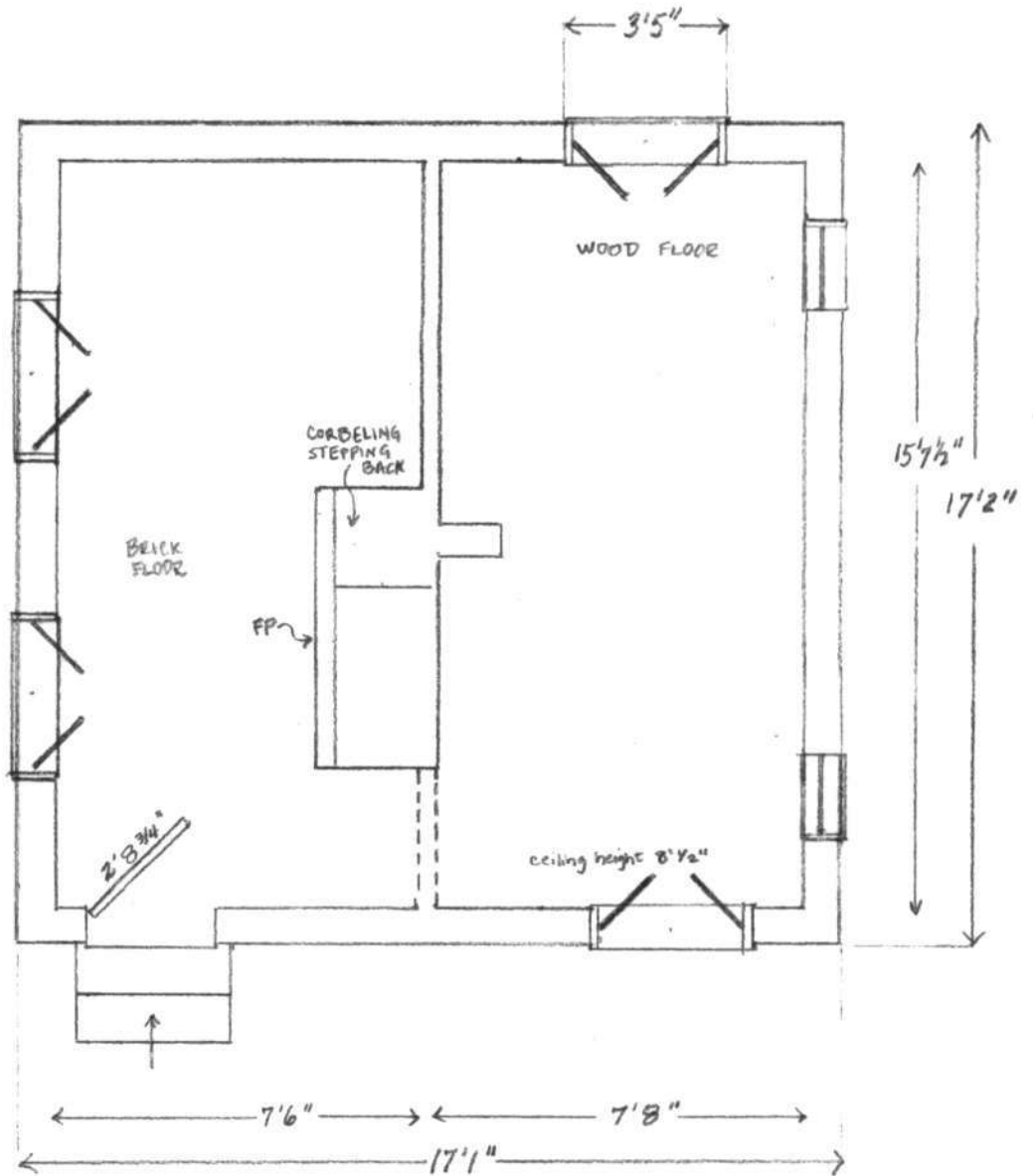
WEST ELEVATION

1/4" = 1'0"  
L WINGATE  
1/2010

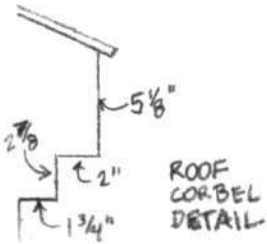
CLAREMONT SUMMER KITCHEN

HO-798

LAWYERS HILL RD  
ELKRIDGE



ROOF FRAMING PLAN



ROOF CORBEL DETAIL

# CLAREMONT SUMMER KITCHEN

OLD LAWYERS HILL RD.  
 ELKRIDGE-HOWARD CO.  
 HO-798

FLOOR PLAN

1/4" = 1'0"

L. WINGATE 1/2010

## NOTES on CLAREMONT's SUMMER KITCHEN

To accompany drawings and photos

### **EXTERIOR**

Low-pitched, hipped roof; composite shingles;

Brick = 8" x 2", deep red color, hard fired, smooth finish, running bond, very few headers; painted;

Mortar = hard texture with rough river sand aggregate with some small chunks of lime; 3/8" joints;

Chimney = 2 1/2 bricks wide by 12 courses high;

East elevation, center section, 6'6" wide section of wall from corbelled eaves down to ground = infill or reconstructed brickwork;

Infill brick under door; sill built up with wood;

Concrete block and brick steps; two 12" deep, 7" high steps, 3'4" wide, lead up to SW door;

Current doorframe looks modern, trimmed with 1" plain casing; original doorframe gone;

Four panel, repurposed, 1 1/2" thick wood door; 2'8 3/4" wide; was 6'3" plus 1 1/2" added when door was installed in this location; bottom panels 1'9" tall & top panels 2'8 3/4" tall;

Brick window sills on S and E elevations, but different brickwork; N elevation parged masonry window sill; on W elevation, wood window sill on N side is damaged and the one on S side is missing;

In-swinging, double-leaf casement windows on N, W & S sides and single sash on E side; each sash = eight panes (2x4);

One shutter dog found on SW corner.

(Continued)

NOTES on CLAREMONT's SUMMER KITCHEN to accompany drawings and photos *continued*

### **INTERIOR**

No trim around the entry doorframe;

No baseboards;

Window trim = 2" beaded;

Window sill = 2 ½" in E room; in W room modern wood sills 3 ½" high x 5 ½" deep;

Ceiling height 1' 1" above top of window openings;

Doorway between two rooms plain wood trim with 5" reveal; 2 x 6" lintel;

Interior walls stuccoed and painted;

Ceiling had been lath and plaster, later covered with drywall;

Ceiling timbers 3-3 ½ x 3 ¾";

Roof rafters 4 x 4";

Mostly brick floor, except wood floor in NE corner – both irregular;

Central brick chimney – interior dimension 24" wide with 10 step, full width corbel on west side that serves to shift the chimney from the west room to middle of structure so it exits through the center of the roof;

Cooking FP, facing west, with plain wood mantel, 5'10" wide @ 5' height; hole for stove pipe on east side;

Rooms cluttered at time of September documentation, precluding further investigation.

Submitted to MHT

By Lisa Wingate, Preservation Consultant

As part of Claremont Overlook DOE & MOA

January 2010





HO-798

Claremont  
Elkridge  
Howard County MD

L Wingate 9/2009  
MD SHPO

Front lawn in front of main house  
looking north

1/34



Claremont  
Edkridge  
Howard County MD

L Wingate 9/2009  
MD SHPO

East (front) facade overlooking front lawn

2/34



40-798

Claremont  
Elkridge  
Howard County MD

L Wingate 9/2009  
MD SHPO

NE corner of main house

3/34



HO-798

Claremont  
Elkridge  
Howard County MD

LWingate 9/2009  
MD SHPP

NE corner

4/34



HO-798

Claremont

Elkridge

Howard County MD

L Wingate 9/2009

MD SHPO

SE corner

5/34



HC-798

Claremont  
Elkridge  
Howard County MD

L Wingate 9/2009

MD SHPO  
SW corner

6/34



Claremont  
Elkridge  
Howard County MD

L Wingate 9/2009  
MD SAPO  
NW corner

HO-798

7/34



Claremont

Elkridge

Howard County MD

L Wingate 9/2009

MD SHPO

Front Door

HC-798

8/34



EPSON

HC-798

EPSON

EPSON

Claremont  
Elkridge  
Howard County MD

L Wingate 9/2009  
MD SHPO

Inside front door

EPSON

9/34

EPSON



Claremont  
Elkridge  
Howard County MD  
L Wingate 9/2009  
MD SHPO

Dining Rm, looking north

HO-798

10/34



THE HEAVY IRON WORKS  
CO.  
FURNACES  
CINCINNATI, O.

EPSON

HO-798

EPSON

Claremont

Edkrige

Howard County MD

L Wingate 9/2009

MD SHPO

Damper @ baseboard in Dining Rm

SW corner 11/11

EPSON

EPSON

EPSON

EPSON



HO-798  
EPSON

EPSON

Claremont  
Elkridge  
Howard County MD

EPSON

EPSON

L Wingate 9/2009  
MD SHPO

Front Parlour looking west

12/34



HC-798

Claremont  
Elkridge

Howard County MD

L Wingate 9/2009

MD SHPO

Back Parlour, looking NE

13/34



Claremont  
Elkridge  
Howard County MD  
L Wingate 9/2009  
MD SHPO

Basement - brick floor

14/34

HC-798



HO-798

Claremont  
Elkridge  
Howard County  
L Wingate 9/2009  
MD SHPO

Front Stair & Hall

15/34



HO-798

Claremont

Elkridge

Howard County MD

L Wingate 9/2009

MD SAPO

Base of front stair

No/34



HO-798

EPSON

Claremont  
Elkridge

Howard County MD

L Wingate 9/2009

MD SHPO

Front Hall

17/34

EPSON

EPSON

EPSON



MC-798

Claremont  
Elkridge  
Howard County MD

L Wingate 9/2009  
MD NSHPD

Board found in new post

18/340



Claremont  
Elkridge  
Howard County

L Wingate 9/2009

MD SHFC

Staircase landing btwn 2<sup>nd</sup> & 3<sup>rd</sup> fl  
looking east

19/34

The inscription was found on a board inside the newel post:

*"This house owned by Dr. J. Hall of Baltimore.*

*Built by John Lee Selby, Carroll Co. and John S. Miller, Balt. Co.*

*Painted by John Bowerson, Balt. Co.*

*Columns [on Anchors?] executed by John H. Pugsley, Baltimore.*

*Architect R. Snowden Andrews, Baltimore. Aug. 1858, finished Oct. 1858."*



HO-798

Claremont  
Elkridge  
Howard Co

L Wingate 9/2009  
MD SHPO  
SE BR looking SW

20/34



EPSON

HD-798

Claremont  
Elkridge  
Howard County  
L Wingate 9/2009  
MD SHPO

staircase stringer detail  
and door frame casing

EPSON 21/34



HO-798

Claremont  
Elkridge  
Howard Co  
L Wingate  
MD SHPO

9/2009

Back stair, 2<sup>nd</sup> fl landing

22/34



Clatsmont  
Elkridge  
Howard Co  
L Wingate  
M D SHPO

9/2009

3rd floor servants quarters

23/34

EPSON HO-798

EPSON



EPSON

HO-798

Claremont  
Elkridge  
Howard Co  
L Wingate 9/2009  
MD SHPO

Main staircase - 2nd floor rear landing  
window overlooking summer kitchen

24/34



HC-798

Clavement Summer Station

Elkridge

Howard Co

L Wingate 9/2009

MD SHPO

West elevation

25/34



HC-798

Claremont summer kitchen  
NE corner

Elkridge

Howard Co

L Wingate 9/2009

26/34



HC-798

Claremont summer kitchen

Elkridge

Howard Can

L Wingate 9/2009

NE corner

27/34



HC-798

Claremont summer kitchen  
Elkridge  
Howard Co.  
L Wingate 9/2009

East elevation

29/34



HC-798

Claremont summer kitchen

Eikridge

Howard Cr

170 S-FE

L Wingate 9/2009

SE corner

29-34



HC-798

Claremont s.w. corner

Elkridge

Howard Co

MD SHIP

L Wingate 9/09

South side

30/34



EPSON

H0-798

Claremont summer kitchen

Elkridge

Howard Co

M.D. SHP

L Wingate 9/09

Looking north through doorway

31/34



HC-798

Claremont summer kitchen  
Elkridge  
Howard Co  
MD SHP.  
L Wingate

Looking NE in 2nd room

32/34



HO-798

Claremont summer kitchen

Elbridge

Howard Co.

MD SHPO

L Wingate 7/09

Second Room - looking south

33/34



HO-798

Claremont

Elkridge

Howard Co

MD SHPO

L Wingate 9/09

Looking west toward entry door

34/34