

HO-573

## The Judge's Bench (Buzz Suter Building)

### **Architectural Survey File**

This is the architectural survey file for this MIHP record. The survey file is organized reverse-chronological (that is, with the latest material on top). It contains all MIHP inventory forms, National Register nomination forms, determinations of eligibility (DOE) forms, and accompanying documentation such as photographs and maps.

Users should be aware that additional undigitized material about this property may be found in on-site architectural reports, copies of HABS/HAER or other documentation, drawings, and the “vertical files” at the MHT Library in Crownsville. The vertical files may include newspaper clippings, field notes, draft versions of forms and architectural reports, photographs, maps, and drawings. Researchers who need a thorough understanding of this property should plan to visit the MHT Library as part of their research project; look at the MHT web site ([mht.maryland.gov](http://mht.maryland.gov)) for details about how to make an appointment.

All material is property of the Maryland Historical Trust.

***Last Updated: 02-07-2013***

HO-573  
The Judge's Bench  
(Buzz Suter Building)  
8385 Main Street  
Ellicott City

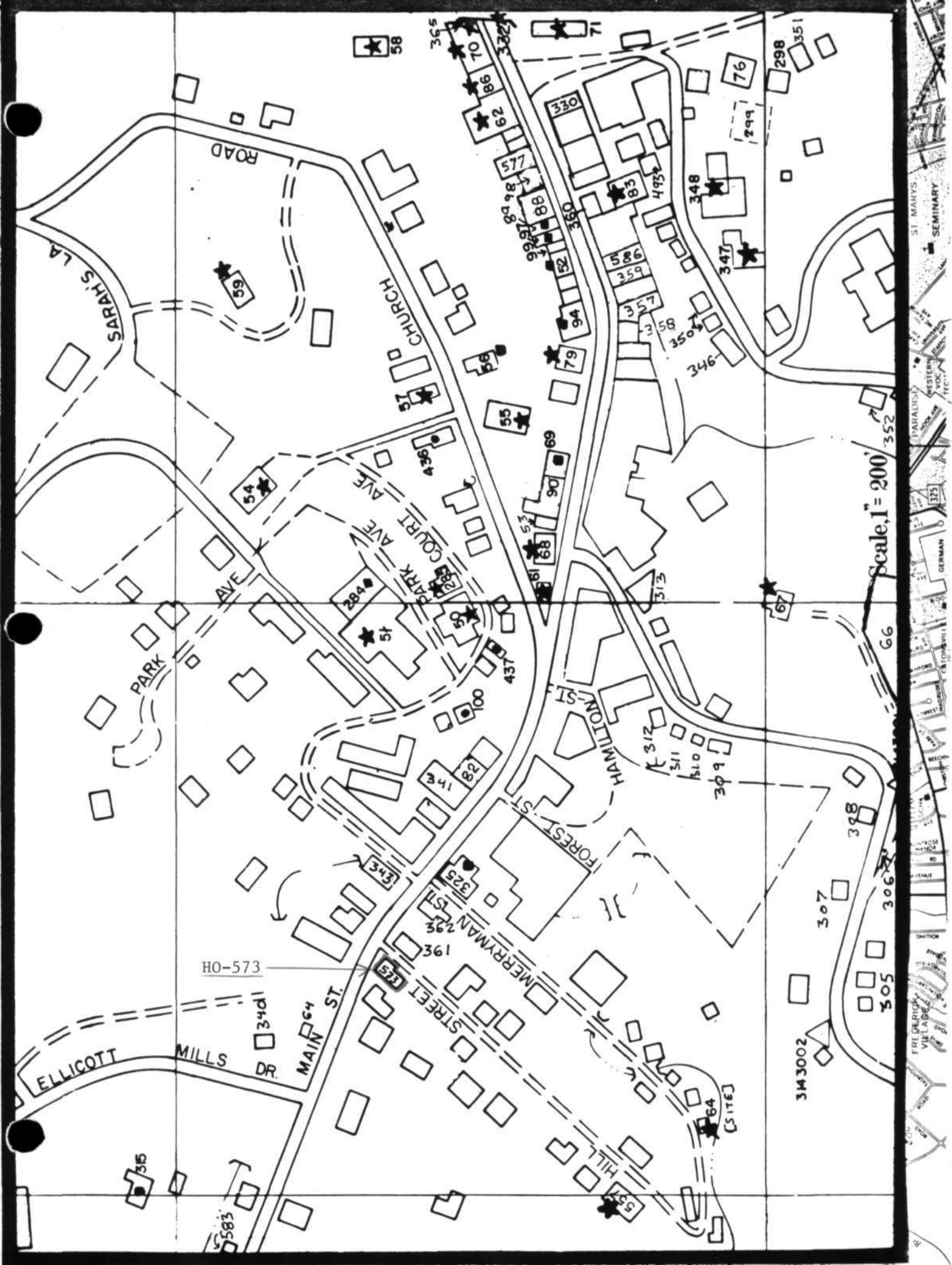
Facing north on the south side of Main Street in Ellicott City, the Judge's Bench is a 3-story 4-bay stone and frame commercial building. The first floor is stone, and the two floors above are frame. The first floor main facade has a central door flanked by plate glass windows, the second floor has four 6/6 sash windows, and the third floor has four small 6-light casement windows.

The west facade is covered with a brick (first floor) and frame (second floor) gable-roofed addition, with the gable running perpendicular to the rest of the building.

The south (rear) facade of the building is covered by a frame wing. The west facade of this wing has two 2/2 sash windows, and an exterior brick chimney on the southwest corner. The south facade has a 6/6 sash window above a door in the west bay.

The east facade has small boarded-up openings in the stone ground floor, which becomes a basement toward the rear of the building. The second floor has one 6/6 sash window in the south bay of the main block, and one 6-light casement window above it. The wing has one 4/4 sash window in the north bay, and one 6/6 sash window in the south bay. This gable end of the main block has an interior brick chimney.

The owner of the building claims that it is haunted.



HO-573

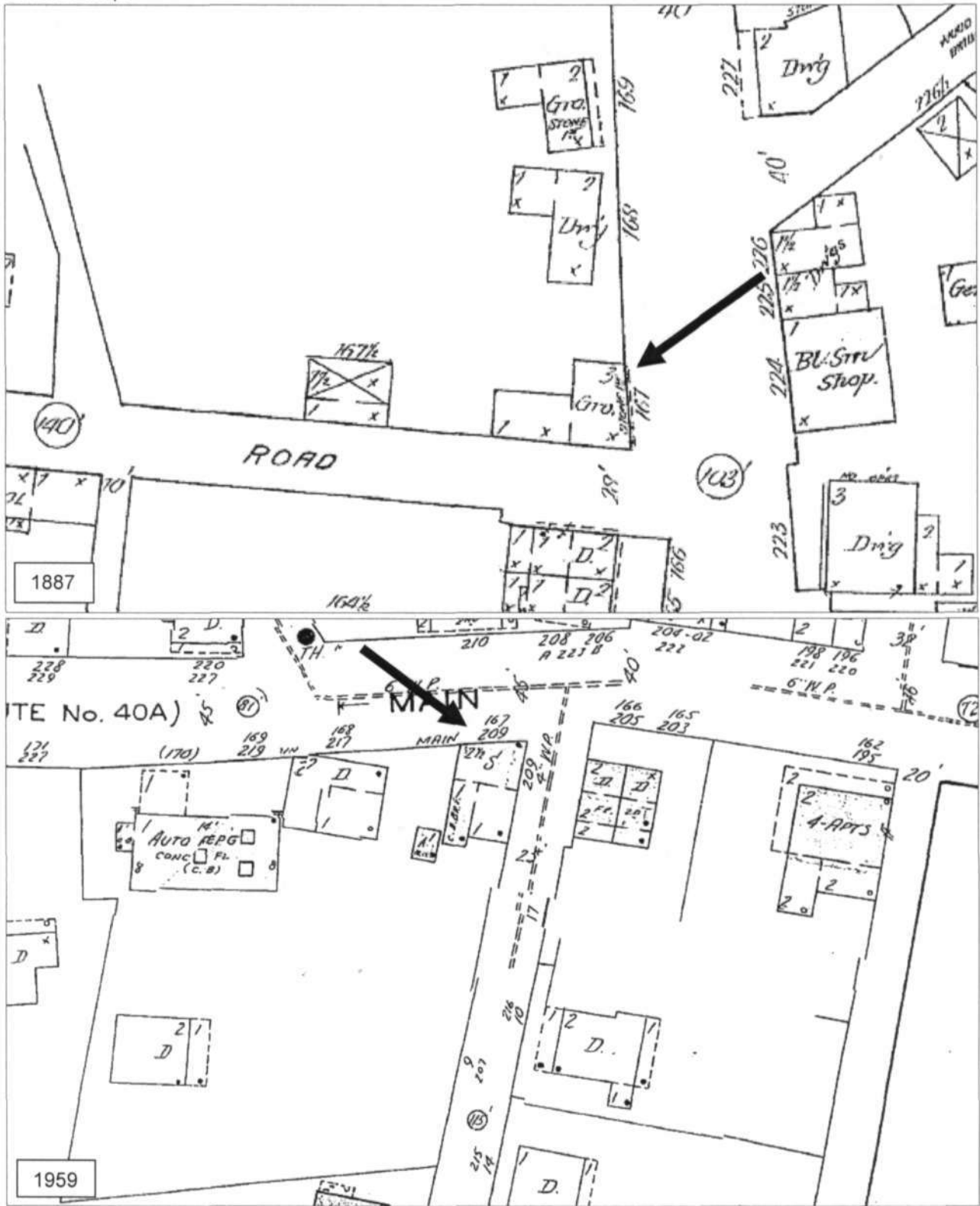
The Judge's Bench (Buzz Suter Building)  
8385 Main Street (MD 144), Ellicott City  
Martenet's Map of Howard County Maryland, 1860



G.M. Hopkins Atlas of Howard County, Maryland, 1878



HO-573  
The Judge's Bench (Buzz Suter Building)  
8385 Main Street (MD 144), Ellicott City  
Sanborn Maps

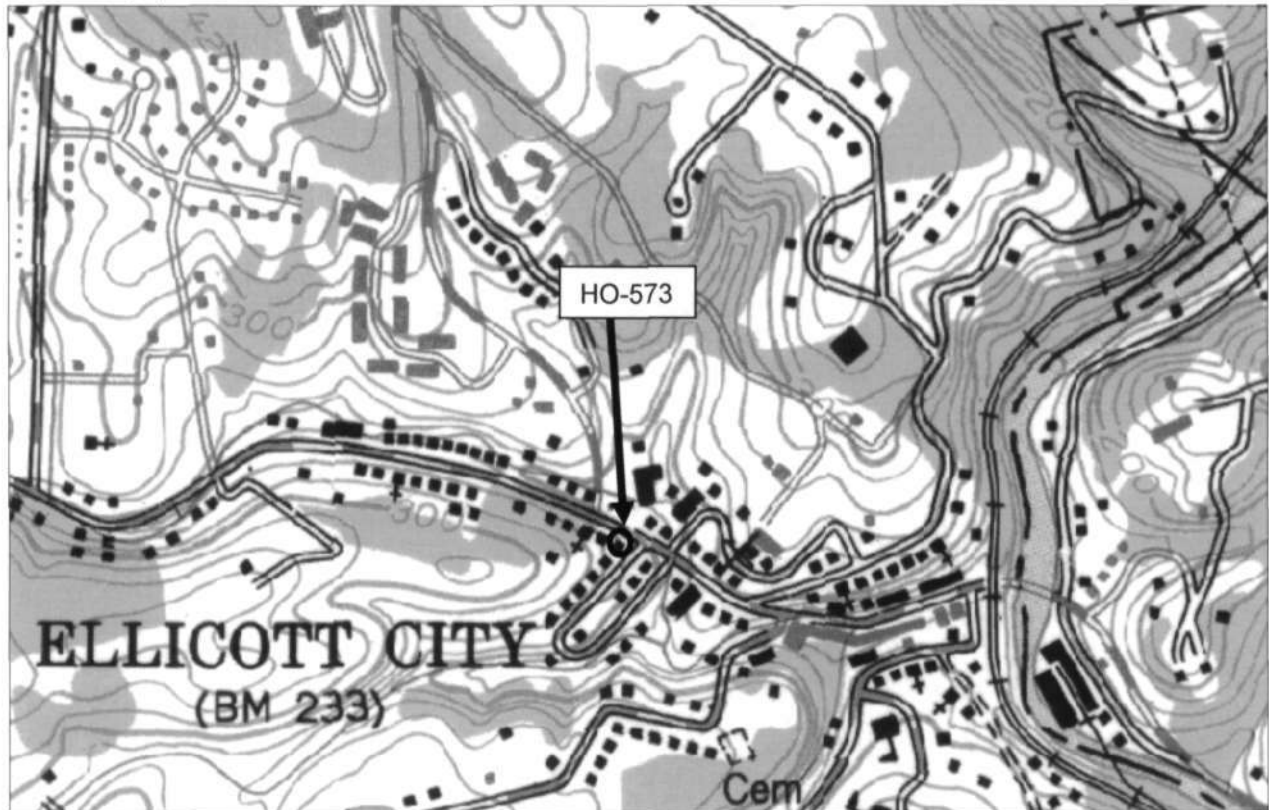


HO-573

The Judge's Bench (Buzz Suter Building)

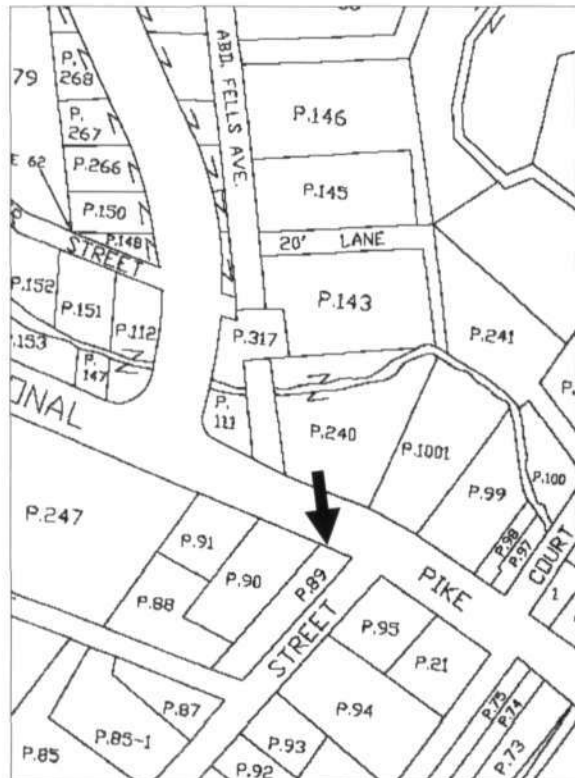
8385 Main Street (MD 144), Ellicott City

Ellicott City quad 1953, Photorevised 1966 and 1974



Tax Map 25A, Parcel 89

National Web Map Service 6" Orthophoto Map, c. 2010



HO-573  
The Judge's Bench (Buzz Suter Building)  
8385 Main Street (MD 144), Ellicott City  
Photo by Jennifer K. Cosham, 11/28/2012  
North elevation

