

CH-817

7855 Crain Highway

Architectural Survey File

This is the architectural survey file for this MIHP record. The survey file is organized reverse-chronological (that is, with the latest material on top). It contains all MIHP inventory forms, National Register nomination forms, determinations of eligibility (DOE) forms, and accompanying documentation such as photographs and maps.

Users should be aware that additional undigitized material about this property may be found in on-site architectural reports, copies of HABS/HAER or other documentation, drawings, and the “vertical files” at the MHT Library in Crownsville. The vertical files may include newspaper clippings, field notes, draft versions of forms and architectural reports, photographs, maps, and drawings. Researchers who need a thorough understanding of this property should plan to visit the MHT Library as part of their research project; look at the MHT web site (mht.maryland.gov) for details about how to make an appointment.

All material is property of the Maryland Historical Trust.

Last Updated: 10-11-2011

**MARYLAND HISTORICAL TRUST
NR-ELIGIBILITY REVIEW FORM**

Property Name: _____ Inventory Number: ~~820064~~ CH-817

Address: 7855 Crain Highway, Charles County - in the vicinity of La Plata

Owner: Jones, Mary H D and Larry A

Tax Parcel Number: 95 Tax Map Number: 44

Project MD 301 Agency State Highway Administration (SHA)

Site visit by SHA Staff: no yes Name: _____ Date: _____

Eligibility recommended Eligibility **not** recommended

Criteria A B C D Considerations: A B C D E F G None

Is property located within a historic district?: no yes Name of District: _____

Is district listed?: no yes

Documentation on the property/district is presented in: Project Review and Compliance Files

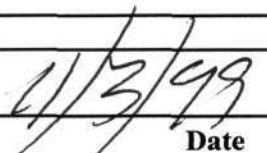
Description of Property and Eligibility Determination *(Use continuation sheet if necessary and attach map and photo)*

7855 Crain Highway is a one-story, wood frame dwelling with a side gable roof. The house is three-bays wide with a wing set back from the façade (east) on the south elevation. The wing is one story in height and has a side gable roof. The entry is located within a front gable projecting bay, which is centered on the primary elevation. An exterior brick chimney was added to the façade.

Towards the end of the first quarter of the 20th century, road improvements and developments contributed to the suburbanization of Charles County. In particular, the Robert Crain Highway, later expanded as part of U.S. 301, attracted new development to older communities along its corridor. Crain Highway brought commercial development on La Plata's west side and contributed to the Charles County seat's overall growth in the 1920s and 1930s.

World War II and the increasing dependence upon motor vehicles played a very important role in La Plata's community development. Charles County continued its relative isolation from large-scale residential and commercial development until after Crain Highway was dualized and designated U.S. 301 in the 1960s. Earlier trends in travel-

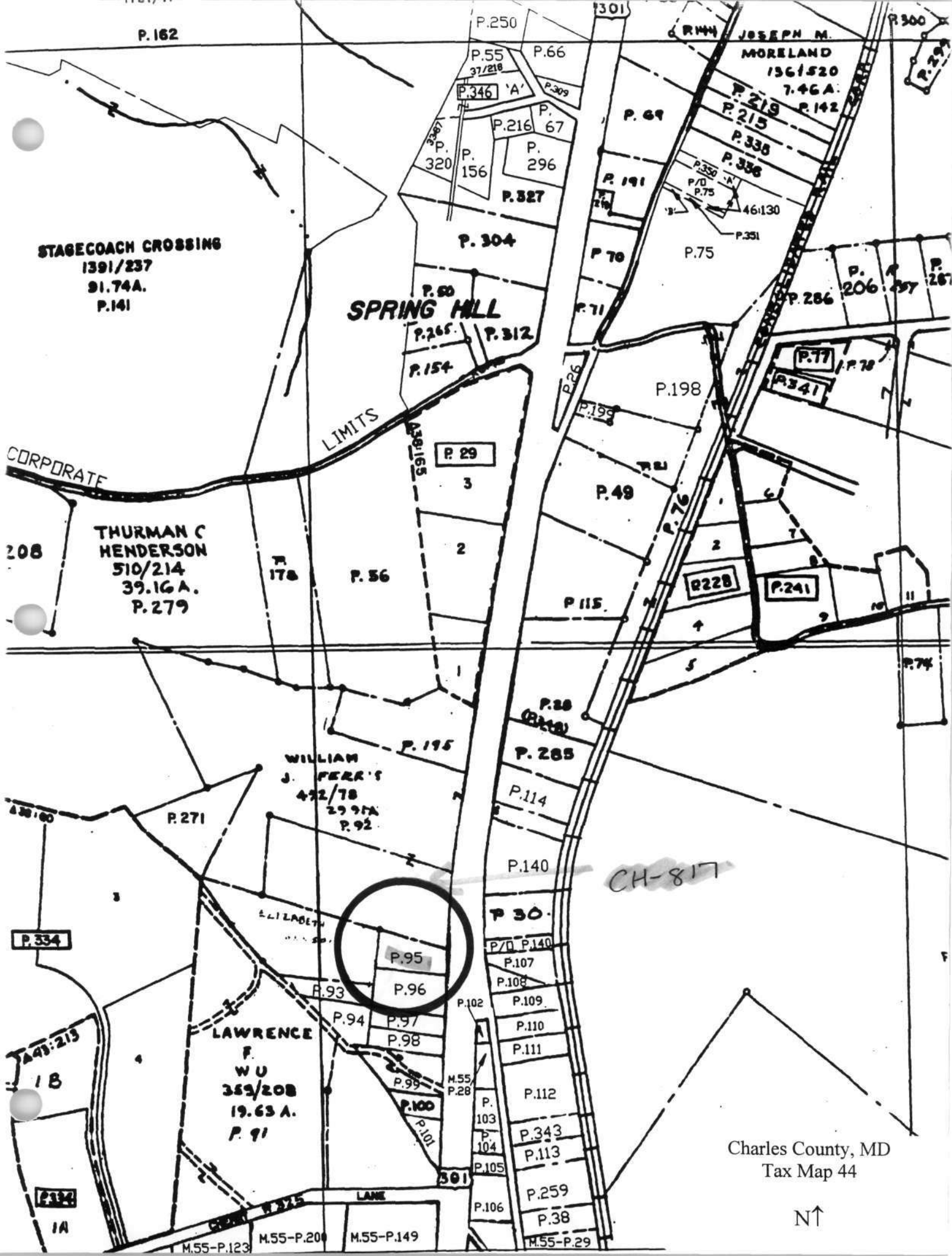
Prepared by EHT Tracerics, Inc.

MARYLAND HISTORICAL TRUST REVIEW	
Eligibility recommended	Eligibility not recommended <input checked="" type="checkbox"/>
Criteria: <input type="checkbox"/> A <input type="checkbox"/> B <input checked="" type="checkbox"/> C <input type="checkbox"/> D	Consideration <input type="checkbox"/> A <input type="checkbox"/> B <input type="checkbox"/> C <input type="checkbox"/> D <input checked="" type="checkbox"/> E <input type="checkbox"/> F <input type="checkbox"/> G <input type="checkbox"/> None
 _____ Reviewer, Office of Preservation Services	 _____ Date
_____ Reviewer, NR Program	_____ Date

Page 2

related services and entertainment along the Crain Highway grew somewhat when the highway was extended across the Potomac River to Virginia through southern Charles County and over the new Harry W. Nice Bridge in 1940, thus completing a route from New York to Florida.

Built circa 1920, this vernacular house is not eligible for the National Register. While it is typical of the modest residential development along U.S. 301, this resource lacks significance related to events, persons, or architecture. Criterion D, information potential, was not assessed for this study.



STAGECOACH CROSSING
1391/237
91.74A.
P.141

SPRING HILL

THURMAN C
HENDERSON
510/214
39.16A.
P.279

WILLIAM
J. FERR'S
472/78
29.95A
P.92

LAWRENCE
F. WU
359/208
19.63 A.
P.91

JOSEPH M.
MORELAND
1561520
7.46A.
P.142

CORPORATE

LIMITS

CH-817

Charles County, MD
Tax Map 44



P.334

P.334

P.334

1A

P.95

P.96

P.97

P.98

P.99

P.100

P.101

P.102

P.103

P.104

P.105

P.106

P.107

P.108

P.109

P.110

P.111

P.112

P.113

P.114

P.115

P.116

P.117

P.118

P.119

P.120

P.121

P.122

P.123

P.124

P.125

P.126

P.127

P.128

P.129

P.130

P.131

P.132

P.133

P.134

P.135

P.136

P.137

P.138

P.139

P.140

P.141

P.142

P.143

P.144

P.145

P.146

P.147

P.148

P.149

P.150

P.151

P.152

P.153

P.154

P.155

P.156

P.157

P.158

P.159

P.160

P.161

P.162

P.163

P.164

P.165

P.166

P.167

P.168

P.169

P.170

P.171

P.172

P.173

P.174

P.175

P.176

P.177

P.178

P.179

P.180

P.181

P.182

P.183

P.184

P.185

P.186

P.187

P.188

P.189

P.190

P.191

P.192

P.193

P.194

P.195

P.196

P.197

P.198

P.199

P.200

P.201

P.202

P.203

P.204

P.205

P.206

P.207

P.208

P.209

P.210

P.211

P.212

P.213

P.214

P.215

P.216

P.217

P.218

P.219

P.220

P.221

P.222

P.223

P.224

P.225

P.226

P.227

P.228

P.229

P.230

P.231

P.232

P.233

P.234

P.235

P.236

P.237

P.238

P.239

P.240

P.241

P.242

P.243

P.244

P.245

P.246

P.247

P.248

P.249

P.250

P.251

P.252

P.253

P.254

P.255

P.256

P.257

P.258

P.259

P.260

P.261

P.262

P.263

P.264

P.265

P.266

P.267

P.268

P.269

P.270

P.271

P.272

P.273

P.274

P.275

P.276

P.277

P.278

P.279

P.280

P.281

P.282

P.283

P.284

P.285

P.286

P.287

P.288

P.289

P.290

P.291

P.292

P.293

P.294

P.295

P.296

P.297

P.298

P.299

P.300

P.301

P.302

P.303

P.304

P.305

P.306

P.307

P.308

P.309

P.310

P.311

P.312

P.313

P.314

P.315

P.316

P.317

P.318

P.319

P.320

P.321

P.322

P.323

P.324

P.325

P.326

P.327

P.328

P.329

P.330

P.331

P.332

P.333

P.334

P.335

P.336

P.337

P.338

P.339

P.340

P.341

P.342

P.343

P.344

P.345

P.346

P.347

P.348

P.349

P.350

P.351

P.352

P.353

P.354

P.355

P.356

P.357

P.358

P.359

P.360

P.361

P.362

P.363

P.364

P.365

P.366

P.367

P.368

P.369

P.370

P.371

P.372

P.373

P.374

P.375

P.376

P.377

P.378

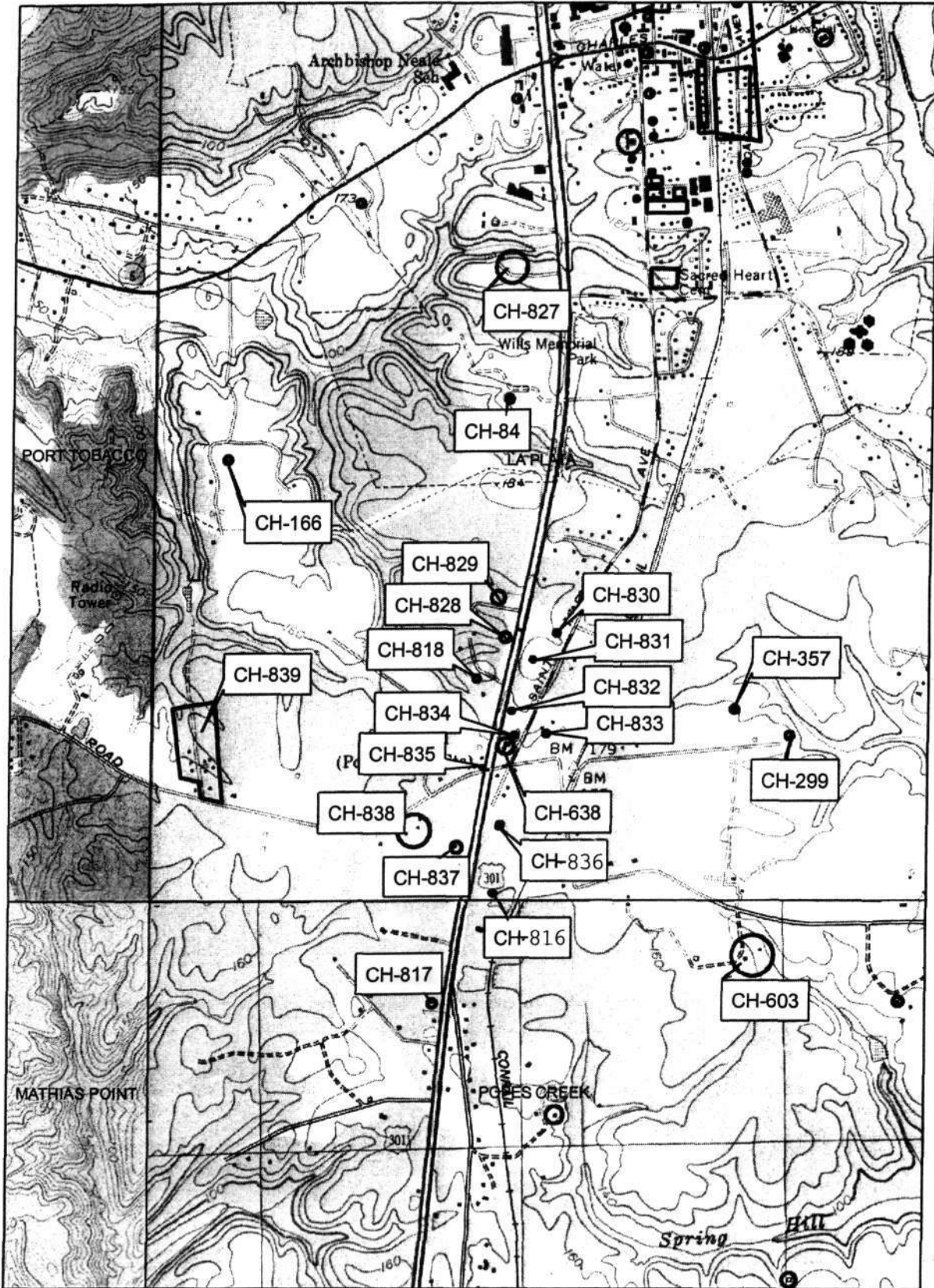
P.379

P.380

P.381

P.382

P





~~CH-817~~ CH-817

7855 Crain Highway
Charles County, MD

Traceries

June 1999

MD SHPO

View looking west
1 of 1